

APP CRS	Rwy Idg	5070
081°	TDZE	913
	Apt Elev	934

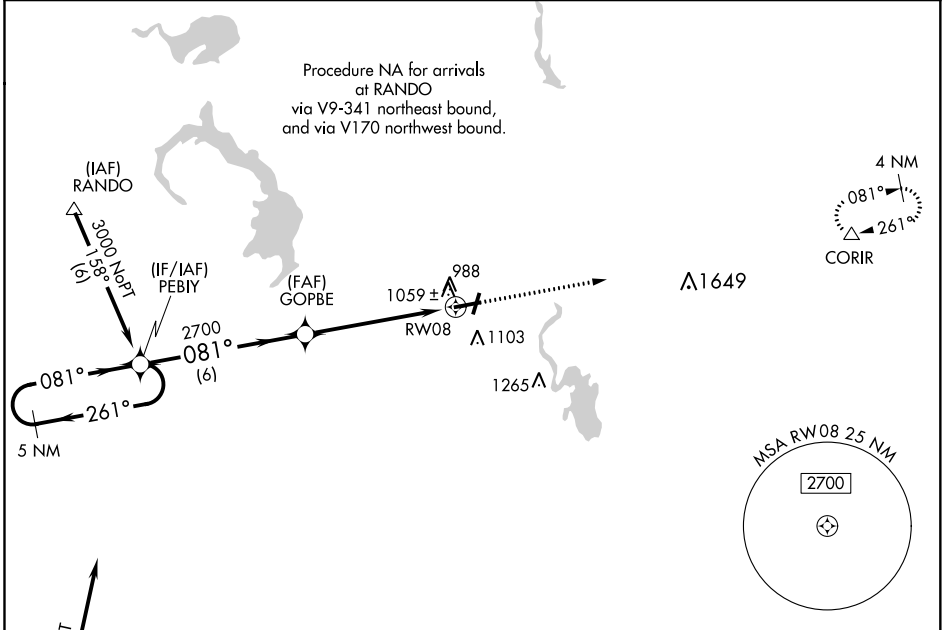
RNAV (GPS) RWY 8

DODGE COUNTY (UNU)

▼ DME/DME RNP-0.3 NA. When local altimeter setting not received, use Dane County Rgnl-Truax Fld altimeter setting and increase all MDAs 100 feet, and increase Circling Cat C visibility ¼ SM. VDP NA when using Dane County Rgnl-Truax Fld altimeter setting.

▲ MISSED APPROACH: Climb to 3000 direct CORIR and hold.

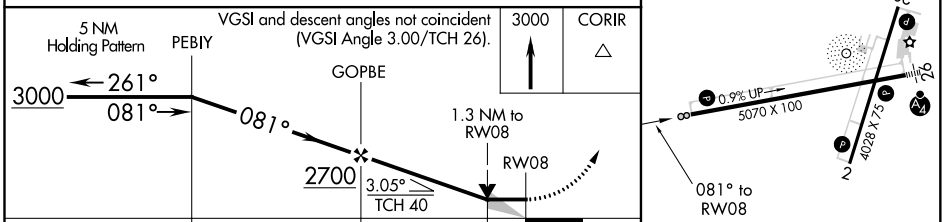
AWOS-3 120.825	MADISON APP CON 119.15 343.7	UNICOM 122.7 (CTAF) 0
--------------------------	--	---------------------------------



EC-3, 16 JUN 2022 to 14 JUL 2022

EC-3, 16 JUN 2022 to 14 JUL 2022

ELEV 934	TDZE 913
----------	----------



CATEGORY	A	B	C	D
LNVA MDA	1320-1	407 (400-1)	1320-1¼ 407 (400-1¼)	NA
C CIRCLING	1440-1	506 (600-1)	1440-1½ 506 (600-1½)	NA

REIL Rwy 2, 8, and 20
 MIRL Rwy 8-26 and 2-20