

APP CRS	Rwy Idg	4440
146°	TDZE	721
	Apt Elev	742

RNAV (GPS) RWY 15

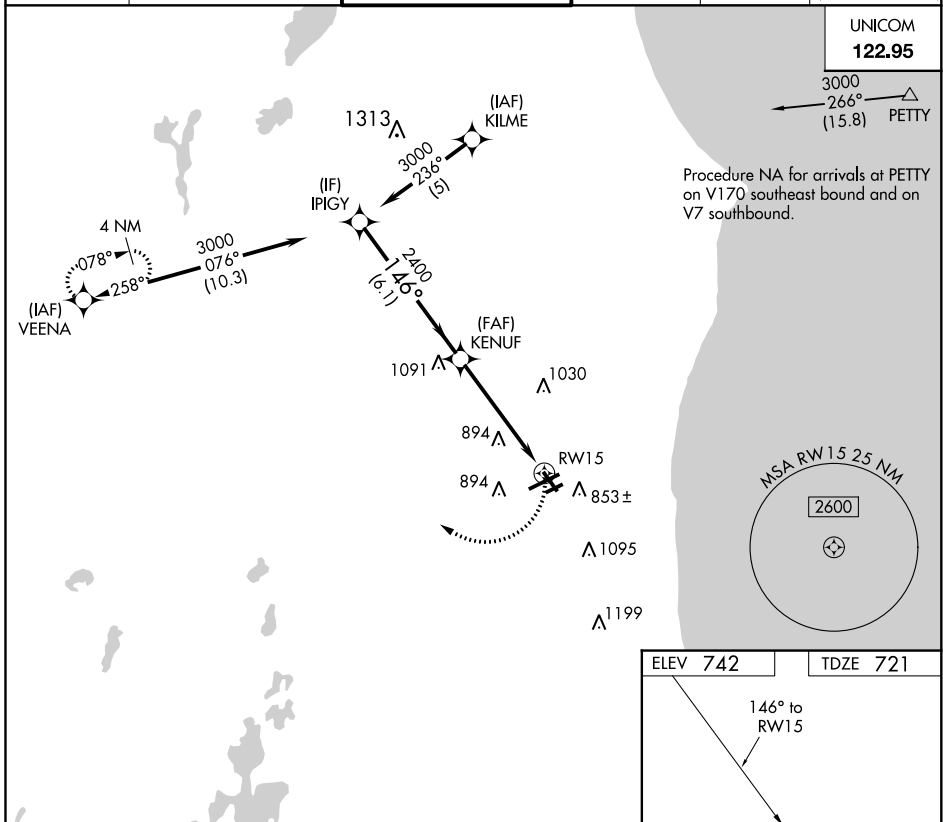
KENOSHA RGNL (ENW)

RNP APCH.

▼ Rwy 15 helicopter visibility reduction below 1 SM NA. Straight-In and **▲** Circling Rwy 15 NA at night, Circling Rwy 7R NA at night.

MISSED APPROACH:
Climbing right turn to 3000
direct VEENA and hold.

ATIS 127.175	MILWAUKEE APP CON 135.875 317.725	KENOSHA TOWER * 118.6 (CTAF) 0 353.6	GND CON 121.875	CLNC DEL 121.875	CLNC DEL 118.6 (When twr closed)
------------------------	---	--	---------------------------	----------------------------	---

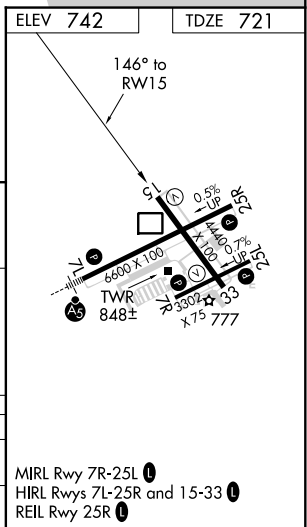
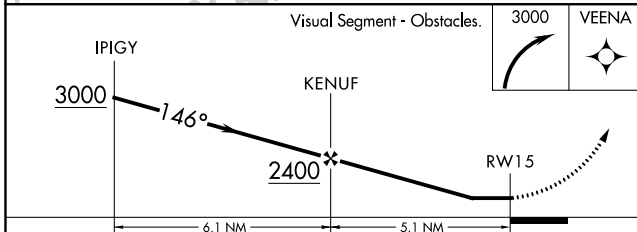


UNICOM
122.95

Procedure NA for arrivals at PETTY on V170 southeast bound and on V7 southbound.

EC-3, 16 JUN 2022 to 14 JUL 2022

EC-3, 16 JUN 2022 to 14 JUL 2022



CATEGORY	A	B	C	D
LNVA MDA	1200-1	479 (500-1)	1200-1 ³ / ₈ 479 (500-1 ³ / ₈)	1200-1 ¹ / ₂ 479 (500-1 ¹ / ₂)
CIRCLING	1200-1 458 (500-1)	1340-1 598 (600-1)	1400-1 ³ / ₄ 658 (700-1 ³ / ₄)	1440-2 ¹ / ₄ 698 (700-2 ¹ / ₄)

MIRL Rwy 7R-25L **0**
HIRL Rwy 7L-25R and 15-33 **0**
REIL Rwy 25R **0**