

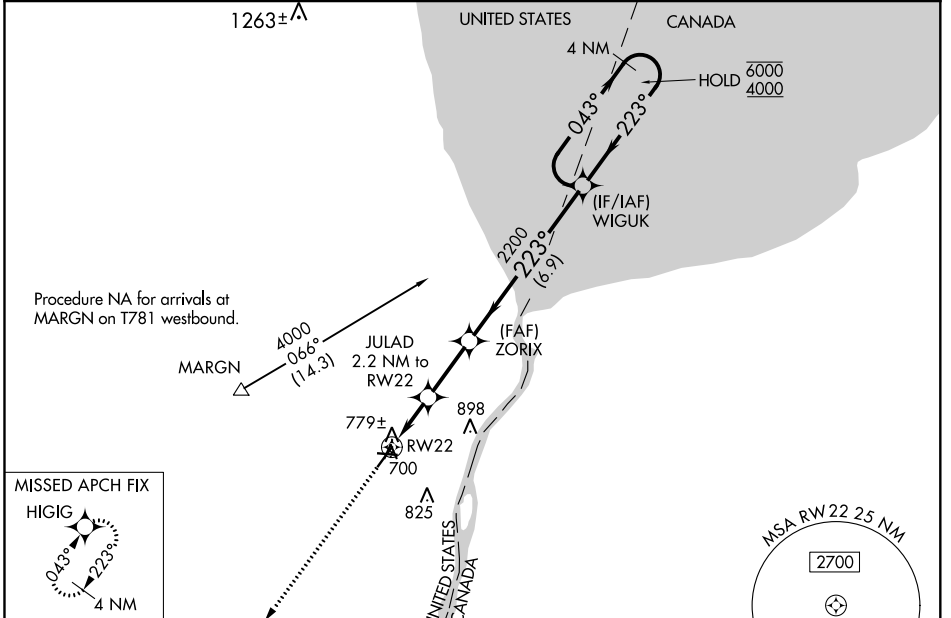
WAAS CH <b>97723</b> <b>W22A</b>	APP CRS <b>223°</b>	Rwy ldg <b>5104</b> TDZE <b>649</b> Apt Elev <b>650</b>
--	------------------------	---

# RNAV (GPS) RWY 22

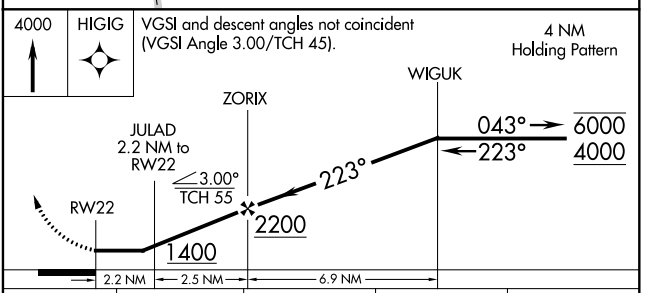
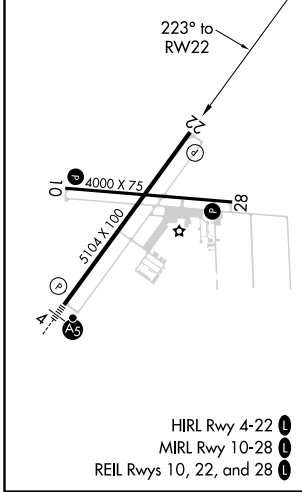
ST CLAIR COUNTY INTL (PHN)

RNP APCH.	MISSED APPROACH: Climb to 4000 direct HIGIG and hold, continue climb-in-hold to 4000.
<p><b>▽</b> Rwy 22 helicopter visibility reduction below 1 SM NA.</p> <p><b>▲</b> Straight-in Rwy 22 NA at night, Circling Rwy 10, 22, 28 NA at night.</p>	

AWOS-3 <b>118.375</b>	SELFRRIDGE APP CON ★ <b>119.6 391.9</b>	UNICOM <b>123.05 (CTAF) 0</b>
--------------------------	--	----------------------------------



ELEV 650	TDZE 649
----------	----------



CATEGORY	A	B	C	D
LP MDA	1020-1 371 (400-1)			
LNVA MDA	1040-1 391 (400-1)	1040-1 $\frac{1}{8}$ 391 (400-1 $\frac{1}{8}$ )		
<b>0</b> CIRCLING	1160-1 510 (600-1)	1260-1 $\frac{3}{4}$ 610 (700-1 $\frac{3}{4}$ )	1260-2 610 (700-2)	

EC-1, 16 JUN 2022 to 14 JUL 2022

EC-1, 16 JUN 2022 to 14 JUL 2022