

# NDB RWY 4

ST CLAIR COUNTY INTL (PHN)

LOM PH <b>332</b>	APP CRS <b>043°</b>	Rwy Idg <b>5104</b>
		TDZE <b>647</b>
		Apt Elev <b>650</b>

**▽** When local altimeter setting not received, use Troy altimeter setting and increase all MDA 100 feet, increase S-4 and Circling Cats C and D visibility ¼. For inoperative MALSRS, increase S-4 Cats C and D visibility to 1¾ mile. For inoperative MALSRS when using Troy altimeter setting, increase S-4 Cat D visibility to 1¾ mile. Night landing: Rwy 10, 22, 28 NA.

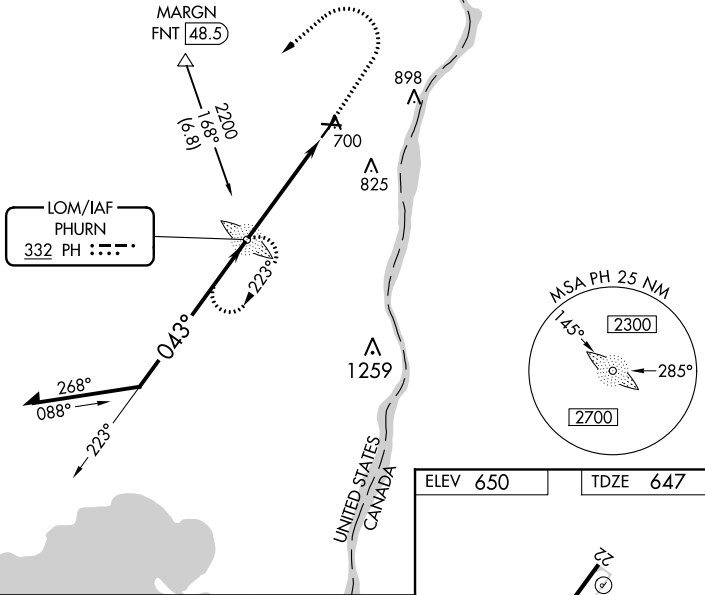


**MISSED APPROACH:**  
Climb to 2500 then climbing left turn to 4000 direct PHURN LOM and hold.

AWOS-3  
**118,375**

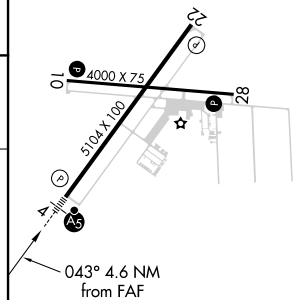
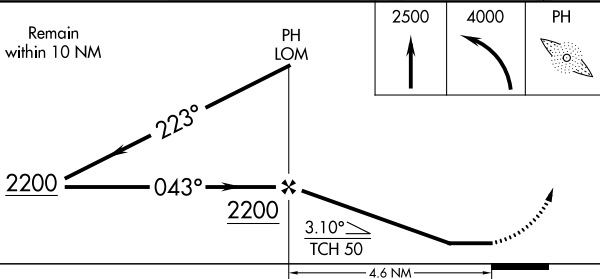
SELFRIDGE APP CON \*  
**119.6 391.9**

UNICOM  
**123.05 (CTAF) 0**



ELEV 650	TDZE 647
----------	----------

Remain within 10 NM



- HIRL Rwy 4-22 **0**
- MIRL Rwy 10-28 **0**
- REIL Rws 10, 22, and 28 **0**

FAF to MAP 4.6 NM

Knots	60	90	120	150	180
Min:Sec	4:36	3:04	2:18	1:50	1:32

CATEGORY	A	B	C	D
S-4	1160-¾ 513 (600-¾)		1160-1 513 (600-1)	
<b>C</b> CIRCLING	1160-1 510 (600-1)		1260-1¾ 610 (700-1¾)	1260-2 610 (700-2)

EC-1, 16 JUN 2022 to 14 JUL 2022

EC-1, 16 JUN 2022 to 14 JUL 2022