

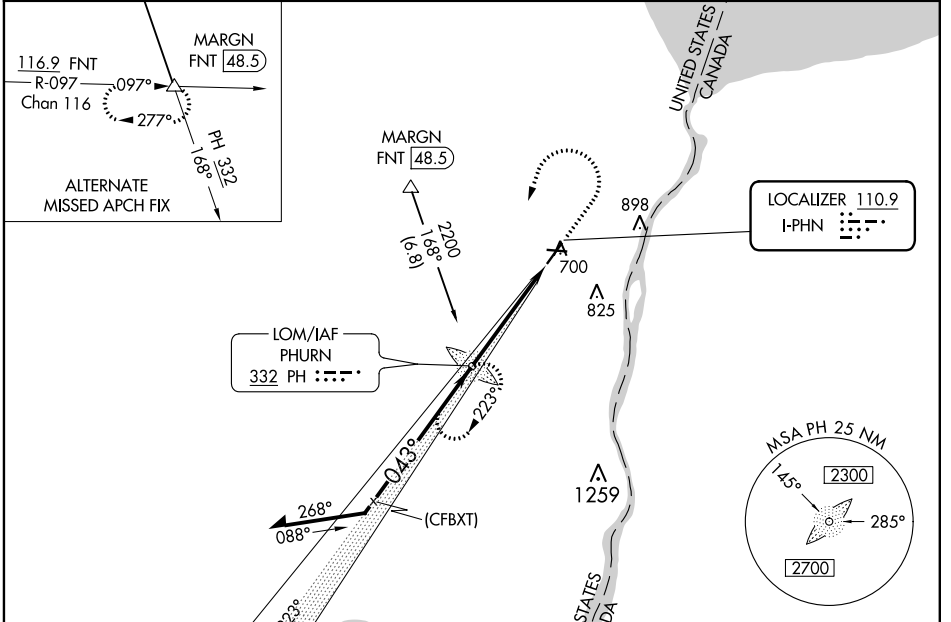
LOC I- <b>PHN</b> <b>110.9</b>	APP CRS <b>043°</b>	Rwy Idg TDZE Apt Elev	<b>5104</b> <b>647</b> <b>650</b>
-----------------------------------	------------------------	-----------------------------	---

# ILS or LOC RWY 4

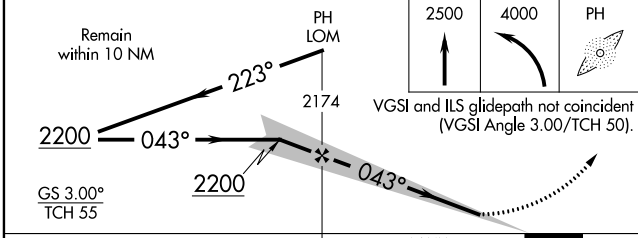
ST CLAIR COUNTY INTL (PHN)

<p><b>▽</b> ADF required. When local altimeter setting not received, use Troy altimeter setting and increase all DA 95 feet and all MDA 100 feet; increase S-LOC 4 Cats C and D and Circling Cats C and D visibility ¼ mile. For inop MALSR when using Troy altimeter setting, increase S-ILS 4 all CATS visibility to ¾ mile. Night landing: Rwy 10, 22, 28 NA.</p>	<p><b>MALSR</b></p>	<p><b>MISSED APPROACH:</b> Climb to 2500 then climbing left turn to 4000 direct PHURN LOM and hold, continue climb-in-hold to 4000.</p>
--	---------------------	---

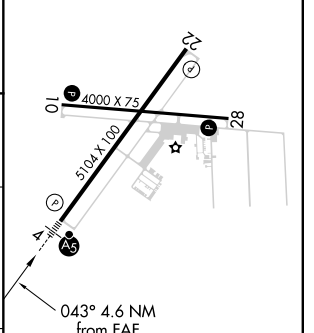
AWOS-3 <b>118.375</b>	SELFDRGE APP CON * <b>119.6 391.9</b>	UNICOM <b>123.05 (CTAF)</b>
--------------------------	--	--------------------------------



**ADF REQUIRED**



ELEV 650	TDZE 647
----------	----------



CATEGORY	A	B	C	D
S-ILS 4	847-½ 200 (200-½)			
S-LOC 4	1160-½ 453 (500-½)	1100-¾ 453 (500-¾)		
<b>C</b> CIRCLING	1160-1 510 (600-1)	1260-1¼ 610 (700-1¼)	1260-2 610 (700-2)	

FAF to MAP 4.6 NM					
Knots	60	90	120	150	180
Min:Sec	4:36	3:04	2:18	1:50	1:32

HIRL Rwy 4-22 **1**  
MIRL Rwy 10-28 **1**  
REIL Rws 10, 22, and 28 **1**

EC-1, 16 JUN 2022 to 14 JUL 2022

EC-1, 16 JUN 2022 to 14 JUL 2022