

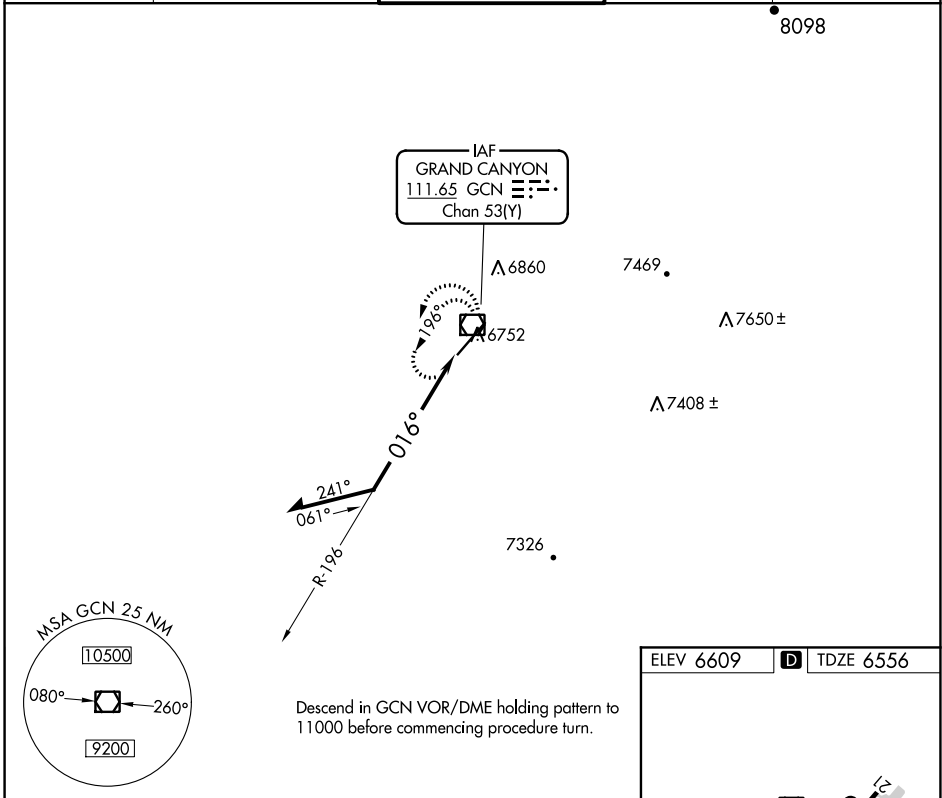
VOR/DME GCN 111.65 Chan 53(Y)	APP CRS 016°	Rwy Idg 8999 TDZE 6556 Apt Elev 6609
---	------------------------	---

VOR RWY 3

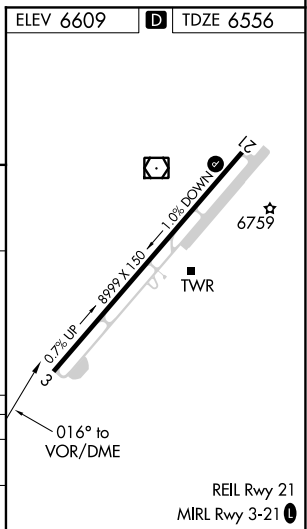
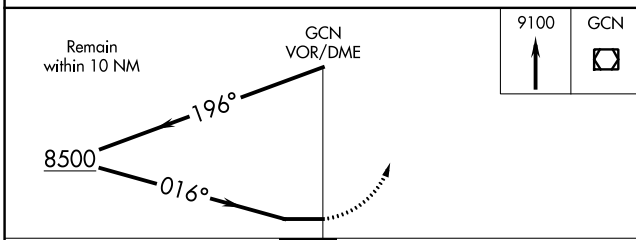
GRAND CANYON NTL PARK (GCN)

▽ Rwy 3 helicopter visibility reduction below ¾ SM NA. **MISSED APPROACH:** Climb to 9100 in GCN VOR/DME holding pattern.

ATIS 124.3	LOS ANGELES CENTER 124.85 319.2	CANYON TOWER* 119.0 (CTAF) 0	GND CON 121.9	UNICOM 122.95
----------------------	---	--	-------------------------	-------------------------



Descend in GCN VOR/DME holding pattern to 11000 before commencing procedure turn.



CATEGORY	A	B	C	D
S-3	7180-1	624 (600-1)	7180-1¾	624 (600-1¾)
C CIRCLING	7180-1 571 (600-1)	7200-1 591 (600-1)	7280-2 671 (700-2)	7620-3 1011 (1100-3)

SW-4, 16 JUN 2022 to 14 JUL 2022

SW-4, 16 JUN 2022 to 14 JUL 2022