

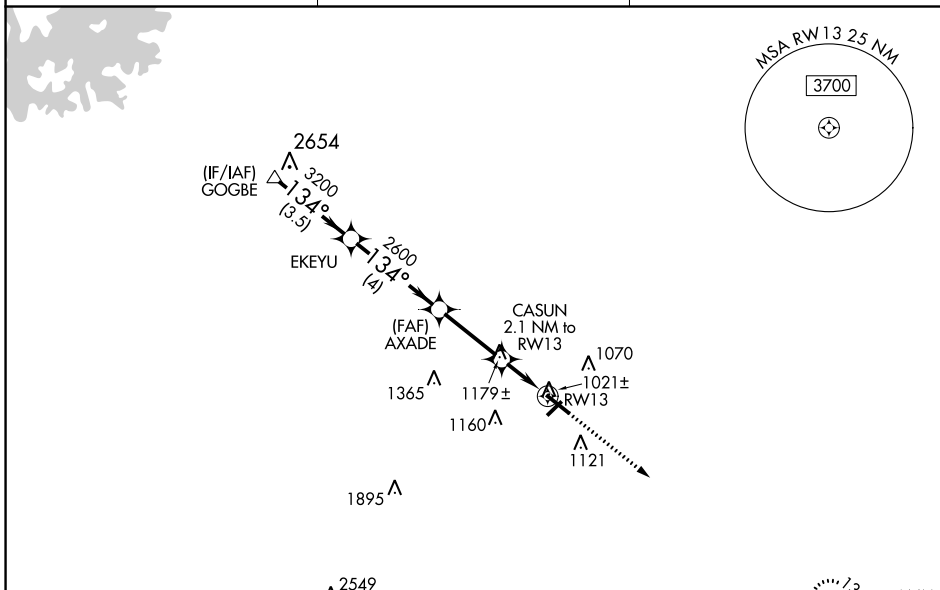
WAAS CH 90305 W13A	APP CRS 134°	Rwy Idg TDZE Apt Elev	5100 933 934
--	------------------------	-----------------------------	---

RNAV (GPS) RWY 13

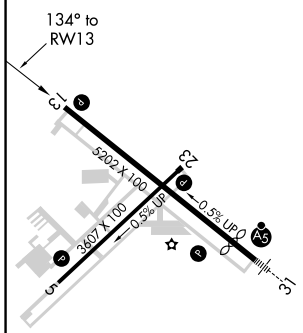
BARROW COUNTY (WDR)

RNP APCH.	MISSED APPROACH: Climb to 3000 direct CADEB and hold.
-----------	---

AWOS-3 118.575	ATLANTA APP CON ★ 132.475 291.1	UNICOM 123.0 (CTAF) 0
--------------------------	---	---------------------------------



ELEV 934	D	TDZE 933
----------	----------	----------



VGSi and RNAV glidepath not coincident (VGSi Angle 3.00/TCH 30).				3000	CADEB
3700	134°	EKEYU	AXADE	CASUN	RW13
GP 3.00°		3200	2600	2.1 NM to RW13	
TCH 60			*1660		
		3.5 NM	4 NM	2.9 NM	2.1 NM

CATEGORY	A	B	C	D
LPV DA		1207-1	274 (300-1)	
LNAV/VNAV DA		1422-1 $\frac{3}{8}$	489 (500-1 $\frac{3}{8}$)	
LNAV MDA		1300-1	367 (400-1)	
CIRCLING	1400-1	1580-1	1660-2	1660-2 $\frac{1}{4}$
	466 (500-1)	646 (700-1)	726 (800-2)	726 (800-2 $\frac{1}{4}$)

REIL Rwy 31
HIRL Rwy 13-31 0
MIRL Rwy 5-23 0

SE-4, 16 JUN 2022 to 14 JUL 2022

SE-4, 16 JUN 2022 to 14 JUL 2022