

NDB BMW	APP CRS	Rwy Idg	4600
<b>404</b>	<b>312°</b>	TDZE	<b>922</b>
		Apt Elev	<b>934</b>

# NDB RWY 31

BARROW COUNTY (WDR)

**⚠** For inop ALS, increase S-31 Cat A/B visibility to 1 SM. Circling Rwy 13, 23 NA at night. Rwy 31 helicopter visibility reduction below ¼ SM NA.

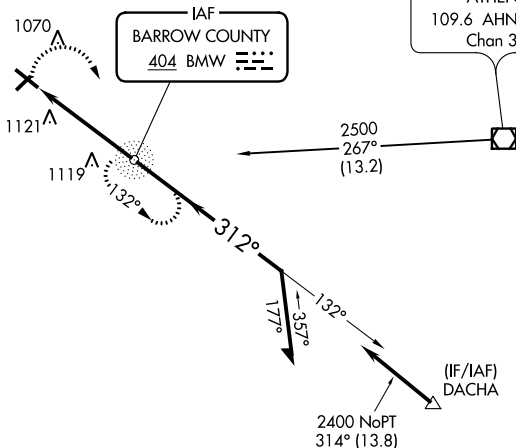
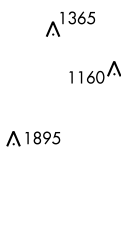
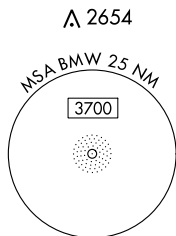


MISSED APPROACH: Climbing right turn to 2500 direct BMW NDB and hold.

AWOS-3  
**118.575**

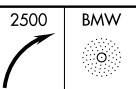
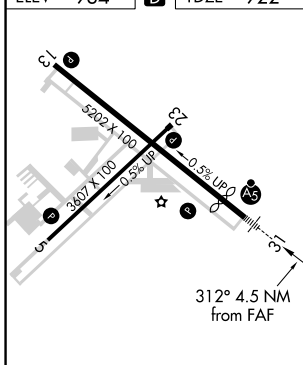
ATLANTA APP CON ★  
**132.475 291.1**

UNICOM  
**123.0 (CTAF) 0**

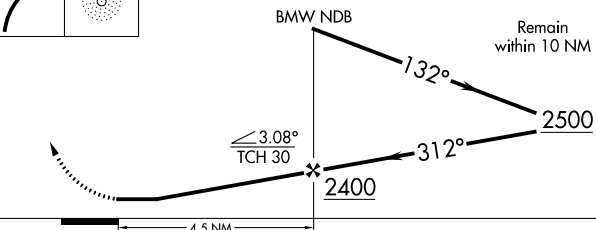


ATHENS  
109.6 AHN  
Chan 33

ELEV 934 **D** TDZE 922



VGSI and descent angles not coincident (VGSI Angle 3.00/TCH 45).



FAF to MAP 4.5 NM

Knots	60	90	120	150	180
Min:Sec	4:30	3:00	2:15	1:48	1:30

REIL Rwy 31  
HIRL Rwy 13-31  
MIRL Rwy 5-23

CATEGORY	A	B	C	D
S-31	1480-¾ 558 (600-¾)		1480-1⅛ 558 (600-1⅛)	
CIRCLING	1480-1 546 (600-1)	1580-1 646 (700-1)	1660-2 726 (800-2)	1660-2¼ 726 (800-2¼)

SE-4, 16 JUN 2022 to 14 JUL 2022

SE-4, 16 JUN 2022 to 14 JUL 2022