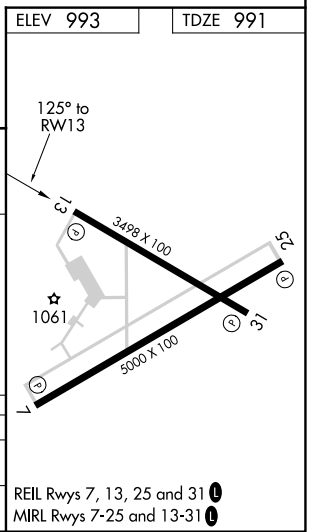
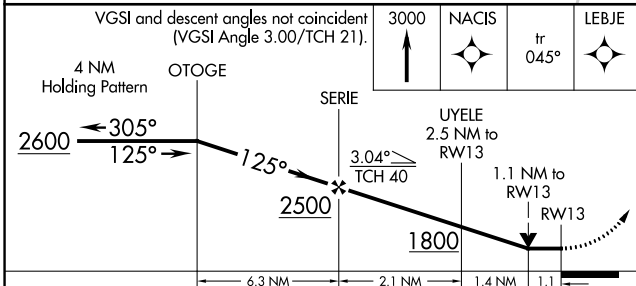
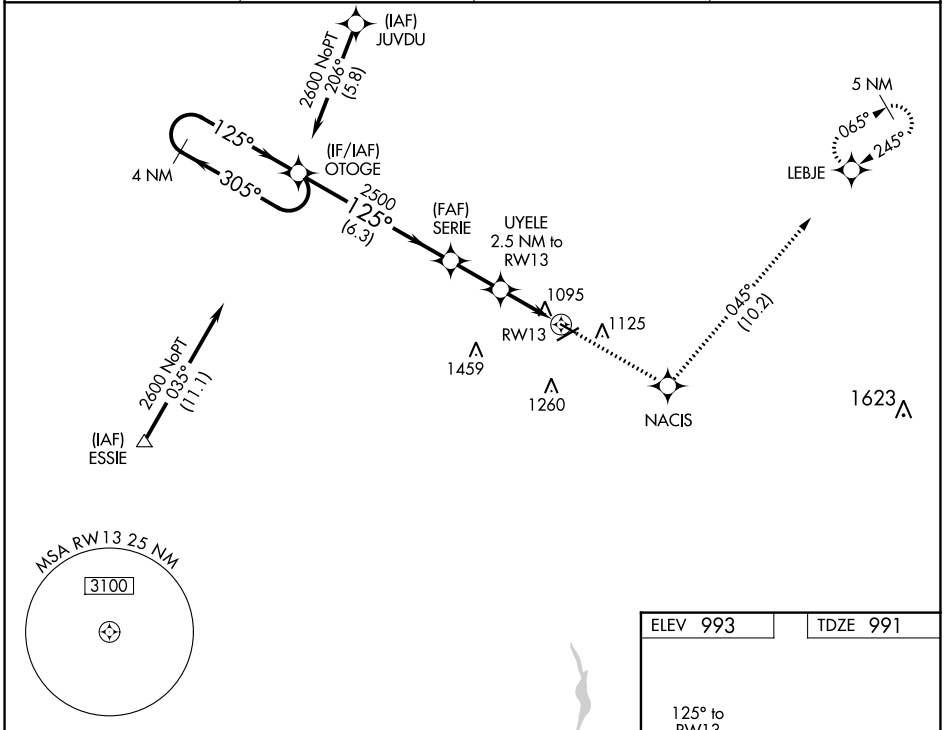


APP CRS	Rwy Idg	3498
125°	TDZE	991
	Apt Elev	993

RNAV (GPS) RWY 13

MARION MUNI (MNN)

RNP APCH.		MISSED APPROACH: Climb to 3000 direct NACIS and on track 045° to LEBJE and hold.	
<p>▼ Rwy 13 helicopter visibility reduction below ¾ SM NA. VDP NA when using Ohio State University altimeter setting. When local altimeter setting not received, use Ohio State University altimeter setting: increase all MDAs 100 feet and visibility Cat C/D ¾ SM.</p>			
ASOS	CLEVELAND APP CON *	CLNC DEL	UNICOM
119.975	124.2 360.65	126.8	122.8 (CTAF) 0



VGSi and descent angles not coincident (VGSi Angle 3.00/TCH 21).		3000	NACIS	tr 045°	LEBJE
4 NM Holding Pattern		OTOGE	SERIE	UYELE 2.5 NM to RWY13	1.1 NM to RWY13
2600		2500	1800	RWY13	
6.3 NM		2.1 NM	1.4 NM	1.1	
CATEGORY	A	B	C	D	
LNVA MDA	1360-1 369 (400-1)		1360-1¼ 369 (400-1¼)		
CIRCLING	1480-1 487 (500-1)	1500-1 507 (600-1)	1700-2 707 (800-2)	1820-2¾ 827 (900-2¾)	REIL Rwy 7, 13, 25 and 31 0 MIRL Rwy 7-25 and 13-31 0

EC-2, 16 JUN 2022 to 14 JUL 2022

EC-2, 16 JUN 2022 to 14 JUL 2022