

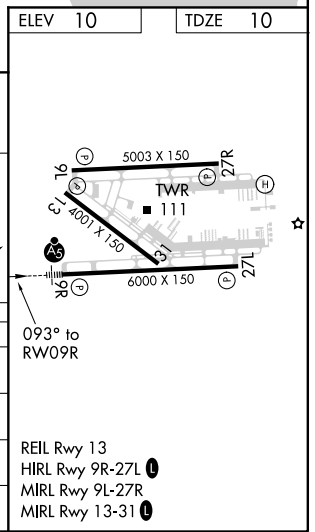
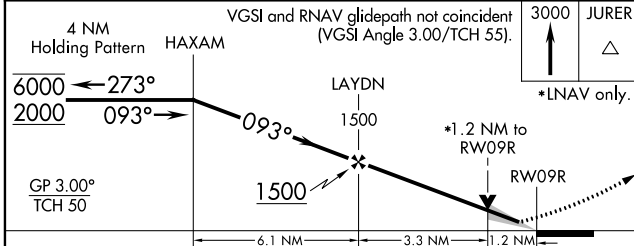
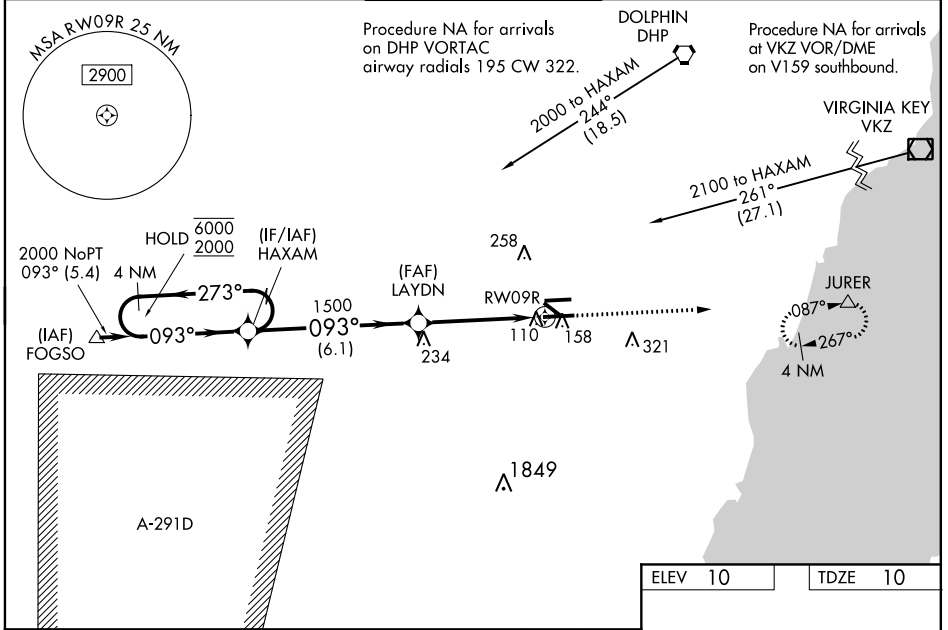
WAAS CH <b>72900</b> <b>W09A</b>	APP CRS <b>093°</b>	Rwy Idg TDZE Apt Elev	<b>6000</b> <b>10</b> <b>10</b>
--	------------------------	-----------------------------	---------------------------------------

# RNAV (GPS) RWY 9R

MIAMI EXEC (TMB)

RNP APCH.	MALS R	MISSED APPROACH: Climb to 3000 direct JURER and hold, continue climb-in-hold to 3000.
<p>▼ Circling Rwy 13, 31 NA at night. For uncompensated Baro-VNAV systems, LNAV/VNAV NA below -15°C or above 43°C. Baro-VNAV and VDP NA when using Miami Intl altimeter setting. When local altimeter setting not received, use Miami Intl altimeter setting and increase all DA by 27 feet and all MDA 40 feet, increase LNAV Cats C/D visibility ½ SM. For inop ALS when using Miami Intl altimeter setting, increase LNAV/VNAV all Cats visibility to ¾ SM, and LNAV Cat C/D visibility to 1½ SM.</p>		

ATIS <b>124.0</b>	MIAMI APP CON <b>125.5 354.1</b>	TAMIAMI TOWER ★ <b>118.9 (CTAF) 0</b>	GND CON <b>121.7</b>	CLNC DEL <b>133.0</b>
----------------------	-------------------------------------	--	-------------------------	--------------------------



SE-3, 16 JUN 2022 to 14 JUL 2022

SE-3, 16 JUN 2022 to 14 JUL 2022