

MAYNR ONE DEPARTURE (RNAV)

SE-3, 16 JUN 2022 to 14 JUL 2022

**TOP ALTITUDE:
ASSIGNED BY ATC**



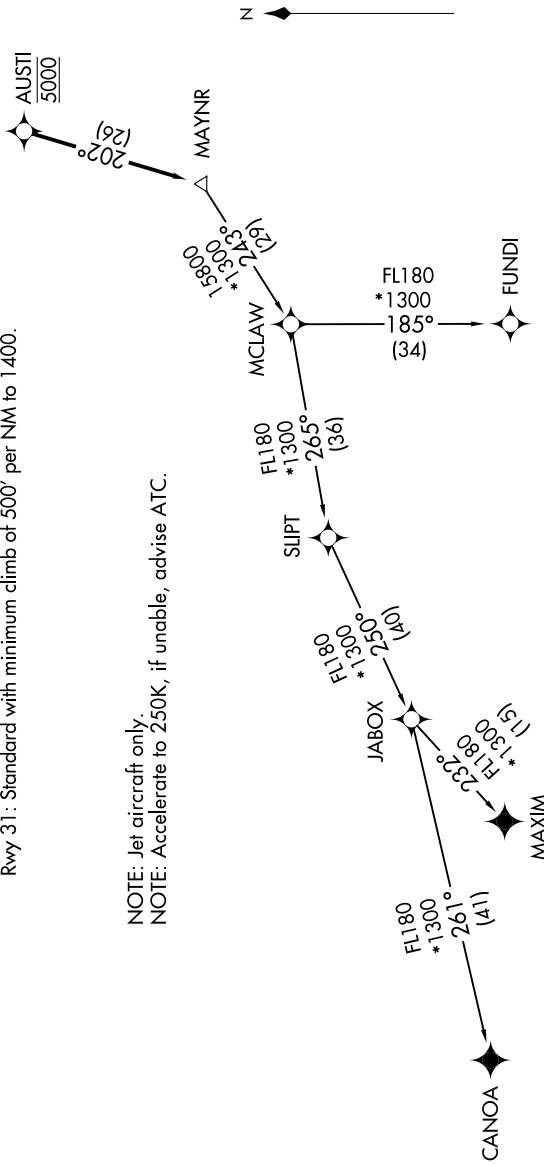
RNAV1 - DME/DME/IRU or GPS.
From SUIPT to MAXIM: RNAV 1 - GPS.
From SUIPT to CANOA: RNAV 1 - GPS.
RADAR required.

ATIS 124.0
CLNC DEL 133.0
GND CON 121.7
TAMiami TOWER * 118.9 (CTAF)
MIAMI DEP CON 125.5 354.1

TAKEOFF MINIMUMS

Rwy 9L: Standard with minimum climb of 500' per NM to 1300.
Rwy 9R: Standard with minimum climb of 500' per NM to 1500.
Rwy 13: Standard with minimum climb of 500' per NM to 1800.
Rwy 27L: Standard with minimum climb of 500' per NM to 1900.
Rwy 27R: Standard with minimum climb of 500' per NM to 1700.
Rwy 31: Standard with minimum climb of 500' per NM to 1400.

NOTE: Jet aircraft only.
NOTE: Accelerate to 250K, if unable, advise ATC.



(NARRATIVE ON FOLLOWING PAGE)

NOTE: Chart not to scale.

SE-3, 16 JUN 2022 to 14 JUL 2022