

VOR/DME DJB 113.6 Chan 83	APP CRS 125°	Rwy Idg TDZE Apt Elev	N/A N/A 758
---	------------------------	-----------------------------	--

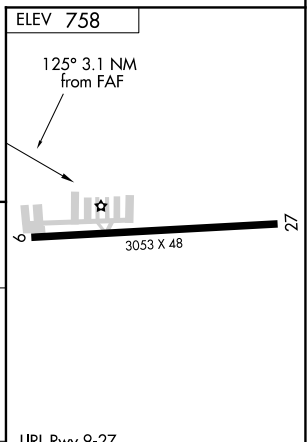
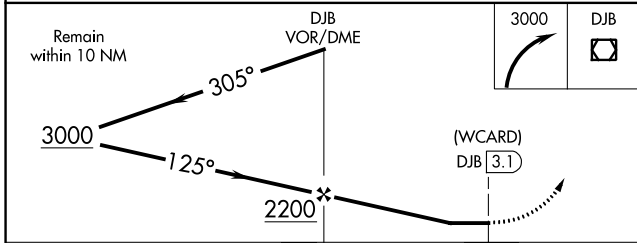
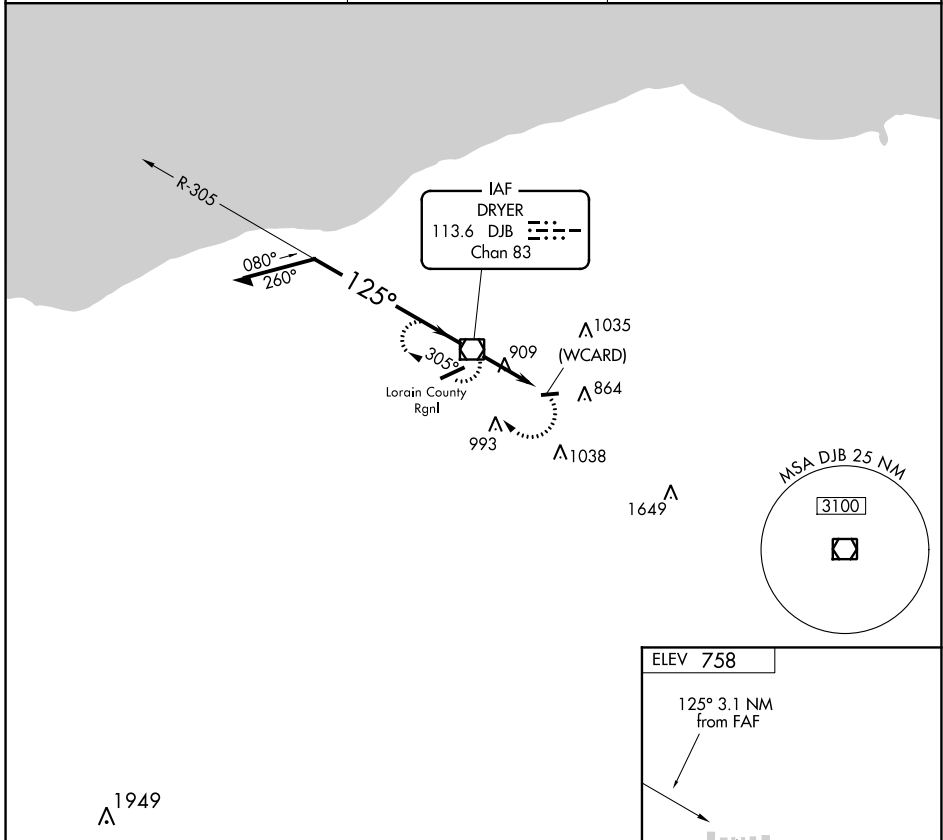
VOR or GPS-A

ELYRIA (1G1)

▼ Use Cleveland Hopkins Intl altimeter setting.
Procedure NA at night.
▲ NA Helicopter visibility reduction below 1 SM NA.

MISSED APPROACH: Climbing right turn to 3000 direct DJB VOR/DME and hold.

CLEVELAND APP CON 125.35 346.325	CLNC DEL 125.7	UNICOM 122.8 (CTAF)
--	--------------------------	-------------------------------



CATEGORY	FAF to MAP 3.1 NM			
	A	B	C	D
CIRCLING	1280-1 522 (600-1)	1320-1 562 (600-1)	1420-1¾ 662 (700-1¾)	NA
	Knots 60	90	120	150
	Min:Sec 3:06	2:04	1:33	1:14
			180	1:02