

WAAS CH <b>77800</b> <b>W09A</b>	APP CRS <b>092°</b>	Rwy Idg TDZE Apt Elev	<b>5600</b> <b>418</b> <b>452</b>
--	------------------------	-----------------------------	---

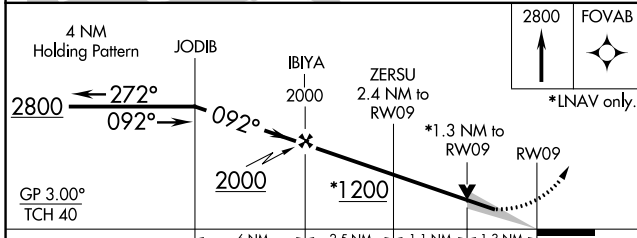
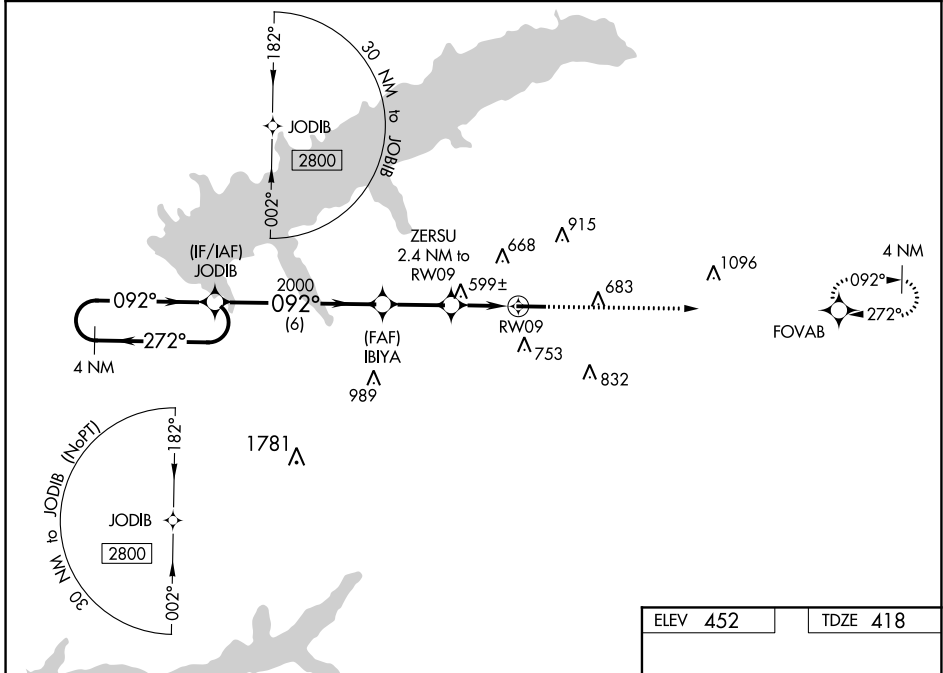
# RNAV (GPS) RWY 9

UNIVERSITY-OXFORD (UOX)

For uncompensated Baro-VNAV systems, LNAV/VNAV NA below -15°C (5°F) or above 54°C (130°F). DME/DME RNP-0.3 NA. When local altimeter setting not received, use Olive Branch altimeter setting and increase all DA 94 feet and all MDA 100 feet; increase LPV all Cats visibility ¼ mile, LNAV/VNAV all Cats visibility ⅓ mile, LNAV Cats C, D and Circling Cat C visibilities ¼ mile. Baro-VNAV and VDP NA when using Olive Branch altimeter setting.

**MISSED APPROACH:**  
Climb to 2800 direct FOVAB and hold.

AWOS-3PT <b>132.725</b>	MEMPHIS CENTER <b>128.5 381.4</b>	GCO <b>135.075</b>	UNICOM <b>123.0 (CTAF) 0</b>
----------------------------	--------------------------------------	-----------------------	---------------------------------



ELEV 452	TDZE 418
----------	----------

The diagram shows the runway layout for RWY 9 and RWY 27. RWY 9 is 5600 feet long with a 0.7% upward slope. RWY 27 is 5600 feet long with a 0.7% downward slope. The FOVAB (Final Approach Fix) is located 457 feet from the end of RWY 9. The diagram also shows the 2800 ft holding altitude and the 092°/272° headings for the missed approach procedure.

CATEGORY	A	B	C	D
LPV DA		668-¾	250 (300-¾)	
LNAV/VNAV DA		872-1½	454 (500-1½)	
LNAV MDA	860-1	442 (500-1)	860-1¾	442 (500-1¾)
<b>C</b> CIRCLING	980-1 528 (600-1)	1060-1 608 (700-1)	1380-2¾ 928 (1000-2¾)	1380-3 928 (1000-3)

SC-4, 16 JUN 2022 to 14 JUL 2022

SC-4, 16 JUN 2022 to 14 JUL 2022