

WAAS CH 78035 W16B	APP CRS 161°	Rwy ldg 3715 TDZE 186 Apt Elev 192
--	------------------------	---

RNAV (GPS) RWY 16R

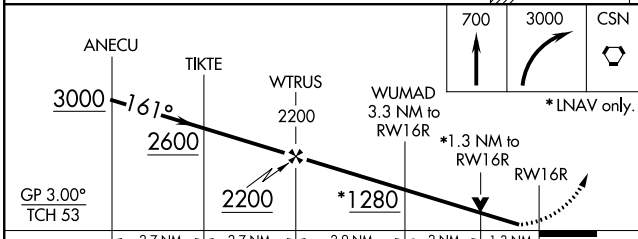
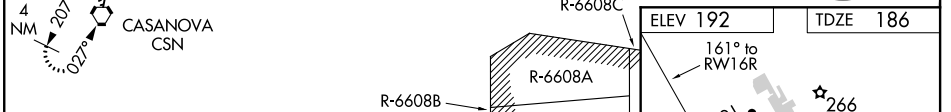
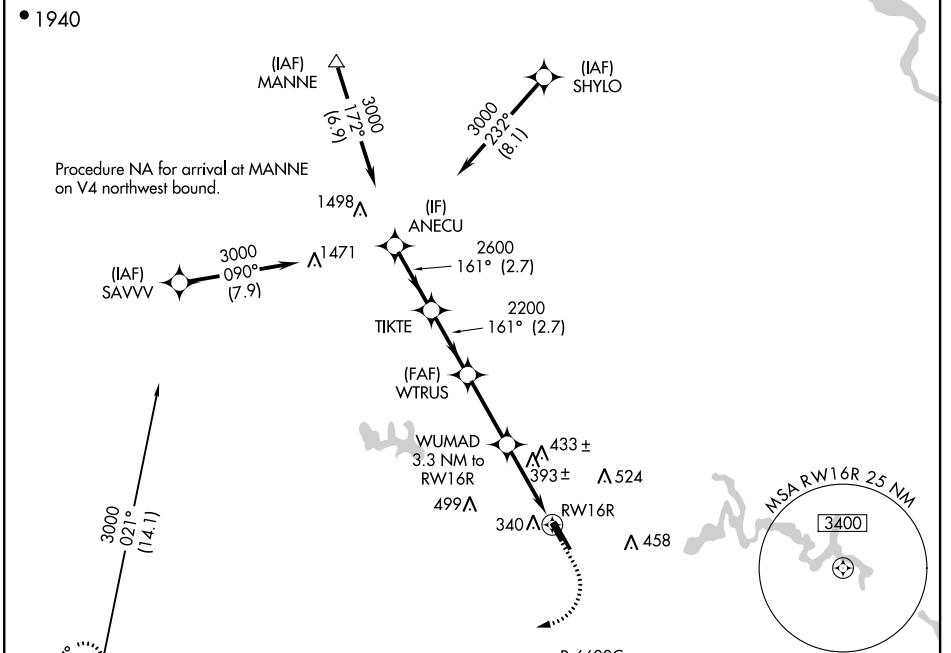
MANASSAS RGNL/HARRY P DAVIS FLD (HEF)

RNP APCH. RADAR required.

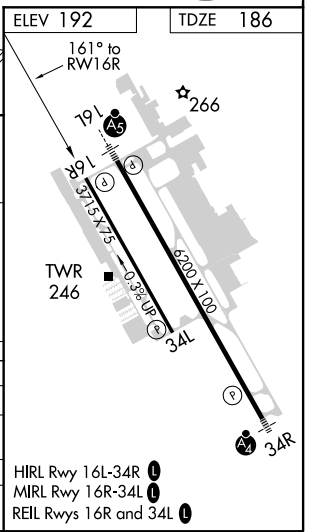
▼ Rwy 16R helicopter visibility reduction below 3/4 SM NA. For uncompensated Baro-VNAV systems, LNAV/VNAV NA below -15°C or above 54°C.

MISSED APPROACH: Climb to 700 then climbing right turn to 3000 direct CSN VORTAC and hold.

ATIS 125.175	POTOMAC APP CON 128.525 306.925	MANASSAS TOWER ★ 133.1 (CTAF) 0 360.75	GND CON 121.8	CLNC DEL 120.2
------------------------	---	--	-------------------------	--------------------------



CATEGORY	A	B	C	D
LPV DA	494-1		308 (400-1)	
LNNAV/VNAV DA	675-1 5/8		489 (500-1 5/8)	
LNNAV MDA	660-1	474 (500-1)	660-1 3/8	474 (500-1 3/8)
CIRCLING	720-1 528 (600-1)	740-1 548 (600-1)	840-1 3/4 648 (700-1 3/4)	880-2 1/4 688 (700-2 1/4)



NE-3, 16 JUN 2022 to 14 JUL 2022

NE-3, 16 JUN 2022 to 14 JUL 2022