

VOR/DME CCR 117.0 Chan 117	APP CRS 172°	Rwy ldg TDZE Apt Elev	4400 22 26
--	------------------------	-----------------------------	---------------------------------------

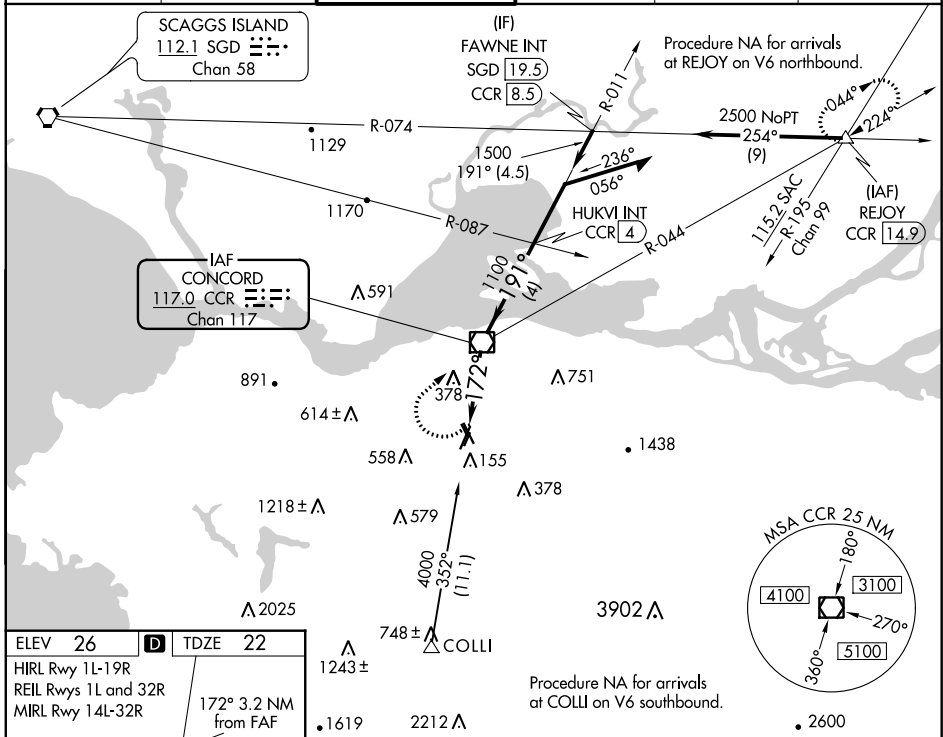
VOR RWY 19R

BUCHANAN FLD (CCR)

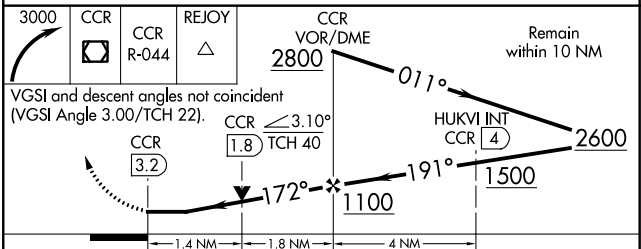
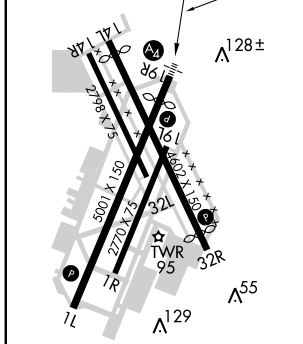
⚠ Inop table does not apply. Circling NA west of Rwy 1L-19R. Circling Rwy 1L, 32R NA at night. Rwy 19R helicopter visibility reduction below 3/4 SM NA. DME Required.

MALS MISSED APPROACH: Climbing right turn to 3000 direct CCR VOR/DME then on CCR VOR/DME R-044 to REJOY/CCR 14.9 DME and hold.
* Missed approach requires minimum climb of 320 feet per NM to 1700.

ATIS 124.7	TRAVIS APP CON 119.9 322.325	CONCORD TOWER ★ 119.7 (CTAF) 257.8	GND CON 121.9	CLNC DEL 118.75	UNICOM 122.95
----------------------	--	--	-------------------------	---------------------------	-------------------------



ELEV 26	D	TDZE 22
HIRL Rwy 1L-19R REIL Rwys 1L and 32R MIRL Rwy 14L-32R		
172° 3.2 NM from FAF		



CATEGORY	A	B	C	D
S-19R*	640-1	618 (700-1)	640-1¾	618 (700-1¾)
S-19R	1020-1¼ 998 (1000-1¼)	1020-1½ 998 (1000-1½)	1020-3	998 (1000-3)
C CIRCLING	1020-1¼ 994 (1000-1¼)	1020-1½ 994 (1000-1½)	1020-3 994 (1000-3)	1300-3 1274 (1300-3)

SW-2, 16 JUN 2022 to 14 JUL 2022

SW-2, 16 JUN 2022 to 14 JUL 2022