

|                                 |                        |   |
|---------------------------------|------------------------|---|
| WAAS<br>CH <b>58010</b><br>W23A | APP CRS<br><b>231°</b> | Rwy Idg <b>5572</b><br>TDZE <b>471</b><br>Apt Elev <b>480</b> |
|---------------------------------|------------------------|---|

# RNAV (GPS) RWY 23

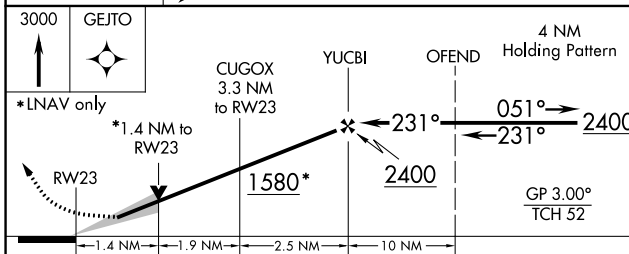
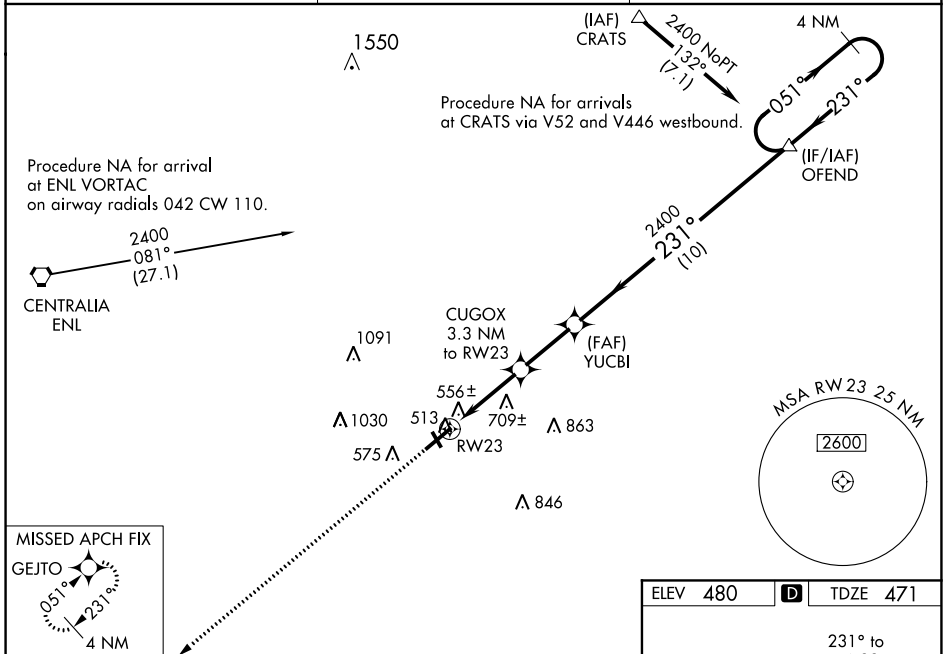
MOUNT VERNON (MVN)

**⚠** For uncompensated Baro-VNAV systems, LNAV/VNAV NA below -15° C (5°F) or above 48° C (118°F). DME/DME RNP-0.3 NA. When local altimeter setting not received, use Centralia altimeter setting: increase LPV DA to 766 feet; increase LNAV VNAV DA to 918 feet; increase all MDAs 60 feet and LNAV visibility Cat C/D and Circling Cat C ¼ SM. For inop MALSRL, when using Centralia altimeter setting, increase LPV all Cats visibility to 1 mile. VDP and Baro-VNAV NA when using Centralia altimeter setting. Circling to Rwy 15/33 NA at night.

**MALSRL**

**MISSED APPROACH:**  
Climb to 3000 direct GEJTO and hold.

|                          |  |                                |
|--------------------------|--|--------------------------------|
| AWOS-3PT<br><b>118.2</b> | KANSAS CITY CENTER<br><b>127.7 351.825</b> | UNICOM<br><b>123.0(CTAF) 0</b> |
|--------------------------|--|--------------------------------|



|          |          |          |
|----------|----------|----------|
| ELEV 480 | <b>D</b> | TDZE 471 |
|----------|----------|----------|

HIRL Rwy 5-23 **0**

MIRS Rwy 15-33 **0**

| CATEGORY     | A                  | B     | C                    | D                  |
|--------------|--------------------|-------|----------------------|--------------------|
| LPV DA       |                    | 721-½ | 250 (300-½)          |                    |
| LNAV/VNAV DA |                    | 873-1 | 402 (400-1)          |                    |
| LNAV MDA     | 960-½ 489 (500-½)  |       | 960-¾ 489 (500-¾)    | 960-1 489 (500-1)  |
| CIRCLING     | 1000-1 520 (600-1) |       | 1140-1¾ 660 (700-1¾) | 1380-3 900 (900-3) |

EC-3, 16 JUN 2022 to 14 JUL 2022

EC-3, 16 JUN 2022 to 14 JUL 2022