

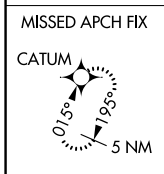
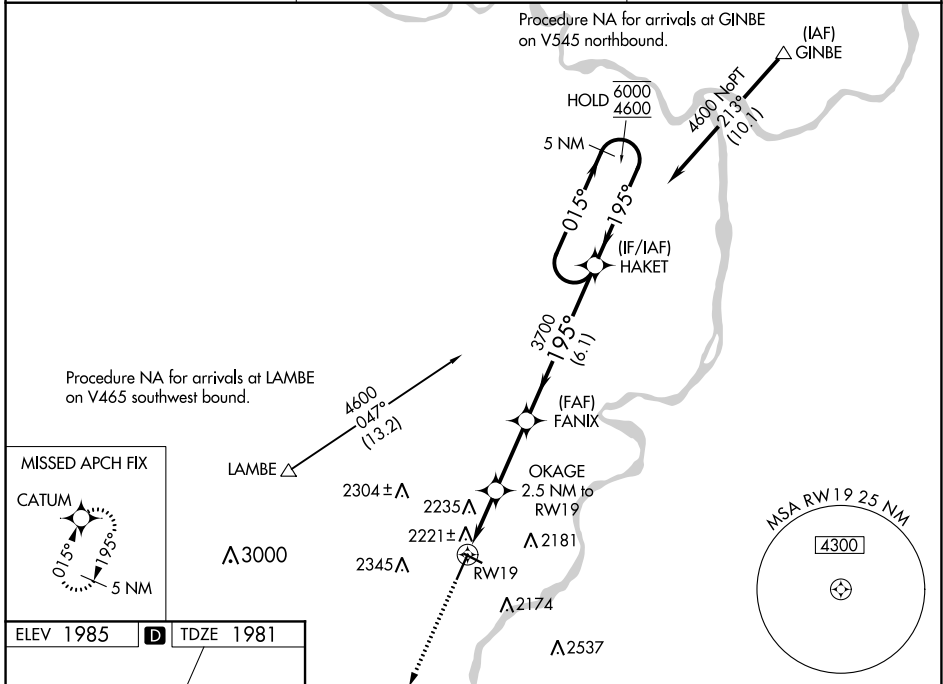
WAAS CH <b>86818</b> <b>W19A</b>	APP CRS <b>195°</b>	Rwy Idg TDZE <b>1981</b> Apt Elev <b>1985</b>
--	------------------------	---

# RNAV (GPS) RWY 19

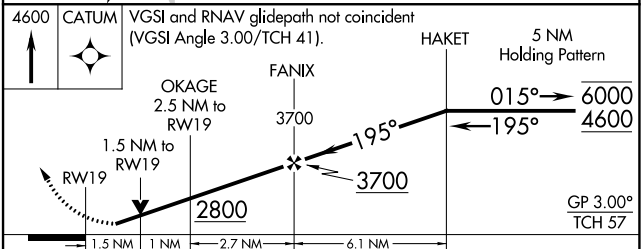
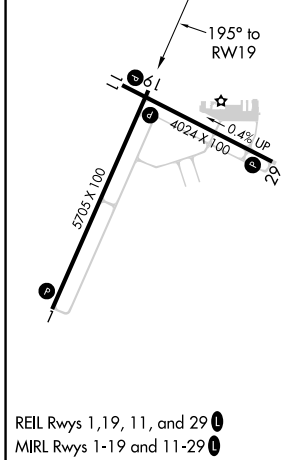
SIDNEY-RICHLAND RGNL (SDY)

RNP APCH - GPS.	MISSED APPROACH: Climb to 4600 direct CATUM and hold.
<p><b>▼</b> Rwy 19 helicopter visibility reduction below 3/4 SM NA. For uncompensated Baro-VNAV systems, LNAV/VNAV NA below -18°C or above 54°C. Circling Rwy 11 and Rwy 29 NA at night.</p>	

AWOS-3PT <b>119.275</b>	SALT LAKE CENTER <b>126.85 305.2</b>	UNICOM <b>122.8 (CTAF) 0</b>
----------------------------	---	---------------------------------



ELEV 1985	<b>D</b>	TDZE 1981
-----------	----------	-----------



CATEGORY	A	B	C	D
LPV DA	2234-1		253 (300-1)	
LNAV/VNAV DA	2543-1 5/8		562 (600-1 5/8)	
LNAV MDA	2500-1		2500-1 3/8	
<b>C</b> CIRCLING	2540-1	2620-1	2700-2	2840-2 3/4
	555 (600-1)	635 (700-1)	715 (800-2)	855 (900-2 3/4)