

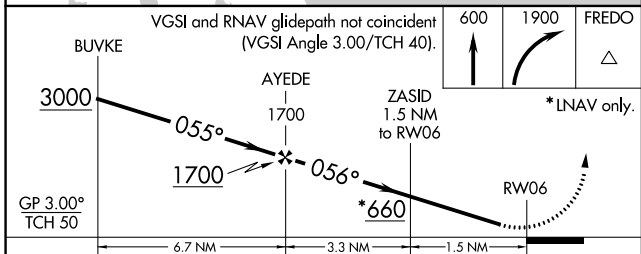
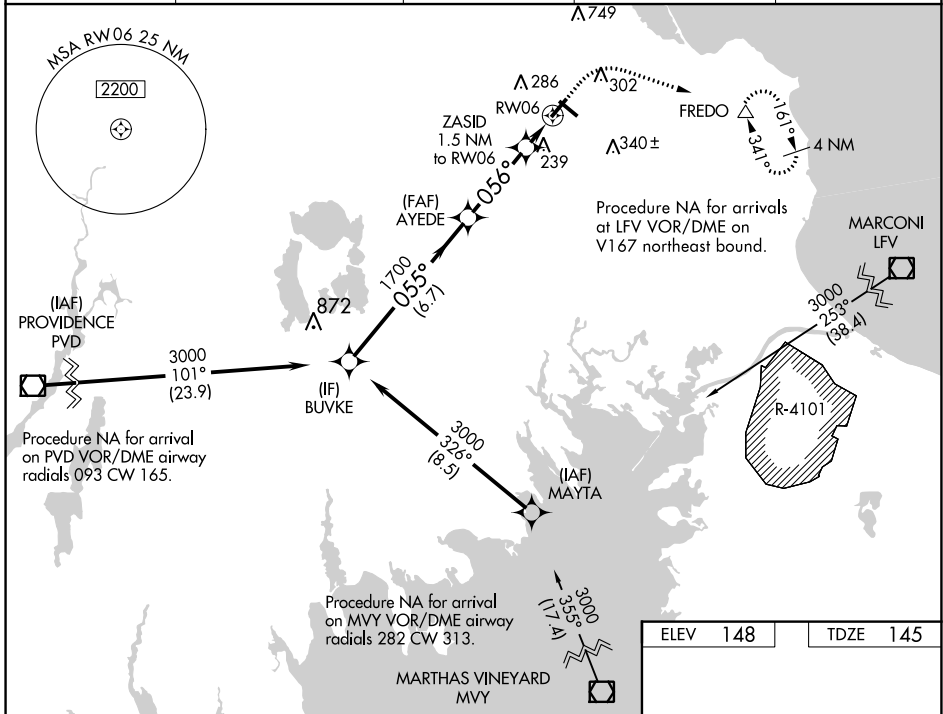
WAAS CH 40422 W06A	APP CRS 056°	Rwy Idg 4350 TDZE 145 Apt Elev 148
--	------------------------	---

RNAV (GPS) RWY 6

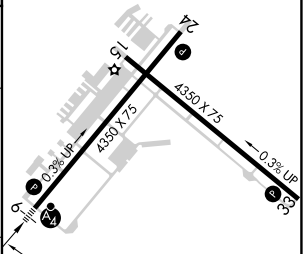
PLYMOUTH MUNI (PYM)

RNP APCH.	MALSF	MISSED APPROACH: Climb to 600 then climbing right turn to 1900 direct FREDO and hold.
<p>▼ Circling Rwy 15 NA at night. Rwy 6 helicopter visibility reduction below 3/4 SM NA. For uncompensated Baro-VNAV systems, LNAV/VNAV NA below -17°C (2°F) or above 54°C (130°F). Inop table does not apply to LPV. For inop ALS, increase LNAV/VNAV all Cats visibility to 7/8 SM.</p>		

ASOS 135.625	BOSTON APP CON * 118.2 284.6	CLNC DEL 127.75	UNICOM 122.725 (CTAF)	122.9
------------------------	--	---------------------------	---------------------------------	--------------



ELEV 148	TDZE 145
----------	----------



	A	B	C	D
LPV DA	345-3/4	200 (200-3/4)		NA
LNAV/VNAV DA	426-3/4	281 (300-3/4)		NA
LNAV MDA	500-3/4	355 (400-3/4)		NA
C CIRCLING	620-1 472 (500-1)	640-1 492 (500-1)	740-1 1/2 592 (600-1 1/2)	NA

REIL Rwy 24 **Ⓛ**
MIRL Rwy 6-24 and 15-33 **Ⓛ**

NE-1, 16 JUN 2022 to 14 JUL 2022

NE-1, 16 JUN 2022 to 14 JUL 2022