

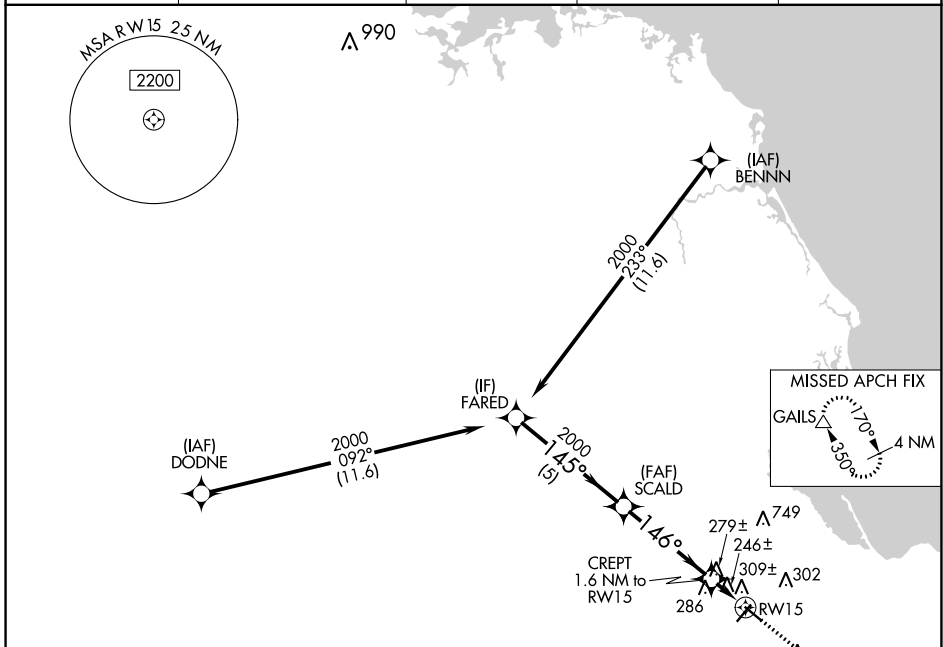
WAAS CH 93639 W15A	APP CRS 146°	Rwy Idg 4350 TDZE 147 Apt Elev 148
--	------------------------	---

RNAV (GPS) RWY 15

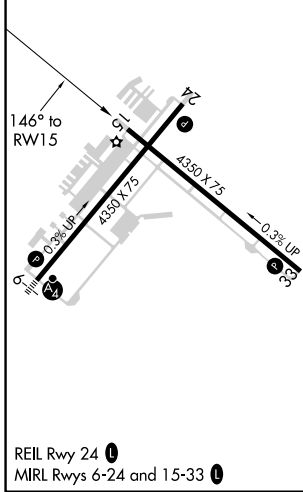
PLYMOUTH MUNI (PYM)

RNP APCH.	Rwy 15 helicopter visibility reduction below 1 SM NA. Straight-in Rwy 15 NA at night, Circling Rwy 15 NA at night.	MISSED APPROACH: Climb to 600 then climbing left turn to 2000 direct GAILS and hold.
-----------	---	--

ASOS 135.625	BOSTON APP CON * 118.2 284.6	CLNC DEL 127.75	UNICOM 122.725 (CTAF)	122.9
------------------------	--	---------------------------	---------------------------------	--------------



ELEV 148	TDZE 147
-----------------	-----------------



		Visual Segment - Obstacles.			
		600	2000	GAILS	
		↑	↶	△	
		FARED	SCALD	CREPT 1.6 NM to RWY 15	
		2000	2000	700	
		145°	146°		
		5 NM	4.1 NM	1.6 NM	
CATEGORY		A	B	C	D
LP MDA		500-1 353 (400-1)			NA
LNAV MDA		560-1	413 (500-1)	560-1 ¹ / ₈ 413 (500-1 ¹ / ₈)	NA
<input checked="" type="checkbox"/> CIRCLING		620-1 472 (500-1)	640-1 492 (500-1)	740-1 ¹ / ₂ 592 (600-1 ¹ / ₂)	NA

NE-1, 16 JUN 2022 to 14 JUL 2022

NE-1, 16 JUN 2022 to 14 JUL 2022