

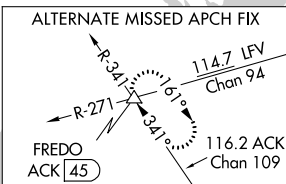
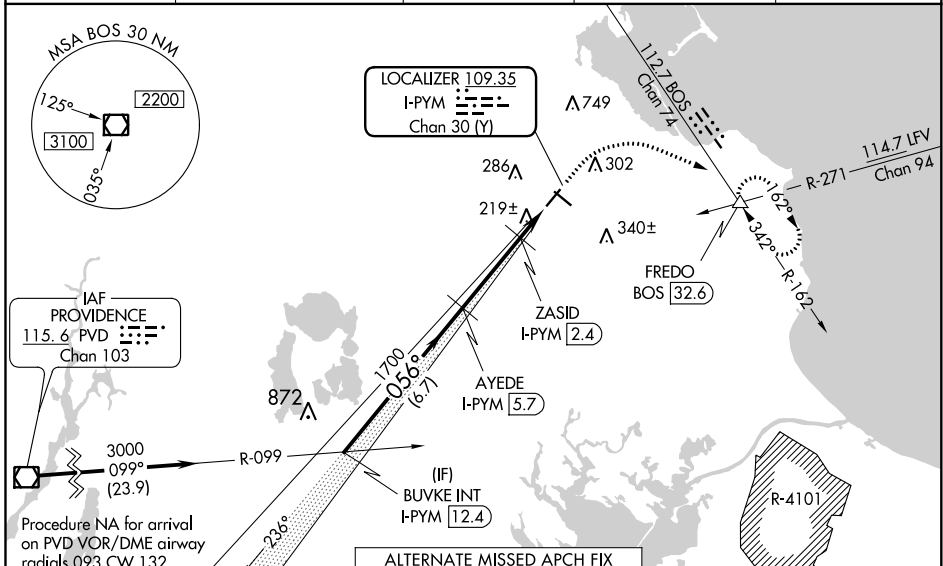
LOC/DME I-PYM <b>109.35</b> Chan 30 (Y)	APP CRS <b>056°</b>	Rwy Idg TDZE Apt Elev	<b>4350</b> <b>145</b> <b>148</b>
---	------------------------	-----------------------------	---

# ILS or LOC RWY 6

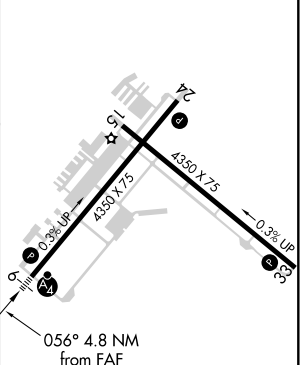
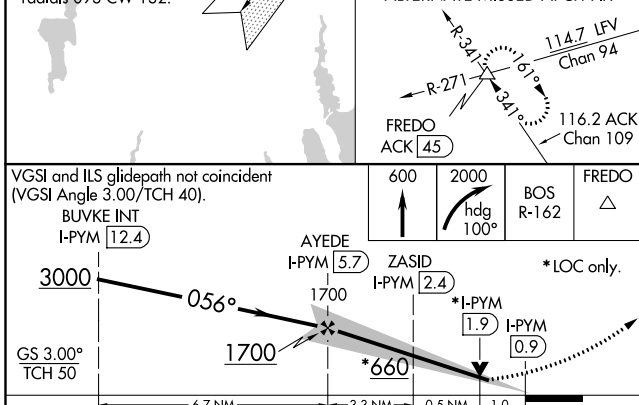
PLYMOUTH MUNI (PYM)

DME required for LOC only.		MALSF 	MISSED APPROACH: Climb to 600 then climbing right turn to 2000 on heading 100° and on BOS VOR/DME R-162 to FREDO INT/BOS 32.6 DME and hold.
	Circling Rwy 15 NA at night. Autopilot coupled approach NA below 1050 MSL. Rwy 6 helicopter visibility reduction below 3/4 SM NA. Inop table does not apply to S-ILS-6.		

ASOS <b>135.625</b>	BOSTON APP CON * <b>118.2 284.6</b>	CLNC DEL <b>127.75</b>	UNICOM <b>122.725</b> (CTAF)	<b>122.9</b>
------------------------	--	---------------------------	---------------------------------	--------------



ELEV 148	TDZE 145
----------	----------



CATEGORY	A	B	C	D
S-ILS 6	345-3/4	200 (200-3/4)		NA
S-LOC 6	480-3/4	335 (400-3/4)		NA
CIRCLING	620-1 472 (500-1)	640-1 492 (500-1)	740-1 1/2 592 (600-1 1/2)	NA

NE-1, 16 JUN 2022 to 14 JUL 2022

NE-1, 16 JUN 2022 to 14 JUL 2022