

VOR/DME HUO <b>116.1</b> Chan <b>108</b>	APP CRS <b>080°</b>	Rwy Idg TDZE Apt Elev	<b>3664</b> <b>359</b> <b>370</b>
--	------------------------	-----------------------------	---

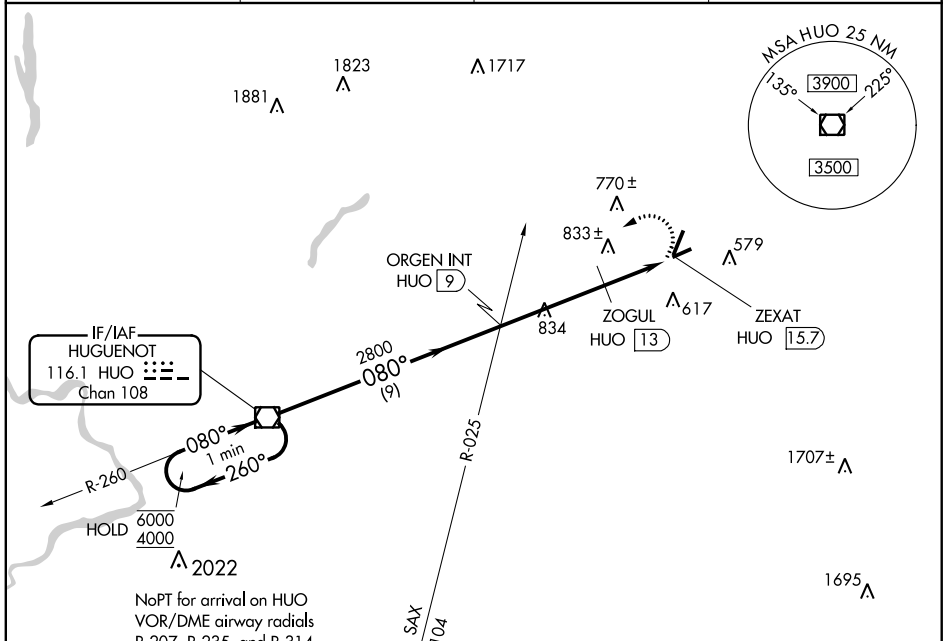
# VOR RWY 8

ORANGE COUNTY (MGJ)

**▼** Rwy 8 helicopter visibility reduction below 3/4 SM NA.  
**▲** Straight-in Rwy 8 NA at night, Circling Rwy 8, 22, 26 NA at night.

MISSED APPROACH: Climbing left turn to 4000 direct HUO VOR/DME and hold.

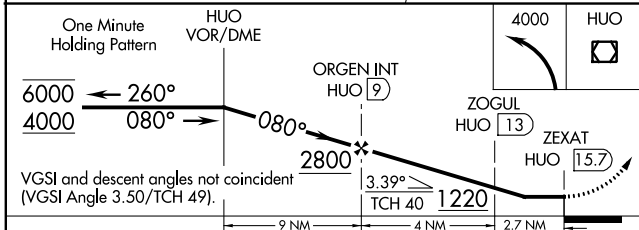
ASOS <b>119.275</b>	NEW YORK APP CON <b>132.75 363.1</b>	CLNC DEL <b>123.85</b>	UNICOM <b>122.725 (CTAF) 0</b>
------------------------	---	---------------------------	-----------------------------------



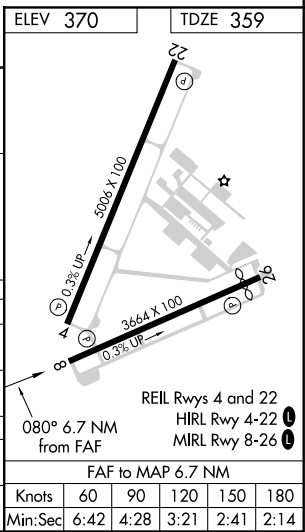
NE-2, 16 JUN 2022 to 14 JUL 2022

NE-2, 16 JUN 2022 to 14 JUL 2022

NoPT for arrival on HVO VOR/DME airway radials R-207, R-235, and R-31.4.



CATEGORY	A	B	C	D
S-8	1220-1 861 (900-1)	1220-1¼ 861 (900-1¼)	1220-2½ 861 (900-2½)	1220-2¾ 861 (900-2¾)
<b>C</b> CIRCLING	1220-1¼	850 (900-1¼)	1220-2½ 850 (900-2½)	1220-2¾ 850 (900-2¾)
ZOGUL MINIMUMS				
S-8	1160-1 801 (800-1)	1160-1¼ 801 (800-1¼)	1160-2½ 801 (800-2½)	1160-2¾ 801 (800-2¾)
<b>C</b> CIRCLING	1200-1¼	830 (900-1¼)	1200-2½ 830 (900-2½)	1220-2¾ 850 (900-2¾)



ELEV 370	TDZE 359				
FAF to MAP 6.7 NM					
Knots	60	90	120	150	180
Min:Sec	6:42	4:28	3:21	2:41	2:14