

# RNAV (GPS) RWY 4

ORANGE COUNTY (MGJ)

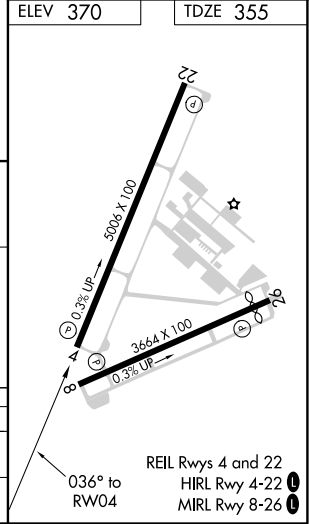
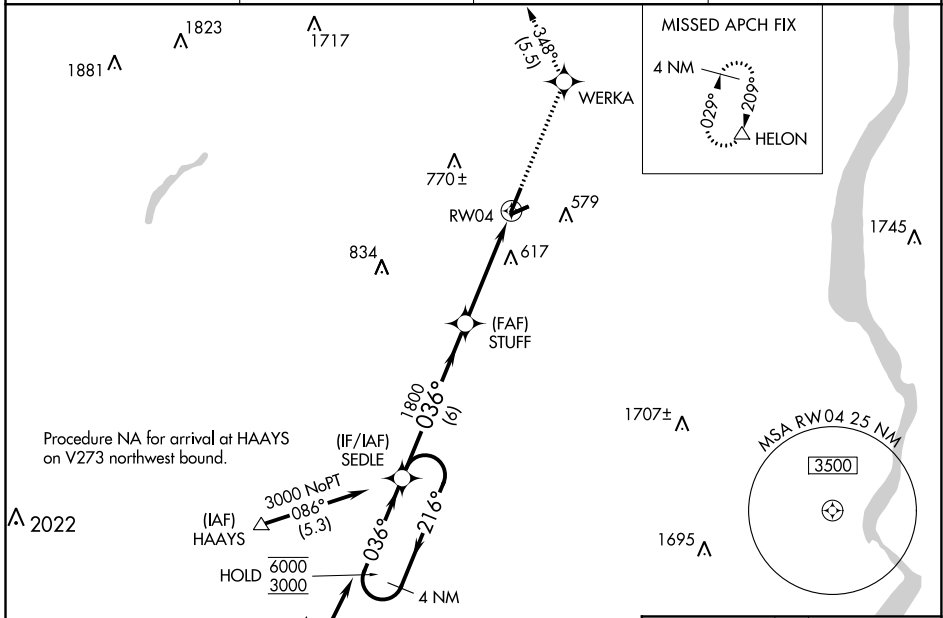
APP CRS <b>036°</b>	Rwy Idg <b>5006</b>
	TDZE <b>355</b>
	Apt Elev <b>370</b>

RNP APCH.

**⚠** Circling Rwy 8, 22, 26 NA at night. Rwy 4 helicopter visibility reduction below 3/4 SM NA.

MISSED APPROACH: Climb to 5300 direct WERKA and on track 348° to HELON and hold, continue climb-in-hold to 5300.

ASOS <b>119.275</b>	NEW YORK APP CON <b>132.75 363.1</b>	CLNC DEL <b>123.85</b>	UNICOM <b>122.725 (CTAF)</b>
------------------------	-----------------------------------------	---------------------------	---------------------------------



CATEGORY	A	B	C	D
LNVA MDA	1060-1	705 (700-1)	1060-2	705 (700-2)
<b>C</b> CIRCLING	1180-1	810 (900-1)	1180-2 1/4 810 (900-2 1/4)	1220-2 3/4 850 (900-2 3/4)

NE-2, 16 JUN 2022 to 14 JUL 2022

NE-2, 16 JUN 2022 to 14 JUL 2022