


WAAS CH <b>93800</b> <b>W36A</b>	APP CRS <b>004°</b>	Rwy Idg TDZE <b>795</b> Apt Elev <b>808</b>	<b>5941</b>
--	------------------------	---	-------------

# RNAV (GPS) RWY 36

FOND DU LAC COUNTY (F.L.D)

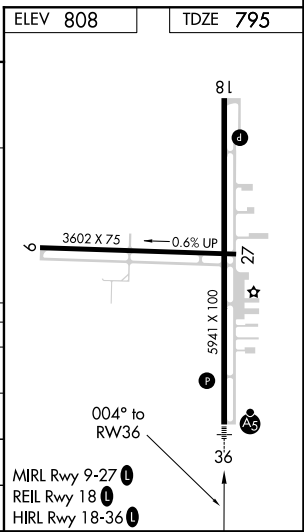
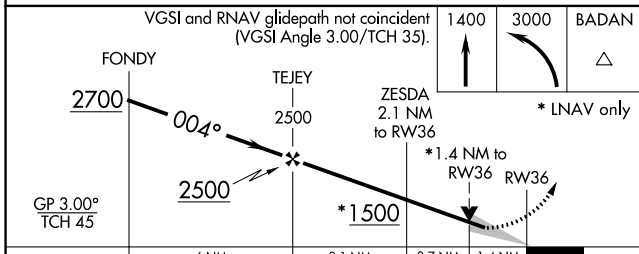
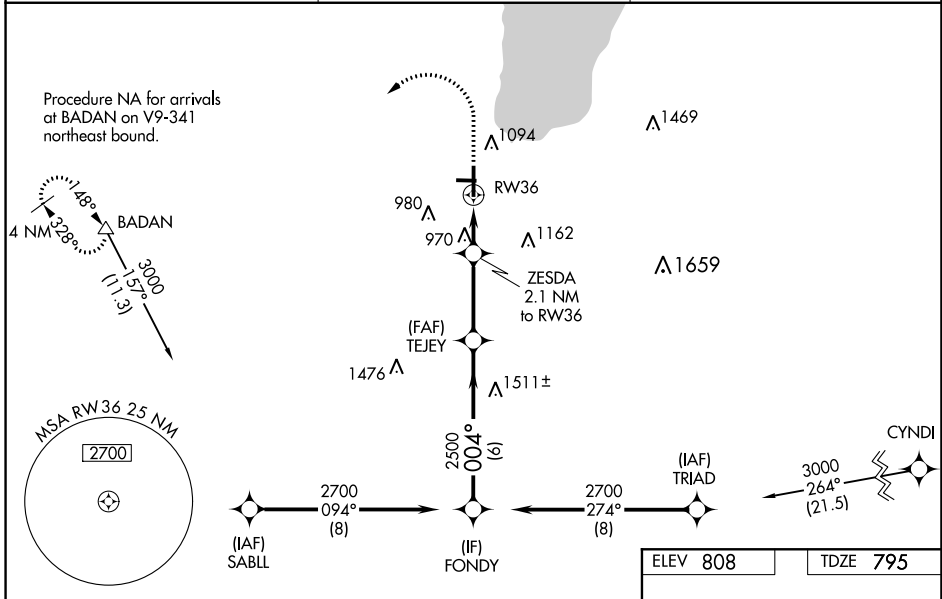
RNP APCH.

**⚠** Circling Rwy 9, 27 NA at night. Baro-VNAV and VDP NA when using Oshkosh altimeter setting. For uncompensated Baro-VNAV systems, LNAV/VNAV NA below -21°C or above 54°C. When local altimeter setting not received, use Oshkosh altimeter setting: increase LPV DA to 1202 feet and LNAV/VNAV DA to 1260 feet; increase all MDAs 40 feet and visibility Circling Cat C/D ¼ SM. For inop ALS, increase LNAV/VNAV all Cats visibility to 1½ SM and LNAV Cat A/B visibility to 1 SM, and Cat C/D visibility to 1½ SM. For inop ALS when using Oshkosh altimeter setting, increase LPV all Cats visibility to 1½ SM and LNAV/VNAV visibility all Cats to 1½ SM and LNAV Cat A/B visibility to 1 SM.

MALSR 

MISSED APPROACH: Climb to 1400 then climbing left turn to 3000 direct BADAN and hold.

ASOS <b>134.0</b>	MILWAUKEE APP CON <b>127.0 263.075</b>	UNICOM <b>123.05 (CTAF) 0</b>
----------------------	---	----------------------------------



CATEGORY	A	B	C	D
LPV DA	1171-¾		376 (400-¾)	
LNAV/VNAV DA	1229-1		434 (500-1)	
LNAV MDA	1280-¾	485 (500-¾)	1280-1	485 (500-1)
<b>C</b> CIRCLING	1400-1 592 (600-1)		1520-2 712 (800-2)	1520-2¼ 712 (800-2¼)

EC-3, 16 JUN 2022 to 14 JUL 2022

EC-3, 16 JUN 2022 to 14 JUL 2022