

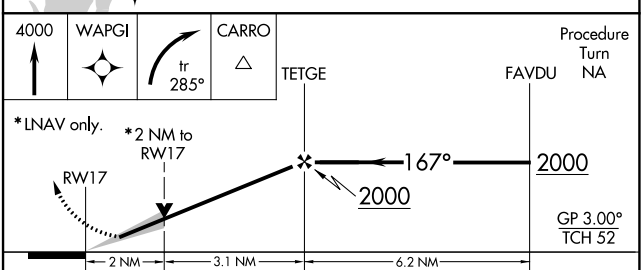
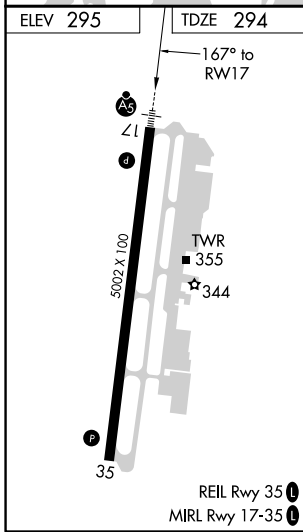
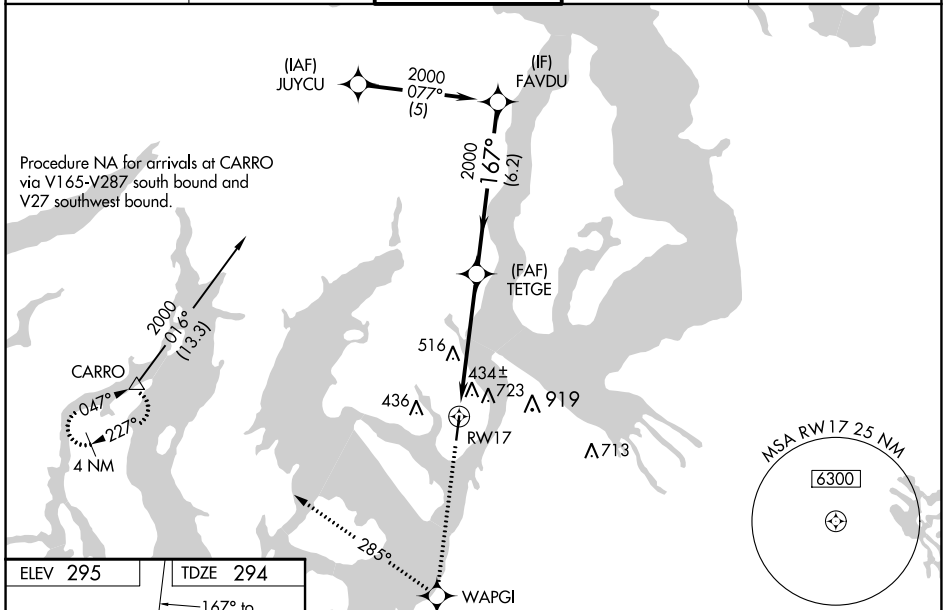
| | | | |
|--|------------------------|---|-------------|
| WAAS CH 82608 W17A | APP CRS 167° | Rwy Idg TDZE 294 Apt Elev 295 | 5002 |
|--|------------------------|---|-------------|

RNAV (GPS) RWY 17

TACOMA NARROWS (TIW)

| | | |
|---|--------|--|
| RNP APCH. | MALSRS | MISSED APPROACH: Climb to 4000 direct WAPGI and right turn via 285° track to CARRO and hold, continue climb-in-hold to 4000. |
| <p>▼ VDP NA with McChord Fld altimeter setting. For inoperative MALSRS, increase LPV all Cats visibility to 1 1/8 mile. Circling NA east of Rwy 17/35.</p> <p>▲ Baro-VNAV NA when using McChord Fld altimeter setting. For uncompensated Baro-VNAV systems, LNAV/VNAV NA below -15°C (5°F) or above 48°C (118°F). When local altimeter setting not received, use McChord Fld altimeter setting and increase all DA 25 feet, all MDA 40 feet, and increase LPV all Cats visibility 1/8 mile.</p> | | |

| | | | | |
|-----------------------|---------------------------------------|---|-------------------------|-------------------------|
| ATIS 124.05 | SEATTLE APP CON 120.1 290.9 | TACOMA TOWER ★ 118.5 (CTAF) 0 253.5 | GND CON 121.8 | UNICOM 122.95 |
|-----------------------|---------------------------------------|---|-------------------------|-------------------------|



| CATEGORY | A | B | C | D |
|--|---------|---------------|---------------|-----------------|
| LPV DA | | 638-5/8 | 344 (400-5/8) | |
| LNAV/VNAV DA | | 992-2 | 698 (700-2) | |
| LNAV MDA | 980-1/2 | 686 (700-1/2) | 980-1 1/2 | 686 (700-1 1/2) |
| <input checked="" type="checkbox"/> CIRCLING | 980-1 | 685 (700-1) | 980-2 | 980-2 1/4 |
| | | | 685 (700-2) | 685 (700-2 1/4) |

NW-1, 16 JUN 2022 to 14 JUL 2022

NW-1, 16 JUN 2022 to 14 JUL 2022