


WAAS CH <b>97300</b> <b>W04A</b>	APP CRS <b>037°</b>	Rwy Idg <b>7200</b> TDZE <b>4205</b> Apt Elev <b>4216</b>
--	------------------------	---

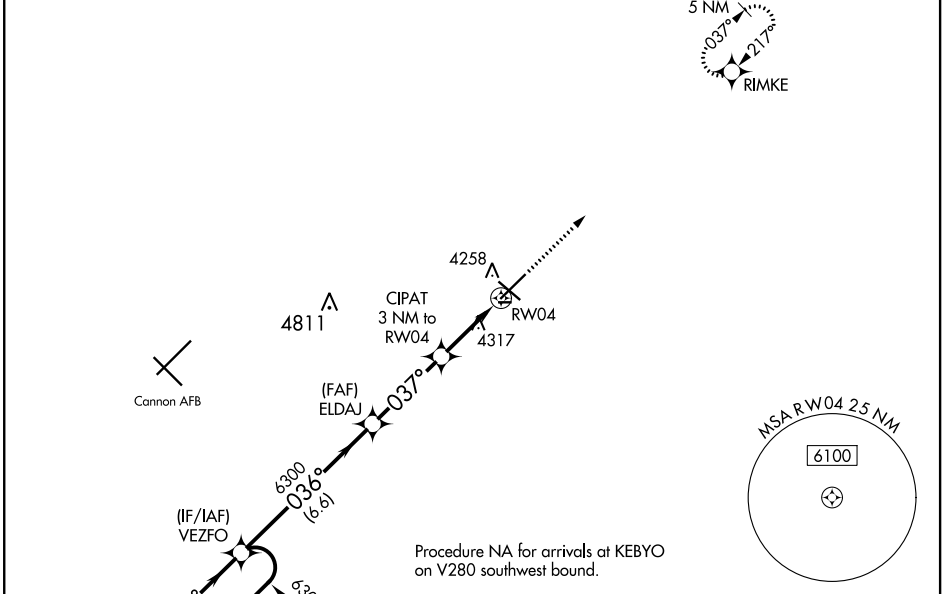
# RNAV (GPS) RWY 4

CLOVIS RGNL (CVN)

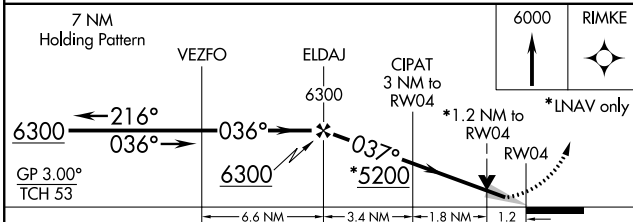
⚠ For uncompensated Baro-VNAV systems, LNAV/VNAV NA below -23°C (-9°F) or above 49°C (121°F). DME/DME RNP-0.3 NA. When local altimeter setting not received, use Cannon AFB altimeter setting and increase all DA and MDA 40 feet; increase LNAV Cat C/D visibility ¼ mile. For inop MALSR, increase LNAV/VNAV all Cats visibility to ¾ mile. For inop MALSR when using Cannon AFB altimeter setting, increase LNAV Cat C/D visibility to 1 ¾ mile. Baro-VNAV and VDP NA when using Cannon AFB altimeter setting.

MALSR  MISSED APPROACH: Climb to 6000 direct RIMKE and hold.

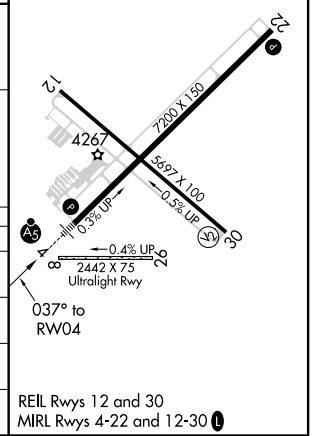
AWOS-3PT <b>135.375</b>	CANNON APP CON <b>118.425 352.1</b>	CLNC DEL <b>119.0</b>	UNICOM <b>122.8 (CTAF) ①</b>
----------------------------	--	--------------------------	---------------------------------



7 NM Holding Pattern	6000	RIMKE
----------------------	------	-------



ELEV 4216	TDZE 4205
-----------	-----------



CATEGORY	A	B	C	D
LPV DA		4405-½	200 (200-½)	
LNAV/VNAV DA		4455-½	250 (300-½)	
LNAV MDA	4640-½	435 (500-½)	4640-¾	435 (500-¾)
<b>C</b> CIRCLING	4680-1	464 (500-1)	4700-1½ 484 (500-1½)	4820-2 604 (700-2)

REIL Rwy 12 and 30  
MIRL Rwy 4-22 and 12-30 ①

SW-1, 16 JUN 2022 to 14 JUL 2022

SW-1, 16 JUN 2022 to 14 JUL 2022