

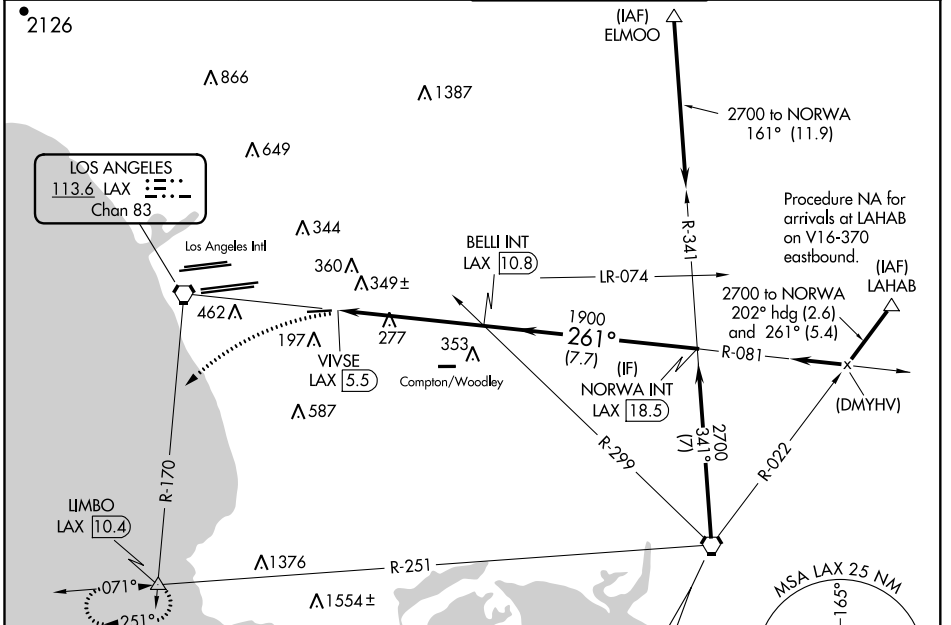
VORTAC LAX <b>113.6</b> Chan 83	APP CRS <b>261°</b>	Rwy Idg TDZE Apt Elev	<b>4193</b> <b>63</b> <b>66</b>
---------------------------------------	------------------------	-----------------------------	---------------------------------------

# VOR RWY 25

JACK NORTHROP FLD/HAWTHORNE MUNI (HHR)

<p><b>⚠</b> Circling NA north of Rwy 7-25. Rwy 25 helicopter visibility reduction below 1 SM NA. When local altimeter setting not received, use Los Angeles Intl altimeter setting. Circling Rwy 7 NA at night. Inop table does not apply to S-25 Cats A and B. For inop ALS, increase S-25 Cats C/D visibility to 1/8.</p>	<p>ODALS ⬆</p>	<p>MISSED APPROACH: Climbing left turn to 3000 via heading 210° and LAX VORTAC R-170 to LIMBO INT/LAX 10.4 DME and hold.</p>
---	--------------------	--

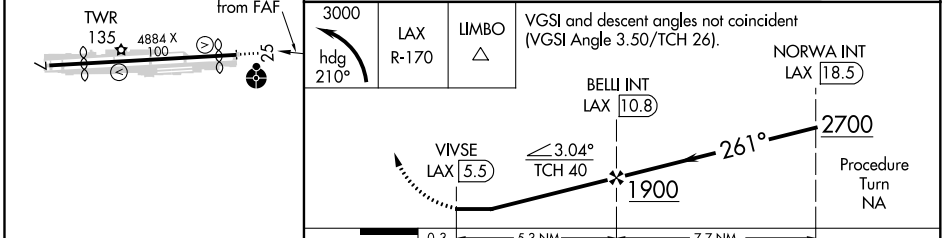
ATIS <b>118.4</b>	SOCAL APP CON <b>124.9 269.0</b>	HAWTHORNE TOWER ★ <b>121.1 (CTAF) 0 257.8</b>	GND CON <b>125.1</b>
----------------------	-------------------------------------	--	-------------------------



ELEV 66	TDZE 63
---------	---------



Procedure NA for arrivals at SLI VORTAC on V459-597 southeast bound.



REIL Rwy 25 MIRL Rwy 7-25	FAF to MAP 5.3 NM			
	A	B	C	D
S-25	620-1	557 (600-1)	620-1 <sup>3</sup> / <sub>8</sub>	557 (600-1 <sup>3</sup> / <sub>8</sub> )
CIRCLING	620-1	554 (600-1)	780-2 714 (800-2)	780-2 <sup>1</sup> / <sub>4</sub> 714 (800-2 <sup>1</sup> / <sub>4</sub> )

# VOR RWY 25

SW-3, 16 JUN 2022 to 14 JUL 2022

SW-3, 16 JUN 2022 to 14 JUL 2022