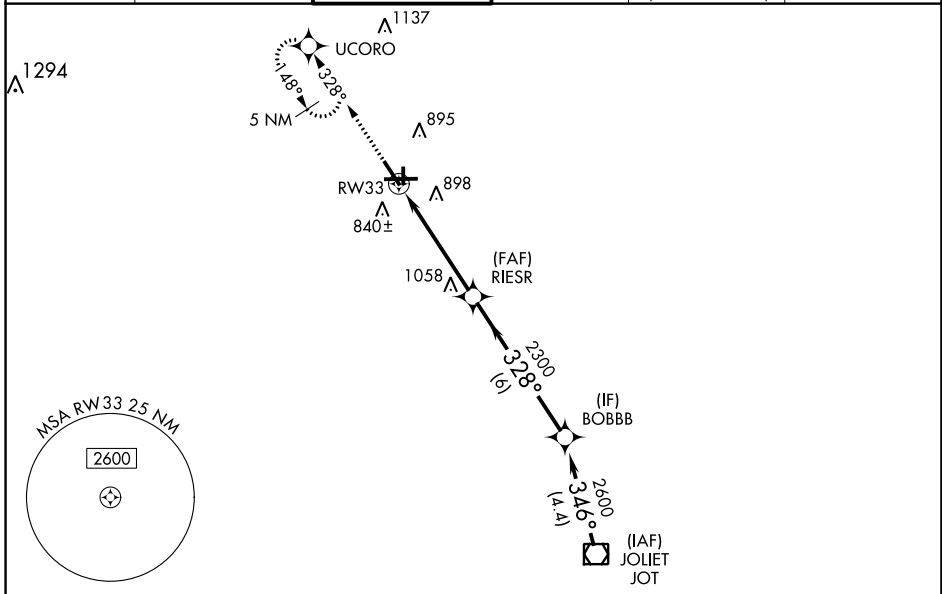


WAAS CH <b>49105</b> <b>W33A</b>	APP CRS <b>328°</b>	Rwy Idg <b>5503</b> TDZE <b>705</b> Apt Elev <b>712</b>
--	------------------------	---

# RNAV (GPS) RWY 33

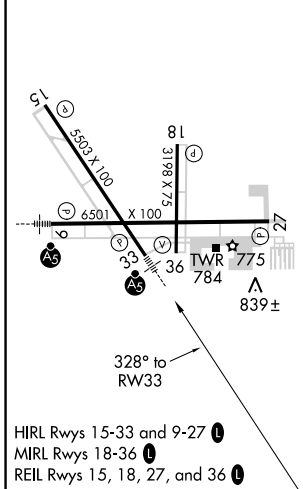
AURORA MUNI (A.R.R.)

RNP APCH.		MALSR 		MISSED APPROACH: Climb to 3000 direct UCORO and hold, continue climb-in-hold to 3000.	
For uncompensated Baro-VNAV systems, LNAV/VNAV NA below -16°C or above 54°C. For inop MALSR, increase LPV visibility to 1/4 SM all Cts, LNAV Cts A/B visibility to 1 SM.					
ATIS <b>125.85</b>	CHICAGO APP CON <b>133.5 349.0</b>	AURORA TOWER * <b>120.6 (CTAF) 0</b>	GND CON <b>121.7</b>	CLNC DEL <b>121.7</b> <small>(When tower closed)</small>	UNICOM <b>122.95 123.5</b>



ELEV 712	TDZE 705
----------	----------

Procedure NA for arrival on JOT VOR/DME airway radials 314 CW 328.



3000 UCORO	JOT VOR/DME			
*LNAV only.	RW33	RIESR	BOBBB	2600
	*1.3 NM to RW33	2300	328°	346°-2600
	1.3 NM	3.5 NM	6 NM	4.4 NM
CATEGORY	A	B	C	D
LPV DA	1042-3/4		337 (400-3/4)	
LNAV/VNAV DA	1194-1 1/4		489 (500-1 1/4)	
LNAV MDA	1140-3/4		435 (500-3/4)	
CIRCLING	1200-1		488 (500-1)	
	1200-1		488 (500-1 1/2)	
	1140-1		435 (500-1)	
	1320-2		608 (700-2)	

EC-3, 16 JUN 2022 to 14 JUL 2022

EC-3, 16 JUN 2022 to 14 JUL 2022