

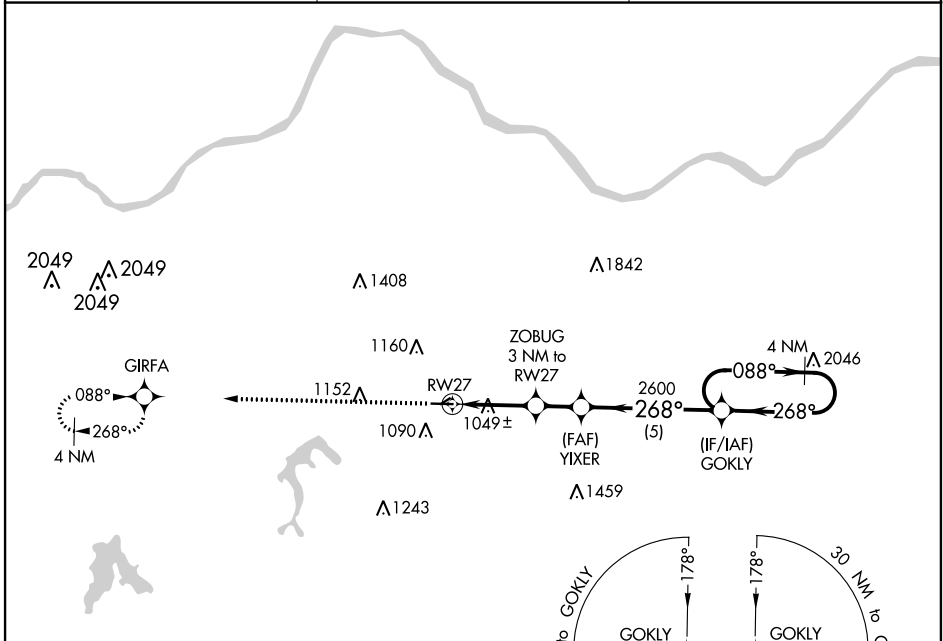
APP CRS 268°	Rwy Idg 4507
	TDZE 818
	Apt Elev 835

RNAV (GPS) RWY 27

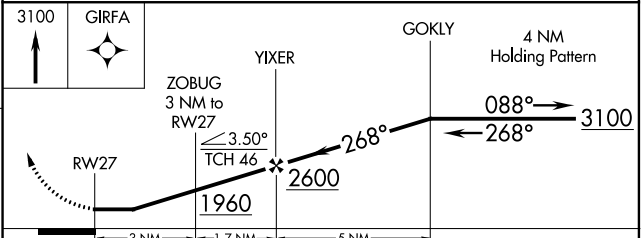
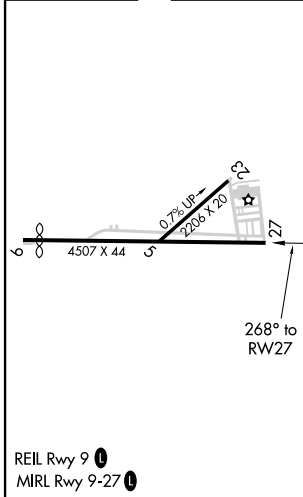
EAST KANSAS CITY (3GV)

NA DME/DME RNP-0.3 NA. Helicopter visibility reduction below 1 SM NA. Procedure NA at night. Use Charles B Wheeler Downtown altimeter setting. MISSED APPROACH: Climb to 3100 direct GIRFA and hold.

KANSAS CITY APP CON 118.4 307.35	CLNC DEL 121.3	UNICOM 122.8 (CTAF)
--	--------------------------	-------------------------------



ELEV 835	TDZE 818
----------	----------



CATEGORY	A	B	C	D
LNAV MDA	1360-1	542 (600-1)	NA	
C CIRCLING	1460-1	625 (700-1)	NA	

NC-3, 16 JUN 2022 to 14 JUL 2022

NC-3, 16 JUN 2022 to 14 JUL 2022