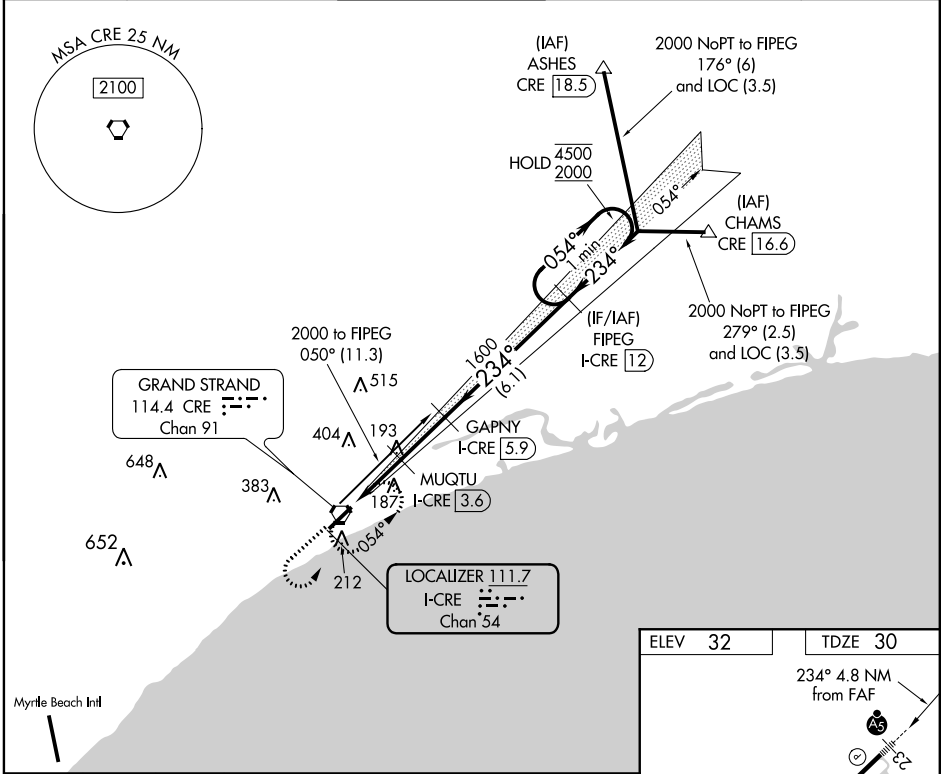


LOC/DME I-CRE 111.7 Chan 54	APP CRS 234°	Rwy Idg TDZE 30 Apt Elev 32	5997
---	------------------------	---	-------------

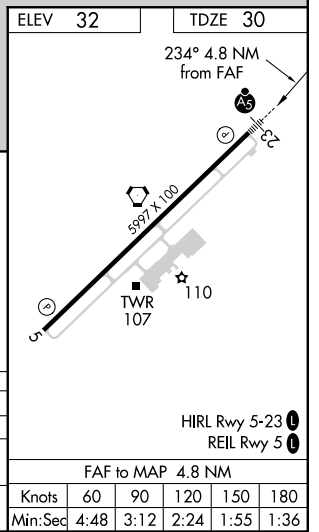
ILS or LOC RWY 23

GRAND STRAND (CRE)

DME required.		MALS R		MISSED APPROACH: Climb to 1000 then climbing left turn to 2000 direct CRE VORTAC and hold, continue climb-in-hold to 2000.	
<p>▼ Rwy 23 helicopter visibility reduction below 3/4 SM NA. For inop ALS, increase S-LOC 23 Cat A/B visibility to 1 SM.</p> <p>▲</p>		<p>STRAND TOWER * 124.6 (CTAF) 0 257.6</p>		<p>GND CON 121.8 257.6</p>	
ATIS 119.625	MYRTLE BEACH APP CON * 119.2 350.3			CLNC DEL 121.8	UNICOM 122.95



1000	2000	CRE	One Minute Holding Pattern				
<p>↑</p>		<p>↶</p>		<p>⬠</p>			
<p>I-CRE 1.1</p>		<p>I-CRE 2.3</p>		<p>I-CRE 3.6</p>		<p>FIPEG I-CRE 12</p>	
<p>1.2 NM</p>		<p>1.3 NM</p>		<p>2.3 NM</p>		<p>6.1 NM</p>	
CATEGORY	A		B		C		D
S-ILS 23	230-1/2		200 (200-1/2)				
S-LOC 23	460-3/4		430 (500-3/4)				
CIRCLING	520-1 488 (500-1)		720-2 688 (700-2)		720-2 1/4 688 (700-2 1/4)		



SE-2, 16 JUN 2022 to 14 JUL 2022

SE-2, 16 JUN 2022 to 14 JUL 2022