

LOC/DME I-AVL 110.5 Chan 42	APP CRS 347°	Rwy Idg TDZE 8001 2141 Apt Elev 2164
--	------------------------	---

ILS or LOC RWY 35

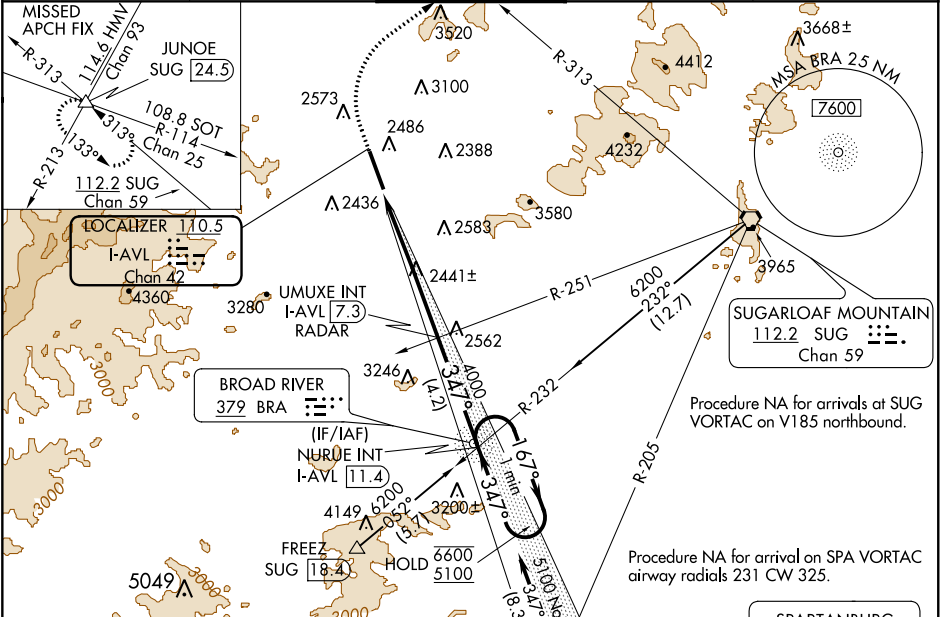
ASHEVILLE RGNL (AVL)

▽
▲ Circling NA west of Rwy 17-35.

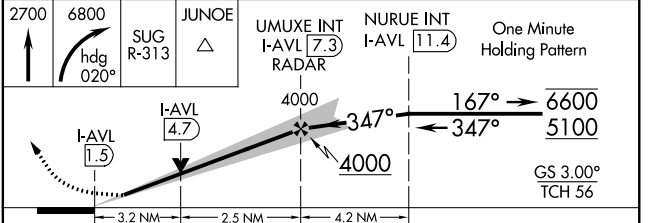
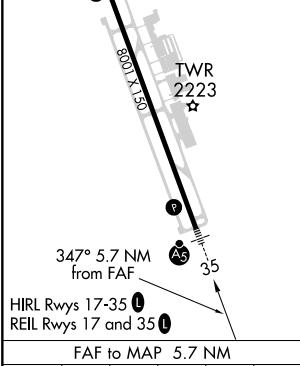
MALSR
AS

MISSED APPROACH: Climb to 2700 then climbing right turn to 6800 on heading 020° and on SUG VORTAC R-313 to JUNOE INT/SUG 24.5 DME and hold, continue climb-in-hold to 6800.
* Missed approach requires minimum climb of 340 feet per NM to 4200.

ATIS 120.2	ASHEVILLE APP CON* 124.65 269.575	ASHEVILLE TOWER* 121.1 (CTAF) 0 257.8	GND CON 121.9	UNICOM 122.95
----------------------	---	---	-------------------------	-------------------------



ELEV 2164	D	TDZE 2141
-----------	----------	-----------



Knots	60	90	120	150	180
Min:Sec	5:42	3:48	2:51	2:17	1:54

CATEGORY	A	B	C	D
S-ILS 35*	2360/24		219 (200-½)	
S-ILS 35	3019-4		878 (900-4)	
S-LOC 35	3200/40 1059 (1100-¾)	3200/55 1059 (1100-1)	3200-2½	1059 (1100-2½)
☑ CIRCLING	3200-1¼ 1036 (1100-1¼)	3200-1½ 1036 (1100-1½)	3460-3 1296 (1300-3)	3720-3 1556 (1600-3)

SE-2, 16 JUN 2022 to 14 JUL 2022

SE-2, 16 JUN 2022 to 14 JUL 2022