

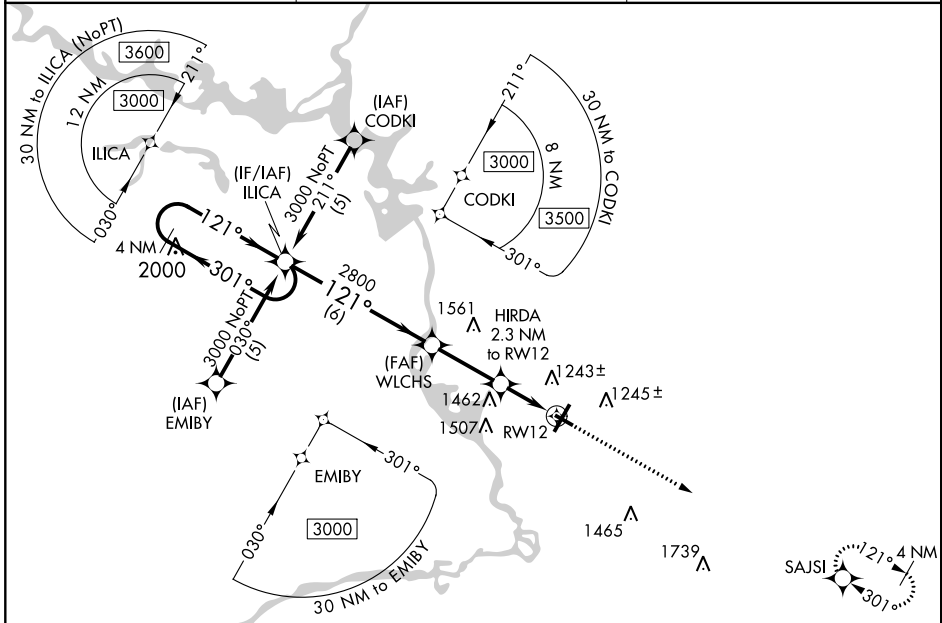
APP CRS	Rwy Idg	<b>3635</b>
<b>121°</b>	TDZE	<b>1108</b>
	Apt Elev	<b>1110</b>

# RNAV (GPS) RWY 12

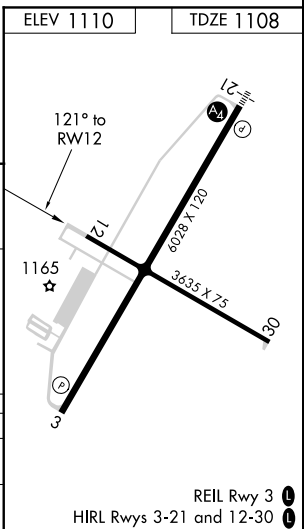
STEVENS POINT MUNI (STE)

RNP APCH - GPS.	<p><b>⚠</b> Rwy 12 helicopter visibility reduction below <math>\frac{3}{4}</math> SM NA. When local altimeter not received, use Mosinee altimeter setting and increase all MDA 60 feet, increase LNAV Cat C and D visibility <math>\frac{1}{8}</math> SM. VDP NA when using Mosinee altimeter setting.</p>	MISSED APPROACH: Climb to 3000 direct SAJSI and hold.
-----------------	--	---

AWOS-3 <b>119.275</b>	MINNEAPOLIS CENTER <b>124.4 317.7</b>	UNICOM <b>122.7 (CTAF) 0</b>
--------------------------	--	---------------------------------



4 NM Holding Pattern		ILICA		WLCHS		HIRDA 2.3 NM to RW12		3000	SAJSI
3000 ← 301°		→ 121°		→ 121°		→ 121°		↑	✧
3000		2800		1880		1165			
6 NM		2.8 NM		0.4		1.9			
CATEGORY	A	B	C	D					
LNAV MDA	1760-1	652 (700-1)	1760-1 $\frac{7}{8}$	652 (700-1 $\frac{7}{8}$ )					
<b>C</b> CIRCLING	1760-1	650 (700-1)	1860-2 $\frac{1}{4}$ 750 (800-2 $\frac{1}{4}$ )	1860-2 $\frac{1}{2}$ 750 (800-2 $\frac{1}{2}$ )					



EC-3, 16 JUN 2022 to 14 JUL 2022

EC-3, 16 JUN 2022 to 14 JUL 2022