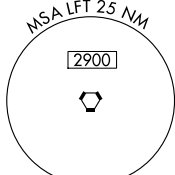
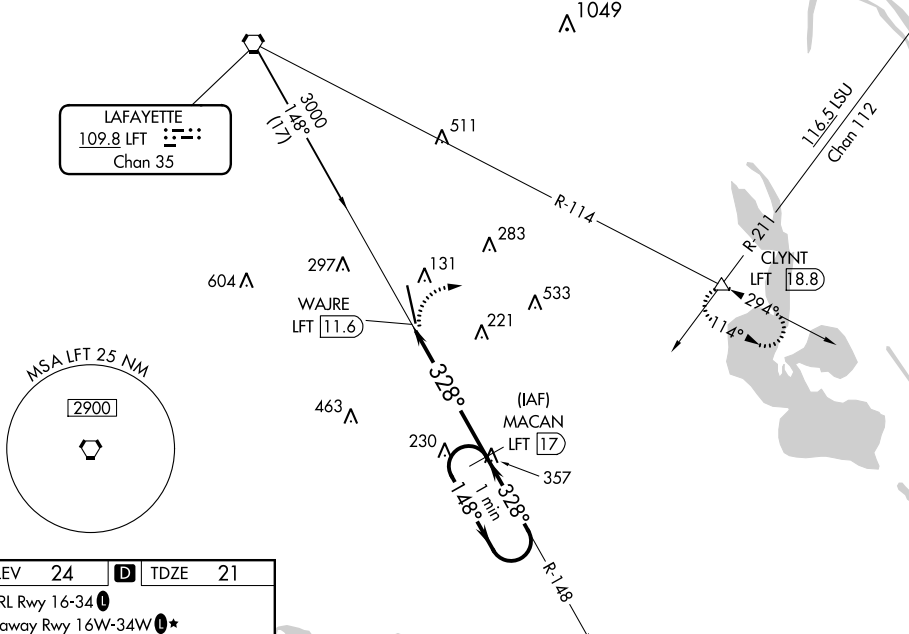


VORTAC LFT <b>109.8</b>	APP CRS <b>328°</b>	Rwy Idg TDZE Apt Elev	<b>8002</b> <b>21</b> <b>24</b>
Chan <b>35</b>			

**VOR RWY 35**  
ACADIANA RGNL (A.R.A.)

<p>Circling NA to Rwy's 17W and 35W. DME required. Inop table does not apply.</p>		<p>MALSR</p>	<p>MISSED APPROACH: Climbing right turn to 2000 on heading 080° and LFT R-114 to CLYNT INT/LFT 18.8 DME and hold.</p>				
ASOS <b>133.325</b>	LAFAYETTE APP CON * <b>121.1 268.7</b>	ACADIANA TOWER * <b>125.0 (CTAF) 239.3</b>	GND CON <b>121.7</b>	CLNC DEL <b>121.7</b>	CLNC DEL <b>118.05</b> (when twr closed)	UNICOM <b>122.95</b>	<b>0 *</b> <b>122.7</b>

**DME REQUIRED**



SC-4, 16 JUN 2022 to 14 JUL 2022

SC-4, 16 JUN 2022 to 14 JUL 2022

