

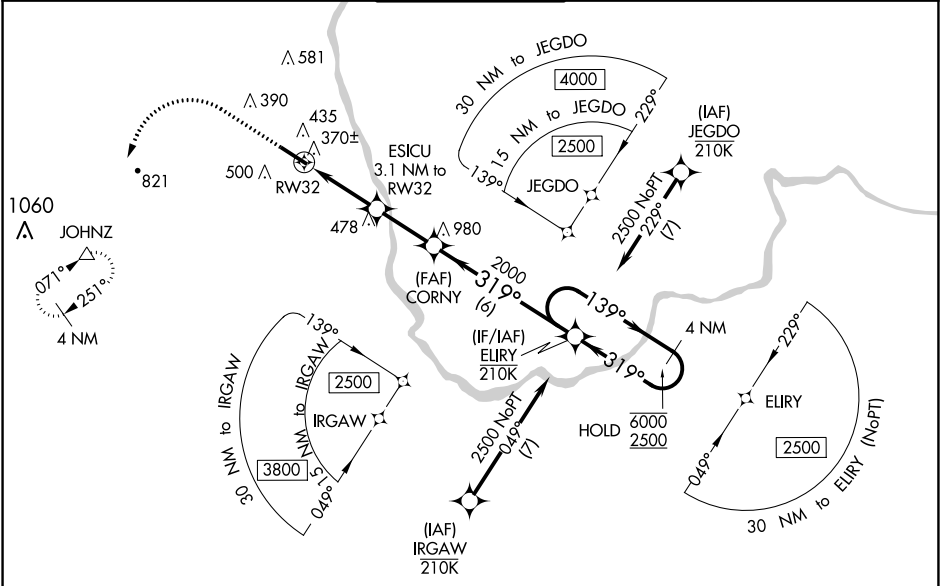
WAAS CH <b>73030</b> <b>W32A</b>	APP CRS <b>319°</b>	Rwy Idg TDZE Apt Elev	<b>5650</b> <b>193</b> <b>200</b>
--	------------------------	-----------------------------	---

# RNAV (GPS) RWY 32

BOIRE FLD (ASH)

RNP APCH.		MISSED APPROACH: Climb to 800 then climbing left turn to 4000 direct JOHNZ and hold, continue climb-in-hold to 4000.		
⚠ Rwy 32 helicopter visibility reduction below ¾ SM NA. ⚠ For uncompensated Baro-VNAV systems, LNAV/VNAV NA below -1.5°C or above 54°C.				

ATIS <b>125.1</b>	BOSTON APP CON <b>124.9 269,075</b>	NASHUA TOWER ★ <b>133.2 (CTAF) 0</b>	GND CON <b>121.8</b>	CLNC DEL <b>121.8</b>
----------------------	--	---	-------------------------	--------------------------



NE-1, 16 JUN 2022 to 14 JUL 2022

NE-1, 16 JUN 2022 to 14 JUL 2022

ELEV 200		D TDZE 193	
800	4000	JOHNZ * LNAV only.	
RW32 *1.2 NM to RW32 *1220 2000		ELIRY 4 NM Holding Pattern 139° → 6000 ← 319° 2500 GP 3.00° TCH 45	
1.2 NM   1.9 NM   2.4 NM   6 NM			
CATEGORY	A	B	D
LPV DA		477-7/8	284 (300-7/8)
LNAV/VNAV DA		633-1 1/4	440 (500-1 1/4)
LNAV MDA	620-1	427 (500-1)	620-1 1/4 427 (500-1 1/4)
CIRCLING	820-1 620 (700-1)	840-1 640 (700-1)	900-2 700 (700-2)   1000-2 1/2 800 (800-2 1/2)
HIRL Rwy 14-32 0		REIL Rwy 32 0	