

PIQUA, OHIO

AL-5022 (FAA)

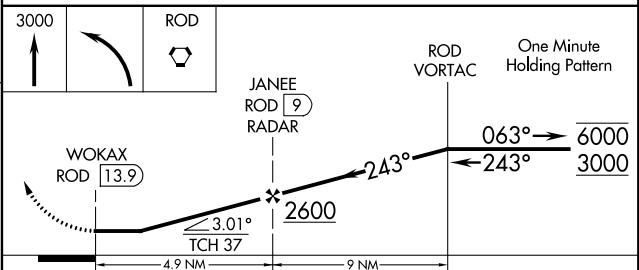
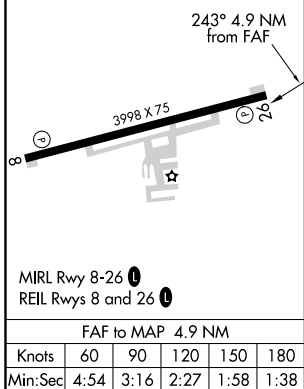
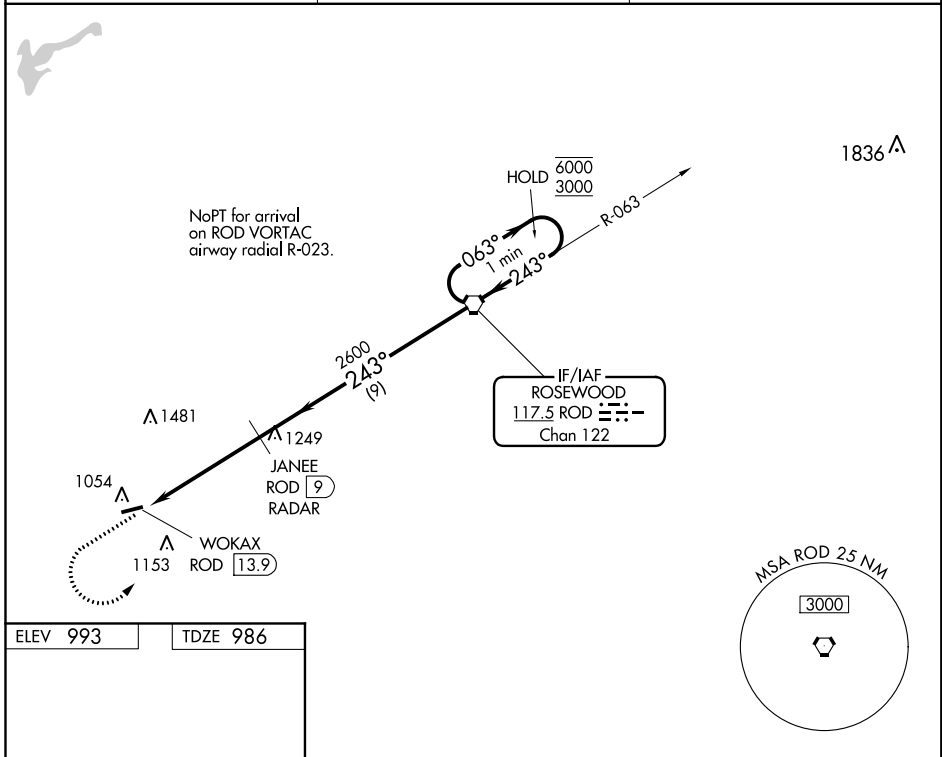
21336

VORTAC ROD 117.5 Chan 122	APP CRS 243°	Rwy Idg TDZE 986 Apt Elev 993
---	------------------------	---

VOR RWY 26

PIQUA/HARTZELL FLD (I17)

DME or RADAR required.		MISSED APPROACH: Climb to 3000 then left turn direct ROD VORTAC and hold.
<p>▼ Rwy 26 helicopter visibility reduction below 3/4 SM NA.</p> <p>▲ NA Use James M Cox Dayton Intl altimeter setting.</p>		
DAY ASOS 125.8	COLUMBUS APP CON 118.425 294.5 352.05	UNICOM 123.0 (CTAF) 0



CATEGORY	A	B	C	D
S-26	1500-1	514 (600-1)	1500-1 3/8	514 (600-1 3/8)
<input checked="" type="checkbox"/> CIRCLING	1500-1 507 (600-1)	1560-1 567 (600-1)	1560-1 1/2 567 (600-1 1/2)	1880-3 887 (900-3)

PIQUA, OHIO
Amdt 6E 20JUN19

40°10'N-84°19'W

PIQUA/HARTZELL FLD (I17)
VOR RWY 26

EC-2, 16 JUN 2022 to 14 JUL 2022

EC-2, 16 JUN 2022 to 14 JUL 2022