

APP CRS	Rwy Idg	3998
081°	TDZE	993
	Apt Elev	993

RNAV (GPS) RWY 8

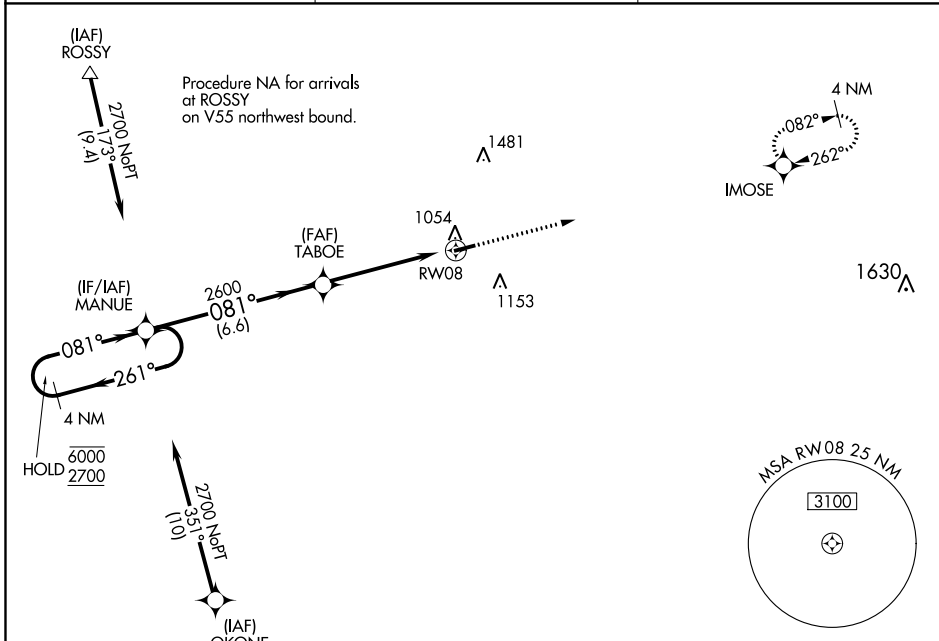
PIQUA/HARTZELL FLD (I17)

RNP APCH.

Use James M Cox Dayton Intl altimeter setting. Rwy 8 helicopter visibility reduction below 3/4 SM NA.

MISSED APPROACH: Climb to 2700 direct IMOSE and hold.

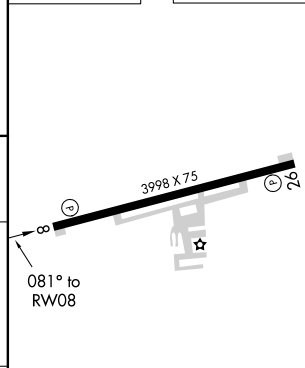
DAY ASOS 125.8	COLUMBUS APP CON 118.425 294.5 352.05	UNICOM 123.0 (CTAF)
--------------------------	---	-------------------------------



EC-2, 16 JUN 2022 to 14 JUL 2022

EC-2, 16 JUN 2022 to 14 JUL 2022

ELEV 993	TDZE 993
----------	----------



4 NM Holding Pattern	MANUE	TABOE	RWY 08
6000 ← 261°	→ 081°	2600	3.00° TCH 40
2700			
	6.6 NM	4.9 NM	

CATEGORY	A	B	C	D
LNVA MDA	1480-1	487 (500-1)	1480-1 3/8	487 (500-1 1/2)
CIRCLING	1480-1 487 (500-1)	1560-1 567 (600-1)	1560-1 1/2 567 (600-1 1/2)	1880-3 887 (900-3)

MIRL Rwy 8-26

REIL Rwy 8 and 26