

WAAS CH <b>82543</b> <b>W15A</b>	APP CRS <b>154°</b>	Rwy Idg TDZE Apt Elev	<b>5001</b> <b>1586</b> <b>1586</b>
--	------------------------	-----------------------------	---

# RNAV (GPS) RWY 15L

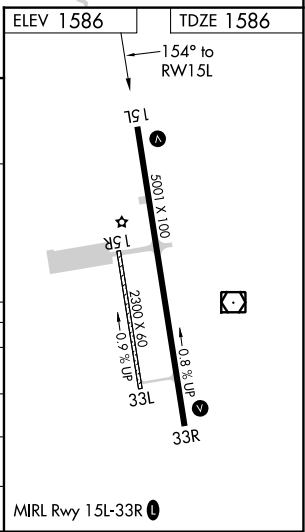
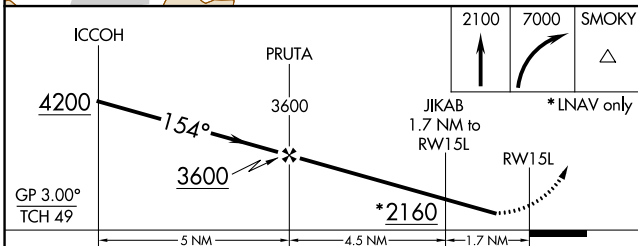
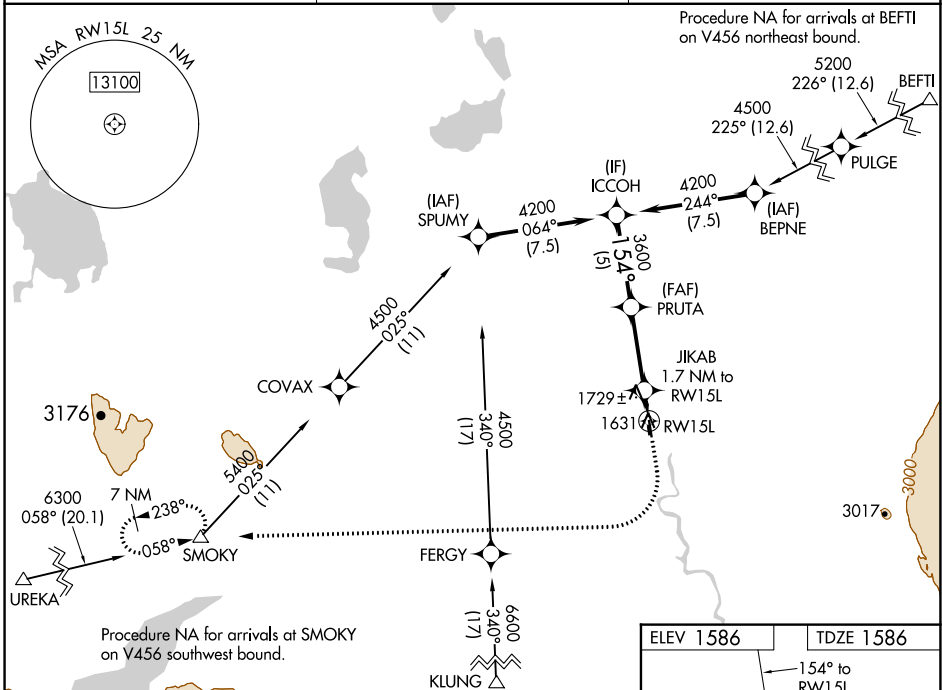
GULKANA (GKN) (PAGK)

RNP APCH.

**▼** Circling Rwy 15R, 33L NA at night. Rwy 15L helicopter visibility reduction below 3/4 SM NA. For uncompensated Baro-VNAV systems, LNAV/VNAV NA below -21°C or above 54°C.

MISSED APPROACH: Climb to 2100 then climbing right turn to 7000 direct SMOKY and hold, continue climb-in-hold to 7000.

ASOS <b>134.85</b>	ANCHORAGE CENTER <b>119.5 317.5</b>	CTAF <b>122.9</b>
-----------------------	--	----------------------



CATEGORY	A	B	C	D
LNAV/ VNAV DA	1836-1		250 (300-1)	
LPV DA	1877-1		291 (300-1)	
LNAV MDA	2040-1	454 (500-1)	2040-1 3/8	454 (500-1 3/8)
<b>C</b> CIRCLING	2040-1 454 (500-1)	2080-1 494 (500-1)	2080-1 1/2 494 (500-1 1/2)	2200-2 614 (700-2)

AK, 19 MAY 2022 to 14 JUL 2022

AK, 19 MAY 2022 to 14 JUL 2022