

WAAS CH 81822 W06A	APP CRS 055°	Rwy Idg TDZE Apt Elev	9002 57 66
--	------------------------	-----------------------------	---------------------------------------

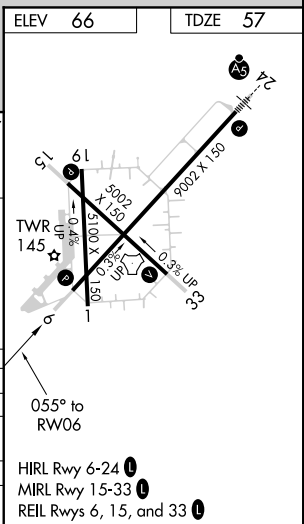
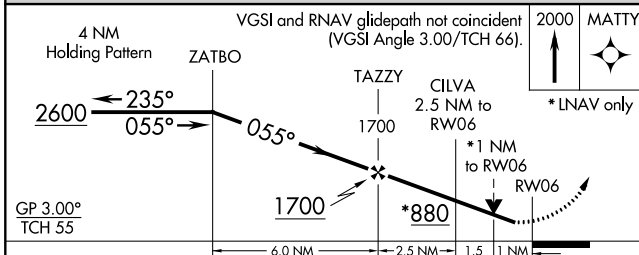
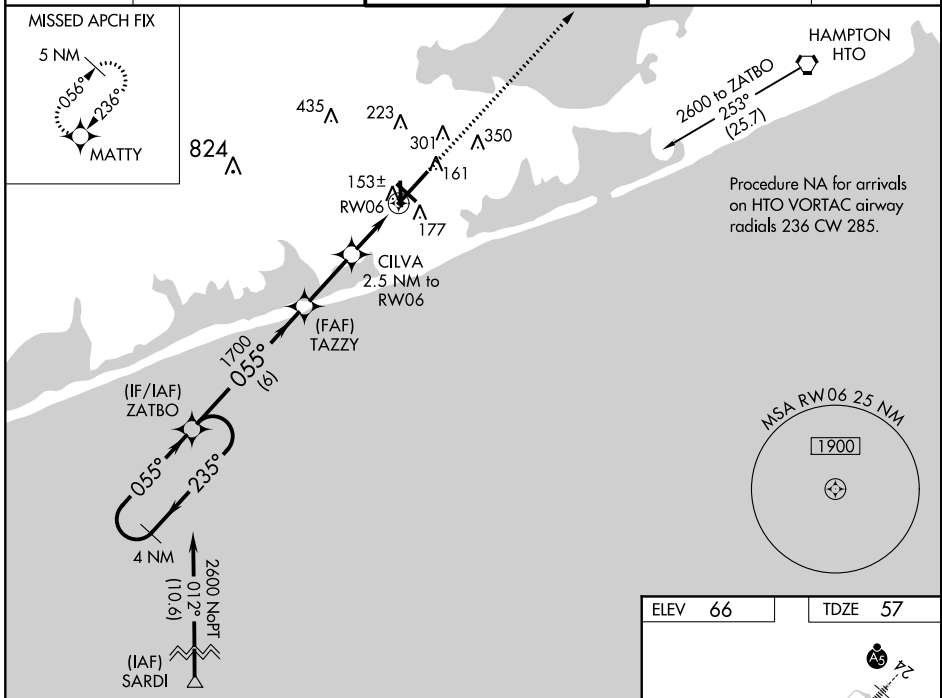
RNAV (GPS) RWY 6

FRANCIS S GABRESKI (FOK)

⚠ Helicopter visibility reduction below ¾ SM not authorized. For uncompensated Baro-VNAV systems, LNAV/VNAV NA below -15°C (5°F) or above 43°C (109°F). DME/DME RNP-0.3 NA. When local altimeter setting not received, use Shirley altimeter setting: increase LPV DA to 325 feet and all Cats visibility ½ SM; increase LNAV/VNAV DA to 361 feet and all Cats visibility ½ SM; increase all MDAs 40 feet and LNAV Cats C/D visibility ½ SM and Circling Cat C visibility ¼ SM. Baro-VNAV and VDP NA when using Shirley altimeter setting. Circling Rwy 15 NA at night.

MISSED APPROACH:
Climb to 2000 direct MATTY and hold.

ASOS 119.925	NEW YORK APP CON 125.975 343.65	SUFFOLK COUNTY TOWER ★ 125.3 (CTAF) 0 236.6	GND CON 121.8 225.4	UNICOM 122.95
------------------------	---	---	-------------------------------	-------------------------



CATEGORY	A	B	C	D
LPV DA		307-¾	250 (300-¾)	
LNAV/VNAV DA		343-⅞	286 (300-⅞)	
LNAV MDA		420-1	363 (400-1)	
CIRCLING	600-1 534 (600-1)	620-1 554 (600-1)	700-1¾ 634 (700-1¾)	740-2¼ 674 (700-2¼)

NE-2, 16 JUN 2022 to 14 JUL 2022

NE-2, 16 JUN 2022 to 14 JUL 2022

HIRL Rwy 6-24 **1**
MIRL Rwy 15-33 **1**
REIL Rwy 6, 15, and 33 **1**