

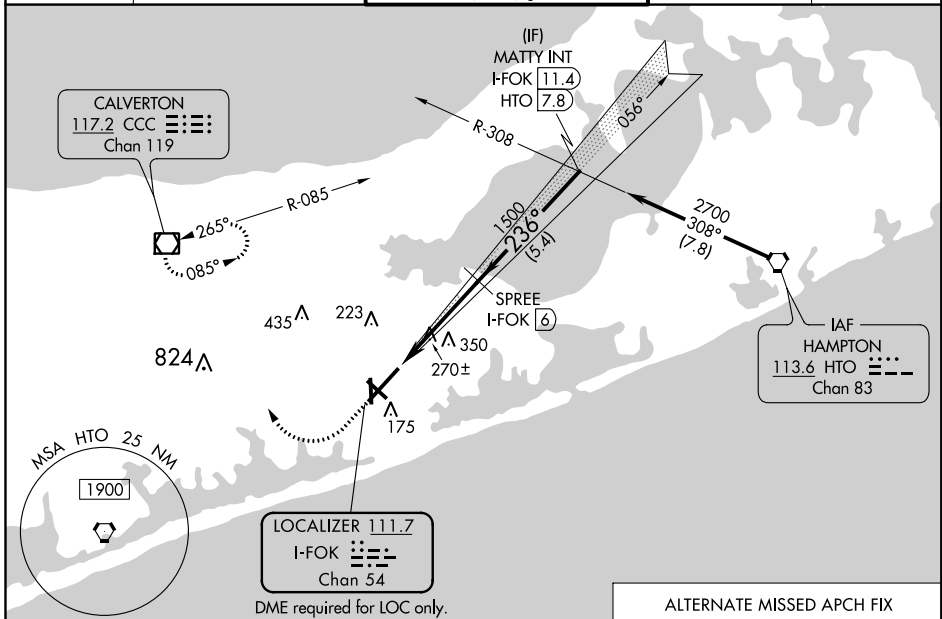
LOC/DME I-FOK <b>111.7</b> Chan <b>54</b>	APP CRS <b>236°</b>	Rwy Idg TDZE <b>66</b> Apt Elev <b>66</b>	<b>9002</b>
---	------------------------	--	-------------

# ILS or LOC RWY 24

FRANCIS S GABRESKI (FOK)

<p>Circling Rwy 15 NA at night.</p>	<p>MALS R</p>	<p>MISSED APPROACH: Climb to 880 then climbing right turn to 2000 direct CCC VOR/DME and hold.</p>		
		ASOS <b>119.925</b>	NEW YORK APP CON <b>125.975 343.65</b>	SUFFOLK COUNTY TOWER ★ <b>125.3 (CTAF) 236.6</b>

ASOS <b>119.925</b>	NEW YORK APP CON <b>125.975 343.65</b>	SUFFOLK COUNTY TOWER ★ <b>125.3 (CTAF) 236.6</b>	GND CON <b>121.8 225.4</b>	UNICOM <b>122.95</b>
------------------------	---	---	-------------------------------	-------------------------



ELEV 66	TDZE 66
236° 4.3 NM from FAF	

ALTERNATE MISSED APCH FIX

HIRL Rwy 6-24	MIRL Rwy 15-33	REL Rwy 6, 15, and 33			
FAF to MAP 4.3 NM					
Knots	60	90	120	150	180
Min:Sec	4:18	2:52	2:09	1:43	1:26

880 2000 CCC

VGSI and ILS glidepath not coincident (VGSI Angle 3.00/TCH 77).

MATTY INT I-FOK 11.4

SPREE I-FOK 6

I-FOK 1.7

I-FOK 2.9

1500

1500

236°

2700

GS 3.00° TCH 60

\*LOC only

\*I-FOK

1.2 NM 3.1 NM 5.4 NM

CATEGORY	A	B	C	D
S-ILS 24	266-½ 200 (200-½)			
S-LOC 24	520-½	454 (500-½)	520-¾	454 (500-¾)
CIRCLING	600-1 534 (600-1)	620-1 554 (600-1)	700-1¾ 634 (700-1¾)	740-2¼ 674 (700-2¼)

NE-2, 16 JUN 2022 to 14 JUL 2022

NE-2, 16 JUN 2022 to 14 JUL 2022