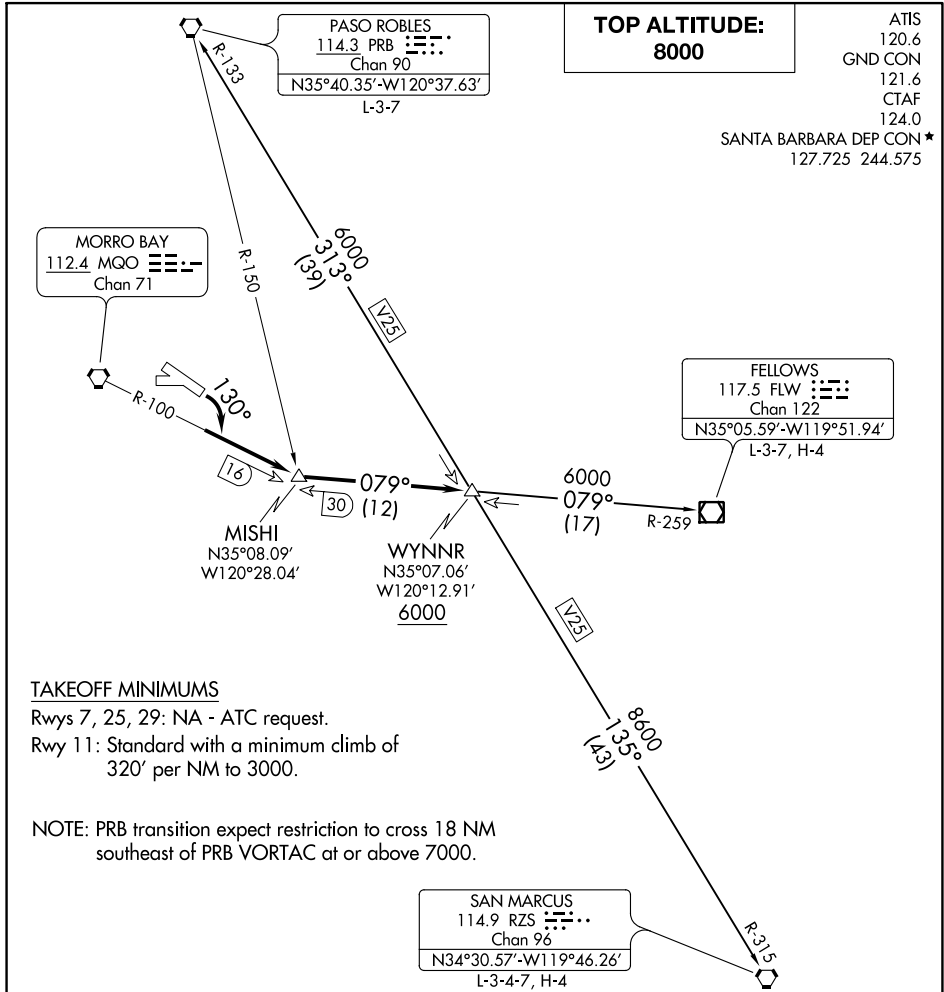


WYNNR FOUR DEPARTURE

AL-989 (FAA)

SAN LUIS COUNTY RGNL (SBP)

SAN LUIS OBISPO, CALIFORNIA



**TOP ALTITUDE:
8000**

ATIS 120.6
 GND CON 121.6
 CTAF 124.0
 SANTA BARBARA DEP CON ★ 127.725 244.575

TAKEOFF MINIMUMS

Rwy 7, 25, 29: NA - ATC request.
 Rwy 11: Standard with a minimum climb of 320' per NM to 3000.

NOTE: PRB transition expect restriction to cross 18 NM southeast of PRB VORTAC at or above 7000.

SAN MARCUS
 114.9 RZS
 Chan 96
 N34°30.57'-W119°46.26'
 L-3-4-7, H-4

DEPARTURE ROUTE DESCRIPTION

TAKEOFF RUNWAY 11: Turn right heading 130° to intercept and proceed on MQO R-100 to MISHI INT, then on FLW R-259 to WYNNR INT; thence on (transition) or (assigned route.)

FELLOWS TRANSITION (WYNNR4.FLW): From over WYNNR INT on FLW R-259 to FLW VOR/DME.

PASO ROBLES TRANSITION (WYNNR4.PRB): From over WYNNR INT on PRB R-133 to PRB VORTAC.

SAN MARCUS TRANSITION (WYNNR4.RZS): From over WYNNR INT on RZS R-315 to RZS VORTAC.

WYNNR FOUR DEPARTURE

SW-3, 16 JUN 2022 to 14 JUL 2022

SW-3, 16 JUN 2022 to 14 JUL 2022