


LOC I-SBP <b>109.7</b>	APP CRS <b>110°</b>	Rwy ldg TDZE Apt Elev	<b>5300</b> <b>198</b> <b>212</b>
---------------------------	------------------------	-----------------------------	---

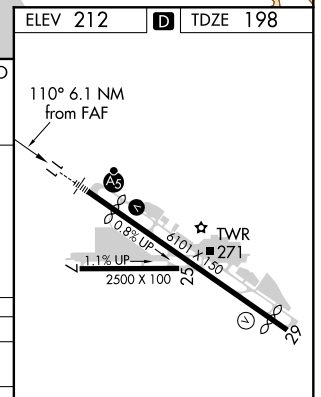
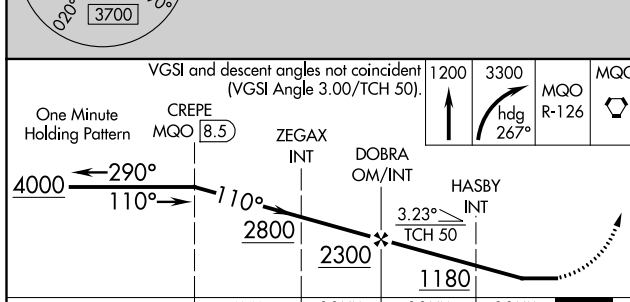
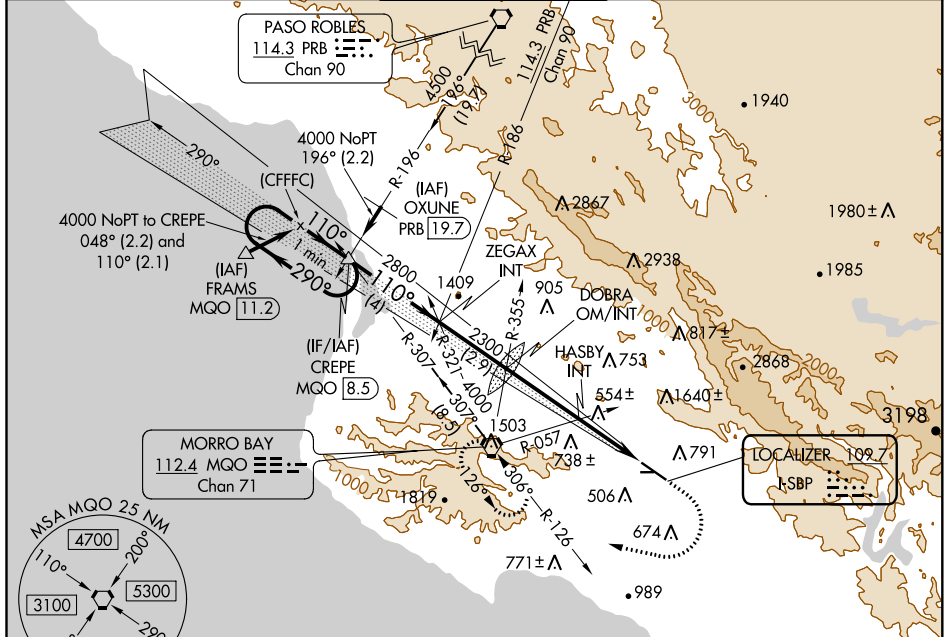
**LOC RWY 11**  
SAN LUIS COUNTY RGNL (SBP)

**⚠** Circling NA north of Rwy 11-29.


**MALS** 


**MISSED APPROACH:** Climb to 1200 then climbing right turn to 3300 on heading 267° and on MQO VORTAC R-126 to MQO VORTAC and hold.

<b>ATIS</b> <b>120.6</b>	<b>SANTA BARBARA APP CON*</b> <b>127.725 244.575</b>	<b>SAN LUIS TOWER*</b> <b>124.0 (CTAF) 379.9</b>	<b>GND CON</b> <b>121.6</b>	<b>UNICOM</b> <b>122.95</b>
-----------------------------	---	---	--------------------------------	--------------------------------



CATEGORY	A	B	C	D
S-11	1180-3/4 982 (1000-3/4)	1180-1 982 (1000-1)	1180-2 1/2	982 (1000-2 1/2)
CIRCLING	1180-1 1/4 968 (1000-1 1/4)	1220-1 1/2 1008 (1100-1 1/2)	1460-3 1248 (1300-3)	1560-3 1348 (1400-3)
HASBY INT MINIMUMS (DUAL VOR RECEIVERS REQUIRED)				
S-11	760-1/2	562 (600-1/2)	760-1 1/4	562 (600-1 1/4)
CIRCLING	840-1 628 (700-1)	1220-1 1/2 1008 (1100-1 1/2)	1460-3 1248 (1300-3)	1560-3 1348 (1400-3)

REIL Rwy 29 

HIRL Rwy 11-29 

FAF to MAP 6.1 NM

Knots	60	90	120	150	180
Min:Sec	6:06	4:04	3:03	2:26	2:02

SW-3, 16 JUN 2022 to 14 JUL 2022

SW-3, 16 JUN 2022 to 14 JUL 2022