

LOC/DME I-MVP <b>111.55</b> Chan 52 (Y)	APP CRS <b>196°</b>	Rwy Idg TDZE Apt Elev	<b>7302</b> <b>1320</b> <b>1333</b>
---	------------------------	-----------------------------	---

# ILS or LOC RWY 19L

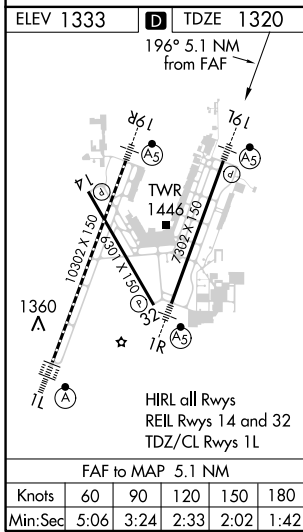
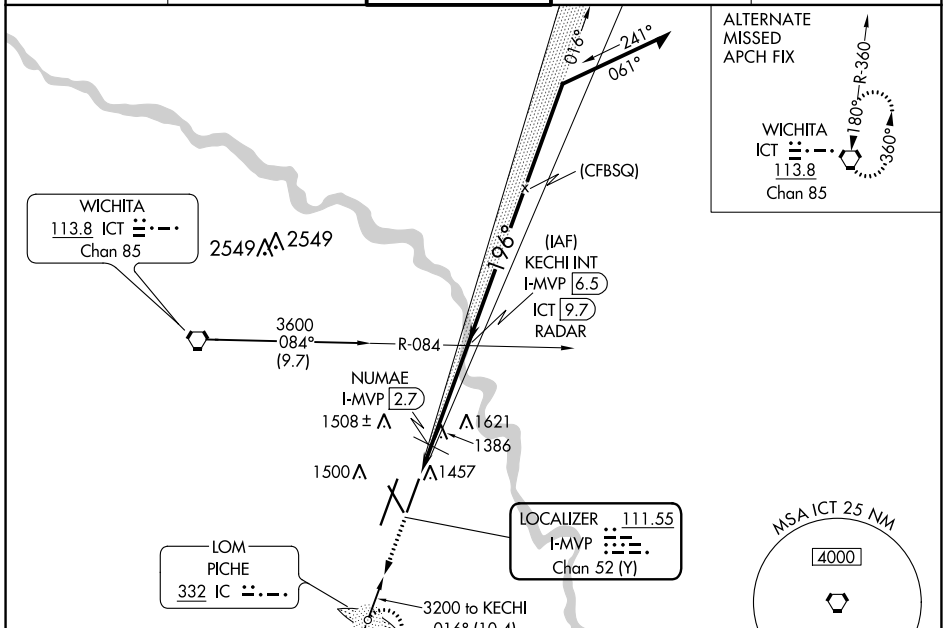
WICHITA DWIGHT D EISENHOWER NTL (ICT)

**⚠** ADF required. Simultaneous approach authorized with ILS or LOC RWY 19R. For inoperative MALSRL, increase S-ILS 19L Cat E visibility to 3/4 mile, S-LOC 19L Cat E visibility to 1 1/8 mile, NUMAE fix minimums: S-LOC 19L Cat C/D/E visibility to 1 mile.

**MALSRL**

**MISSED APPROACH:** Climb to 3000 direct PICHE LOM and hold.

ATIS <b>125.15</b>	WICHITA APP CON <b>126.7 353.5</b>	WICHITA TOWER <b>118.2 257.8</b>	GND CON <b>121.9 348.6</b>	CLNC DEL <b>125.7</b>
-----------------------	---------------------------------------	-------------------------------------	-------------------------------	--------------------------



ELEV 1333	<b>D</b>	TDZE 1320				
196° 5.1 NM from FAF						
3000	IC	KECHI INT I-MVP 6.5 / RADAR	Remain within 15 NM			
*LOC only.	I-MVP 1.4	NUMAE I-MVP 2.7	3000	016°	3200	
			1780*	196°	3000	
			1.3 NM	3.8 NM		
CATEGORY	A	B	C	D	E	
S-ILS 19L	1520-1/2 200 (200-1/2)					
S-LOC 19L	1780-1/2 460 (500-1/2)		1780-7/8 460 (500-7/8)			
<b>C</b> CIRCLING	1800-1 467 (500-1)	1980-1 3/4 647 (700-1 3/4)	1980-2 647 (700-2)	2000-2 1/4 667 (700-2 1/4)	2000-2 1/4 667 (700-2 1/4)	
NUMAE FIX MINIMUMS (DME REQUIRED)						
S-LOC 19L	1700-1/2 380 (400-1/2)		1700-5/8 380 (400-5/8)			
<b>C</b> CIRCLING	1800-1 467 (500-1)	1980-1 3/4 647 (700-1 3/4)	1980-2 647 (700-2)	2000-2 1/4 667 (700-2 1/4)	2000-2 1/4 667 (700-2 1/4)	

NC-2, 16 JUN 2022 to 14 JUL 2022

NC-2, 16 JUN 2022 to 14 JUL 2022