

WAAS CH <b>69610</b> <b>W03A</b>	APP CRS <b>030°</b>	Rwy Idg TDZE Apt Elev	<b>5204</b> <b>700</b> <b>708</b>
--	------------------------	-----------------------------	---

# RNAV (GPS) RWY 3

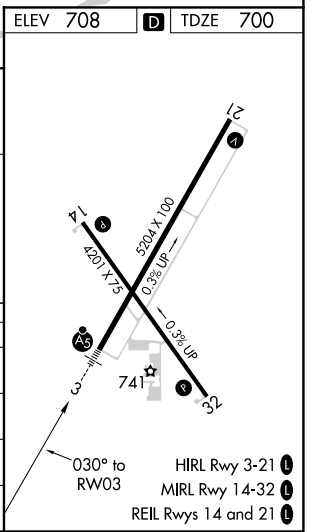
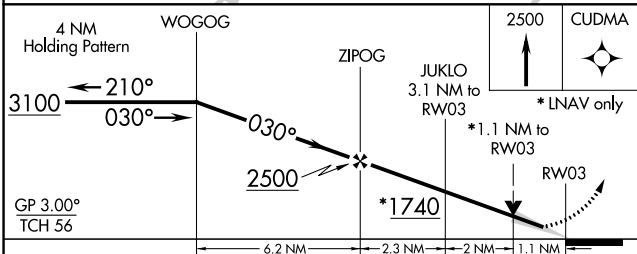
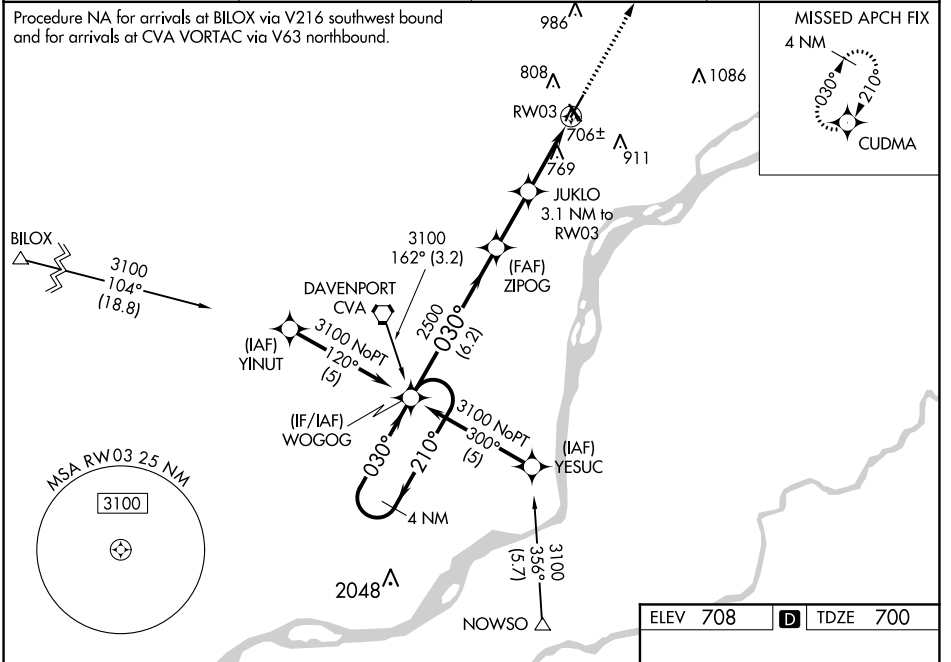
CLINTON MUNI (CWI)

**▼** For uncompensated Baro-VNAV systems, LNAV/VNAV NA below -16°C (4°F) or above 54°C (130°F). DME/DME RNP-0.3 NA.  
**▲** Baro-VNAV and VDP NA when using Davenport altimeter setting.  
**☼** -35°C/-31°F When local altimeter setting not received, use Davenport altimeter setting and increase all DA 47 feet and all MDA 60 feet.

MALSR **A5**

MISSED APPROACH: Climb to 2500 direct CUDMA and hold.

AWOS-3PT <b>125.525</b>	QUAD CITY APP CON * <b>125.95 257.8</b>	CLNC DEL <b>118.5</b>	UNICOM <b>122.8</b> (CTAF)
----------------------------	--	--------------------------	-------------------------------



CATEGORY	A	B	C	D
LPV DA	900-½	200 (200-½)		NA
LNAV/VNAV DA	1039-¾	339 (400-¾)		NA
LNAV MDA	1020-½	320 (400-½)		NA
<b>C</b> CIRCLING	1140-1 432 (500-1)	1240-1 532 (600-1)	1240-1½ 532 (600-1½)	NA

NC-3, 16 JUN 2022 to 14 JUL 2022

NC-3, 16 JUN 2022 to 14 JUL 2022