

WAAS CH 61099 W36A	APP CRS 356°	Rwy Idg 5602 TDZE 1307 Apt Elev 1324
--	------------------------	---

RNAV (GPS) RWY 36

BEATRICE MUNI (BIE)

⚠ Inoperative table does not apply to LPV all Cats. For uncompensated Baro-VNAV systems, LNAV/VNAV NA below -22°C (-7°F) or above 54°C (130°F). For inoperative MALSR, increase LNAV/VNAV all Cats visibility to 7/8 mile and LNAV Cat A/B visibility to 1. DME/DME RNP-0.3 NA.

MALSR

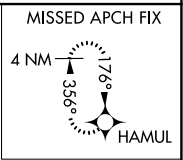
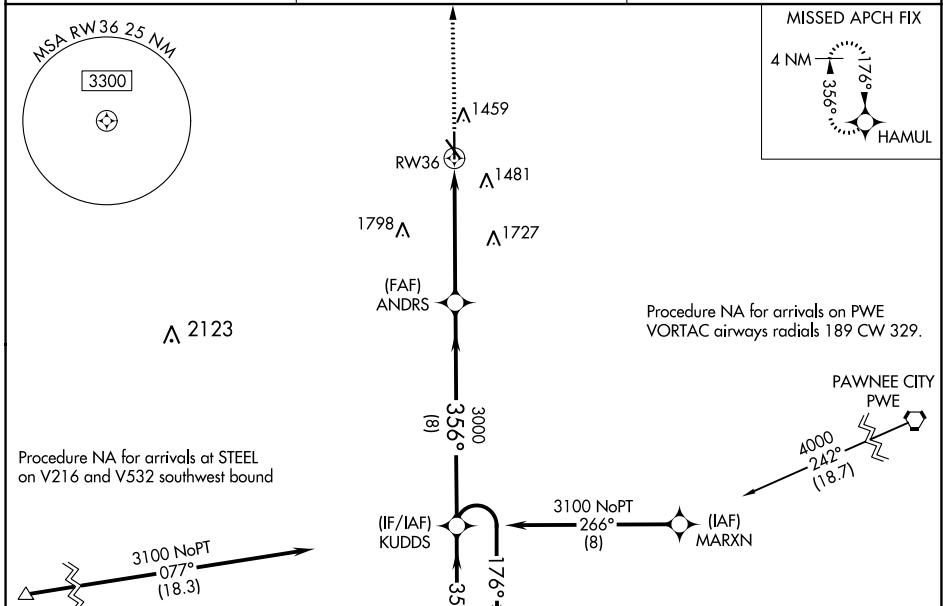


MISSED APPROACH: Climb to 3900 direct HAMUL and hold.

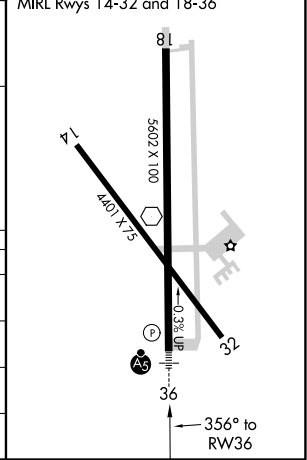
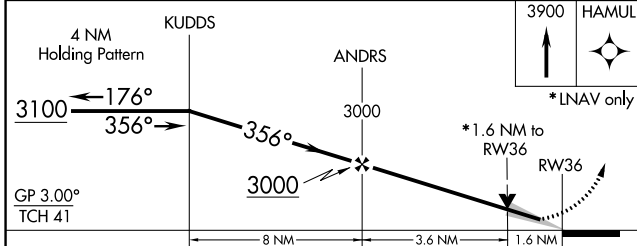
AWOS-3
125.325

MINNEAPOLIS CENTER
126.4 317.7

UNICOM
122.8 (CTAF)



ELEV 1324	D TDZE 1307
REIL Rwy 14 and 32	
MIRL Rwy 14-32 and 18-36	



CATEGORY	A	B	C	D
LPV DA		1507-3/4	200 (200-3/4)	
LNAV/VNAV DA		1559-3/4	252 (300-3/4)	
LNAV MDA	1840-3/4	533 (600-3/4)	1840-1	533 (600-1)
C CIRCLING	1840-1	516 (600-1)	2000-2 676 (700-2)	2100-2 1/2 776 (800-2 1/2)

NC-2, 16 JUN 2022 to 14 JUL 2022

NC-2, 16 JUN 2022 to 14 JUL 2022