

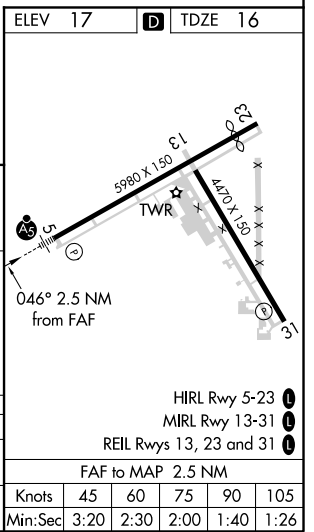
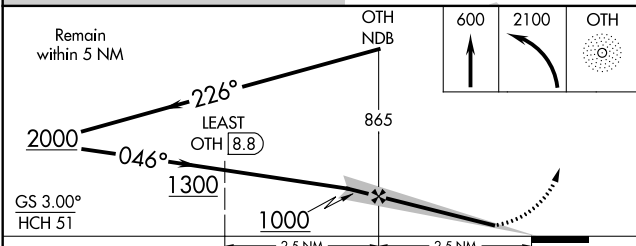
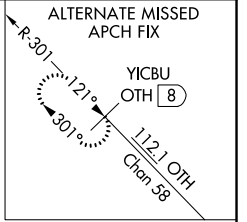
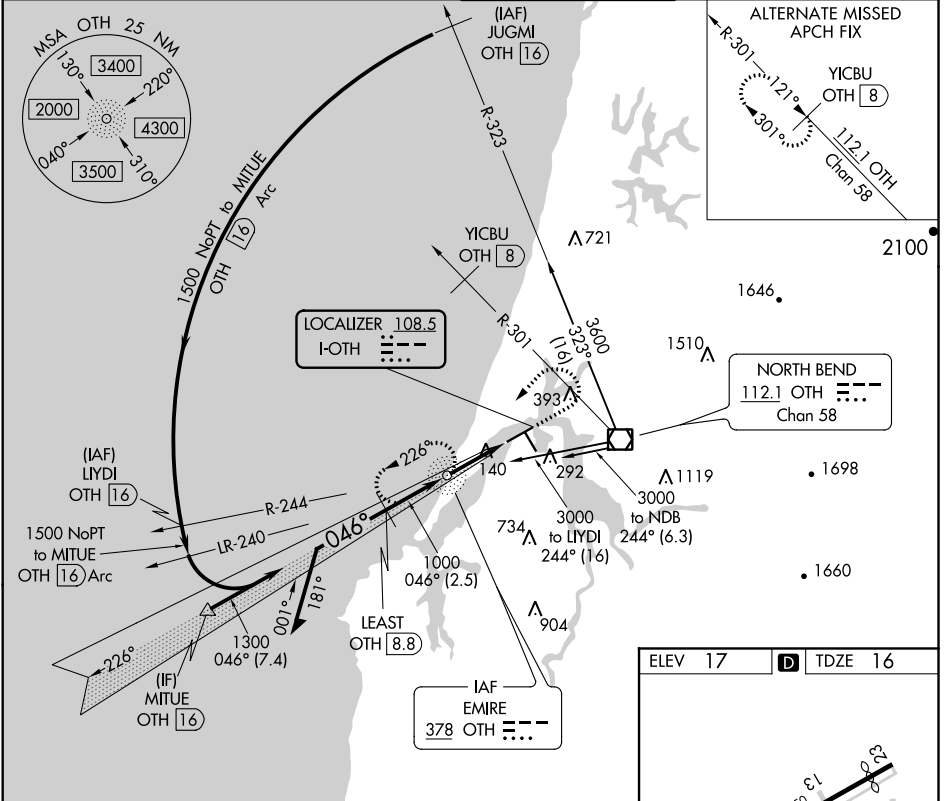
LOC I-OTH <b>108.5</b>	APP CRS <b>046°</b>	Rwy Idg <b>5320</b>
		TDZE <b>16</b>
		Apt Elev <b>17</b>

# COPTER ILS or LOC RWY 5

SOUTHWEST OREGON RGNL (OTH)

ADF and DME required.	MALSR 	MISSED APPROACH: Climb to 600 then climbing left turn to 2100 direct OTH NDB and hold, continue climb-in-hold to 2100.
-----------------------	-----------	--

AWOS-3PT <b>135.075</b>	SEATTLE CENTER <b>127.55 254.35</b>	NORTH BEND TOWER* <b>118.45 (CTAF) 0</b>	GND CON <b>127.1</b>
----------------------------	--	---	-------------------------



NW-1, 16 JUN 2022 to 14 JUL 2022

NW-1, 16 JUN 2022 to 14 JUL 2022