

| | | |
|--|------------------------|---|
| WAAS CH 53302 W04A | APP CRS 042° | Rwy Idg 5997 TDZE 3374 Apt Elev 3374 |
|--|------------------------|---|

RNAV (GPS) RWY 4

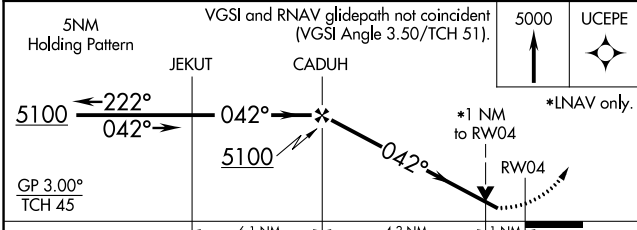
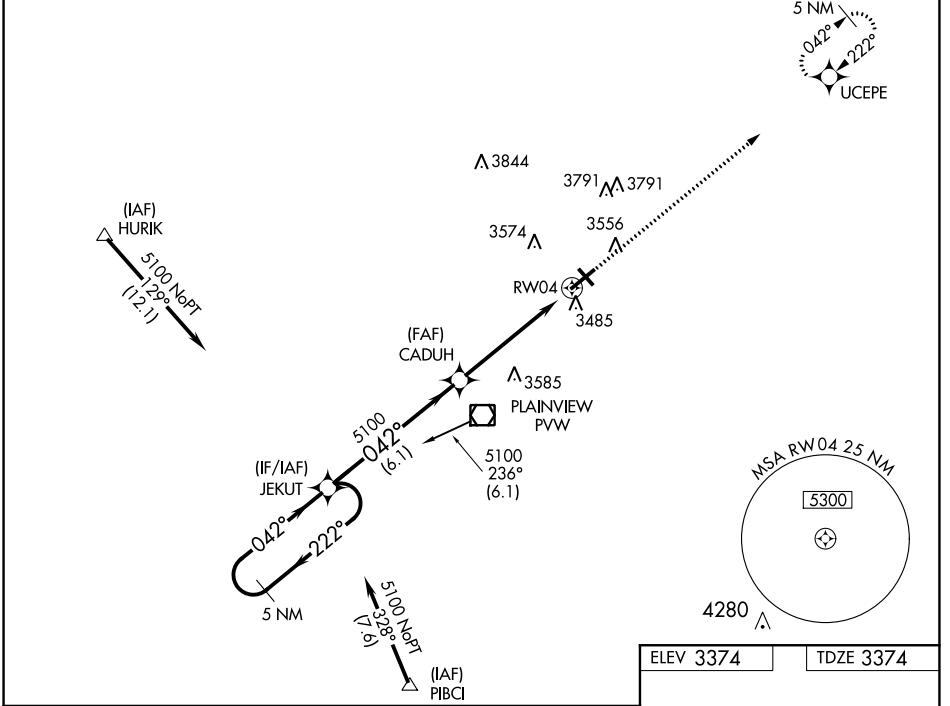
HALE COUNTY (PVW)

RNP APCH.

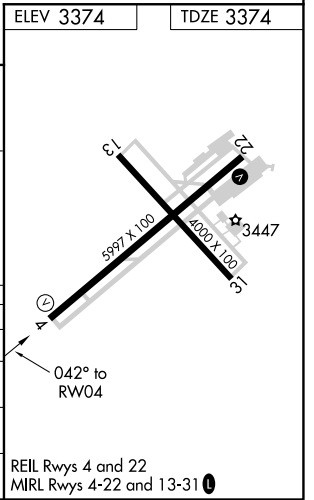
⚠ For uncompensated Baro-VNAV systems, LNAV/VNAV NA below -21°C or above 42°C. VDP and Baro-VNAV NA when using Lubbock altimeter setting. Rwy 4 helicopter visibility reduction below 3/4 SM NA. When local altimeter setting not received, use Lubbock altimeter setting; increase all DA 83 feet and increase all LPV and LNAV/VNAV visibility 1/2 SM, increase all MDA 100 feet and LNAV Cat C/D visibility 1/4 SM and Circling Cat C/D visibility 1/2 SM.

MISSED APPROACH: Climb to 5000, direct UCEPE and hold.

| | | | |
|--------------------------|---------------------------------------|--------------------------|---------------------------------|
| AWOS-3 119.675 | LUBBOCK APP CON 119.2 351.8 | CLNC DEL 121.7 | UNICOM 123.0 (CTAF) 0 |
|--------------------------|---------------------------------------|--------------------------|---------------------------------|



| CATEGORY | A | B | C | D |
|--------------|------------|-----------------|-------------------------------|-------------------------------|
| LPV DA | | 3624-1 | 250 (300-1) | |
| LNAV/VNAV DA | | 3730-1 1/4 | 356 (400-1 1/4) | |
| LNAV MDA | 3800-1 | 426 (500-1) | 3800-1 1/4 | 426 (500-1 1/4) |
| CIRCLING | 3940-1 1/4 | 566 (600-1 1/4) | 4160-2 1/4 786 (800-2 1/4) | 4160-2 1/2 786 (800-2 1/2) |



SC-2, 16 JUN 2022 to 14 JUL 2022

SC-2, 16 JUN 2022 to 14 JUL 2022