

MARYSVILLE, CALIFORNIA

ILS or LOC Y RWY 15

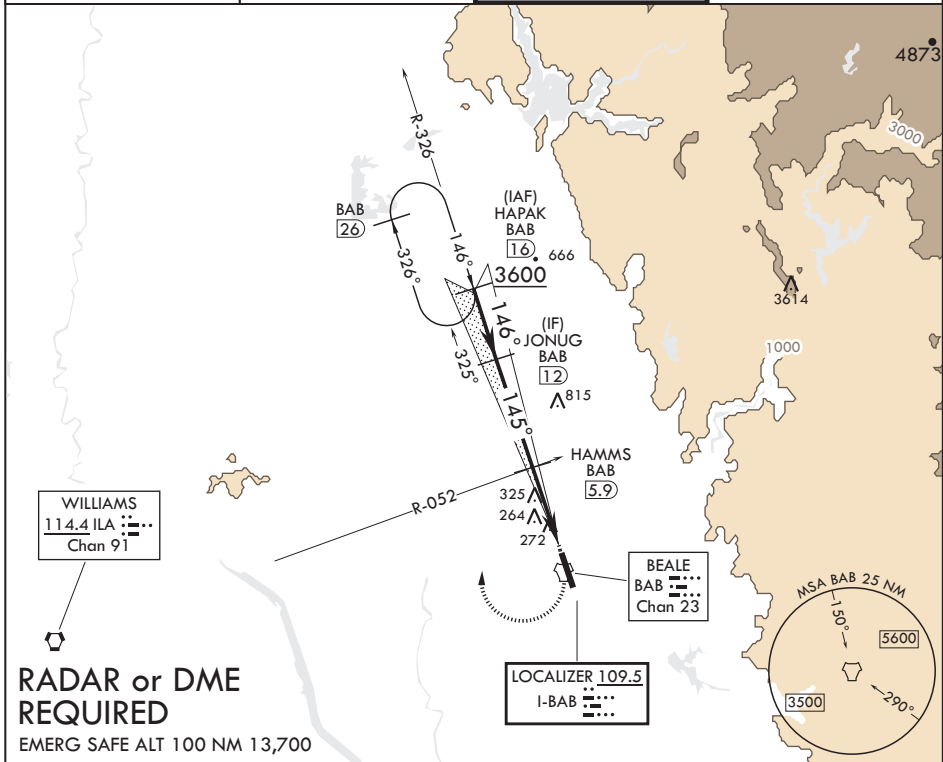
LOC I-BAB 109.5	APCH CRS 145°	Rwy ldg 12,001	TDZE 113	Arpt Elev 113
---------------------------	-------------------------	-------------------	-------------	------------------

AL-771 (USAF)

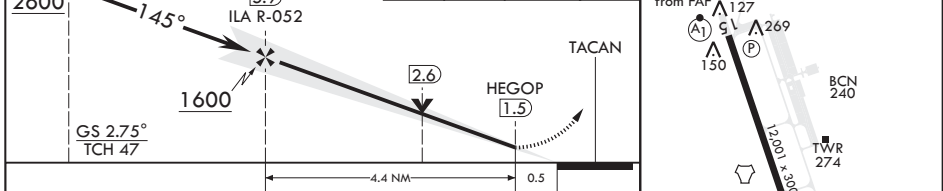
BEALE AFB (KBAB)

ALSF-1 MISSED APPROACH: Climb to 4400 direct BAB TACAN. Turn right to intercept BAB R-326 to HAPAK and hold, continue climb in hold to 4400.

ATIS* 124.55 273.5	NORCAL APP CON 125.4 259.1	TOWER* 119.4 284.75	GND CON 121.6 257.75
------------------------------	--------------------------------------	-------------------------------	--------------------------------



JONUG 12	VGSI and glideslope not coincident.	4400	BAB	HAPAK 16	ELEV 113	TDZE 113
----------	-------------------------------------	------	-----	----------	----------	----------



CATEGORY	A	B	C	D	E
S-ILS 15*	313/24		200	(200-½)	
S-LOC 15**	620/24	507 (600-½)	620/55	507	(600-1)
C CIRCLING***	620-1	507 (600-1)	620-1½ 507 (600-1½)	680-2 567 (600-2)	840-2½ (800-2½)

HIRL all Rwys

MARYSVILLE, CALIFORNIA

39°08'N - 121°26'W

BEALE AFB (KBAB)

Amdt 5 20JUL17

ILS or LOC Y RWY 15

SW-2, 16 JUN 2022 to 14 JUL 2022

SW-2, 16 JUN 2022 to 14 JUL 2022