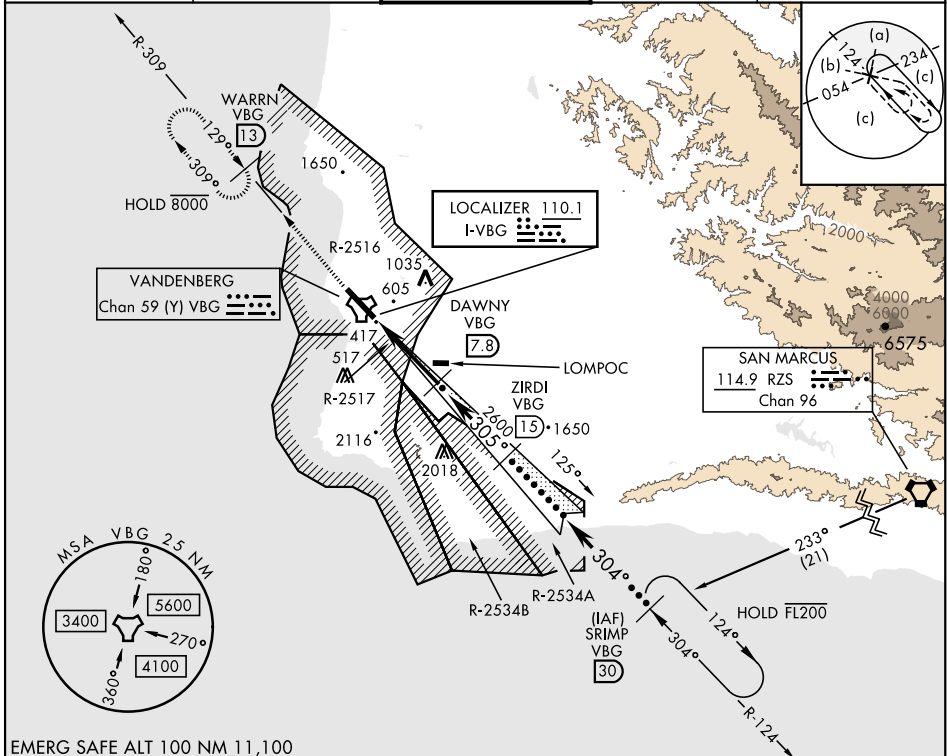


HI-ILS or LOC/DME RWY 30

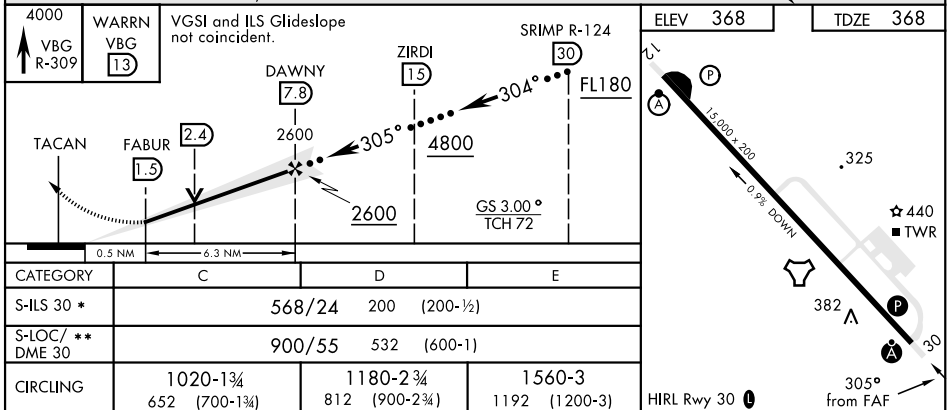
LOC I-VBG 110.1	APCH CRS 305°	Rwy Idg 15,000 TDZE 368 Arpt Elev 368	AL-770 [USSF]	VANDENBERG SFB (KVBG)
---------------------------	-------------------------	--	---------------	-----------------------

DME required.	ALSF-2	MISSED APPROACH: Climb out VBG TACAN R-309 to WARRN and hold. Continue climb in hold maintain 4000.
<p>▼ * When ALS inop, increase CAT CDE RVR to 40 and vis to 3/4 mile.</p> <p>** When ALS inop, increase CAT CDE vis to 1 1/2 miles.</p>		

ATIS 133.125 257.975	SANTA BARBARA APP/DEP CON 124.15 327.8	TOWER★ 124.95 (CTAF) 326.2	GND CON 121.75 275.8	CLNC DEL 121.75 275.8
--------------------------------	--	---	--------------------------------	---------------------------------



EMERG SAFE ALT 100 NM 11,100



HI-ILS or LOC/DME RWY 30

SW-3, 16 JUN 2022 to 14 JUL 2022

SW-3, 16 JUN 2022 to 14 JUL 2022