

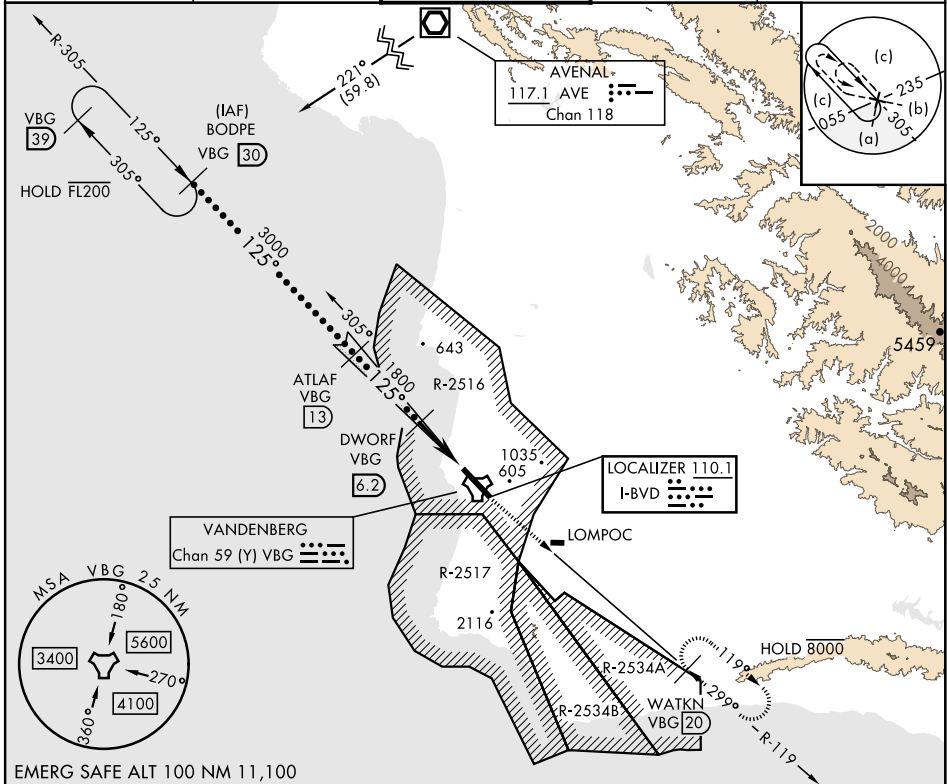
HI-ILS or LOC/DME RWY 12

LOC I-BVD 110.1	APCH CRS 125°	Rwy Idg 15,000 TDZE 265 Arprt Elev 368	AL-770 [USSF]	VANDENBERG SFB (KVBG)
---------------------------	-------------------------	---	---------------	-----------------------

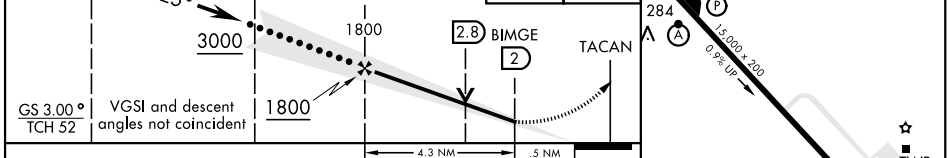
DME required. **ALSIF-2** MISSED APPROACH: Climb out VBG TACAN R-119 until 20 DME (WATKN) and hold. Continue climb in hold maintain 7000.

▽ * When ALS inop, increase RVR to 40 and vis to 3/4 mile.
** When ALS inop, increase CAT CDE vis to 1 1/4 mile.

ATIS 133.125 257.975	SANTA BARBARA APP/DEP CON 124.15 327.8	TOWER ★ 124.95 0 (CTAF) 326.2	GND CON 121.75 275.8	CLNC DEL 121.75 275.8
--------------------------------	---	--	--------------------------------	---------------------------------



BODPE R-305 30 FL180	ATLAF 13	DWORF 6.2	7000 VBG R-119	WATKN VBG 20	ELEV 368	TDZE 265
--------------------------------	-----------------	------------------	----------------	---------------------	-----------------	-----------------



CATEGORY	C	D	E
S-ILS 12 *	465/24	200 (100-1/2)	
S-LOC/DME 12 **	700/40	435 (400-3/4)	
CIRCLING	1020-1 3/4 652 (700-1 3/4)	1180-2 3/4 812 (900-2 3/4)	1560-3 1192 (1200-3)

HI-ILS or LOC/DME RWY 12

SW-3, 16 JUN 2022 to 14 JUL 2022

SW-3, 16 JUN 2022 to 14 JUL 2022