

APP CRS <b>306°</b>	Rwy Idg <b>7959</b>
	TDZE <b>591</b>
	Apt Elev <b>597</b>

# RNAV (RNP) Z RWY 30

GARY/CHICAGO INTL (GYY)

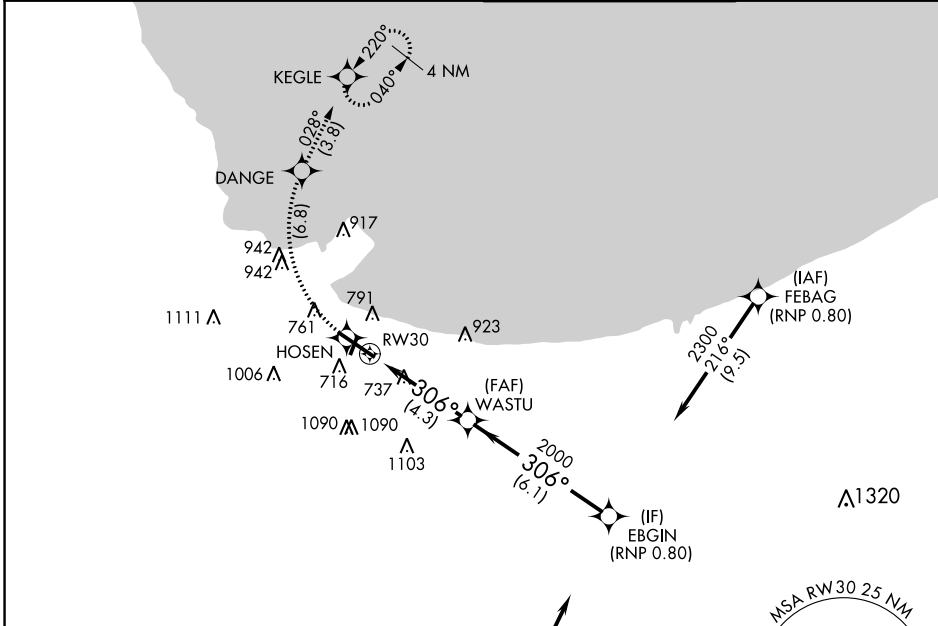
RNP AR APCH - GPS.

▼ For uncompensated Baro-VNAV systems, procedure NA below -1.6°C or above 54°C. Missed approach requires RNP less than 1.0. For inop ALS, increase RNP 0.30 all Cats visibility to 1½ SM.

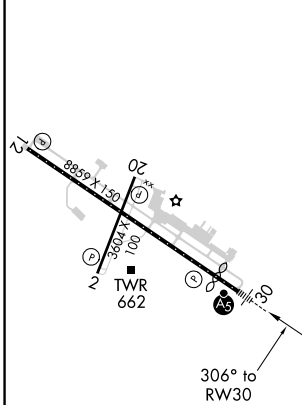
MALSR  
AS

MISSED APPROACH: Climb to 2100 on track 306° to HOSEN, right turn to DANGE, then track 028° to KEGLE and hold.

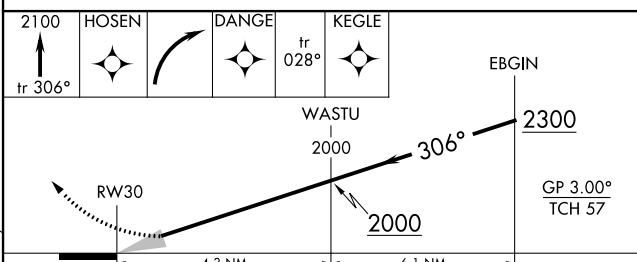
ATIS <b>134.575</b>	CHICAGO APP CON <b>133.1 285.6</b>	GARY TOWER ★ <b>125.6 (CTAF) 0</b>	GND CON <b>121.9</b>
------------------------	---------------------------------------	---------------------------------------	-------------------------



ELEV 597	D	TDZE 591
----------	---	----------



REIL Rws 1, 2 and 20  
HIRL Rwy 12-30  
MIRL Rwy 2-20



CATEGORY	A	B	C	D
RNP 0.13 DA		976/35	385 (400-½)	
RNP 0.30 DA		1098/55	507 (600-1)	

**AUTHORIZATION REQUIRED**

EC-2, 16 JUN 2022 to 14 JUL 2022

EC-2, 16 JUN 2022 to 14 JUL 2022