

BHHIA TWO ARRIVAL (RNAV) Transition Routes

FORT LAUDERDALE, FLORIDA

MIAMI APP CON
120.5 350.225
FLL D-ATIS
135.0
FXE ATIS
119.85
OPF ATIS
125.9
PMP ATIS
120.55

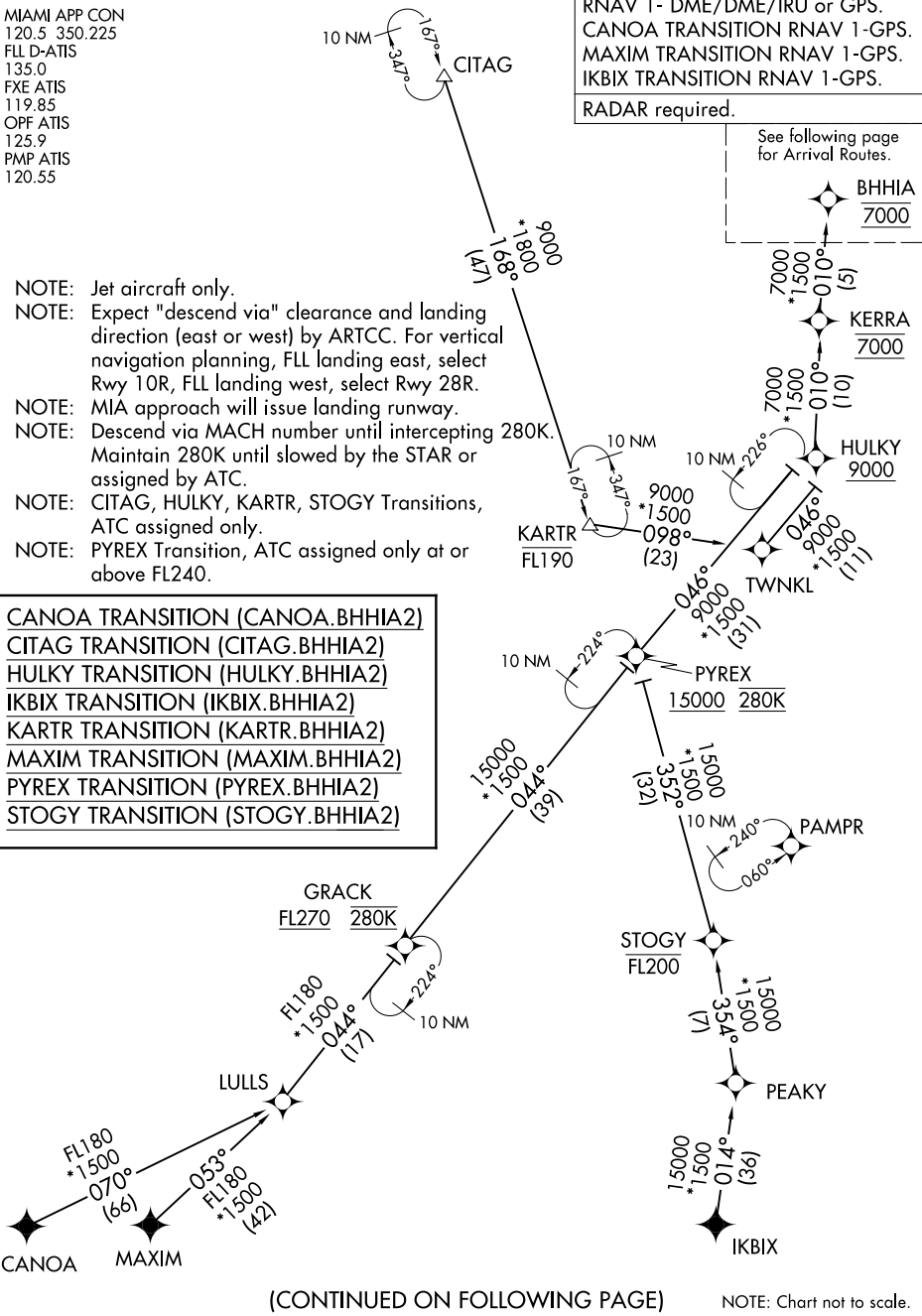
RNAV 1- DME/DME/IRU or GPS.
CANOA TRANSITION RNAV 1-GPS.
MAXIM TRANSITION RNAV 1-GPS.
IKBIX TRANSITION RNAV 1-GPS.

RADAR required.

See following page
for Arrival Routes.

- NOTE: Jet aircraft only.
- NOTE: Expect "descend via" clearance and landing direction (east or west) by ARTCC. For vertical navigation planning, FLL landing east, select Rwy 10R, FLL landing west, select Rwy 28R.
- NOTE: MIA approach will issue landing runway.
- NOTE: Descend via MACH number until intercepting 280K. Maintain 280K until slowed by the STAR or assigned by ATC.
- NOTE: CITAG, HULKY, KARTR, STOGY Transitions, ATC assigned only.
- NOTE: PYREX Transition, ATC assigned only at or above FL240.

- CANOA TRANSITION (CANOA.BHHIA2)
- CITAG TRANSITION (CITAG.BHHIA2)
- HULKY TRANSITION (HULKY.BHHIA2)
- IKBIX TRANSITION (IKBIX.BHHIA2)
- KARTR TRANSITION (KARTR.BHHIA2)
- MAXIM TRANSITION (MAXIM.BHHIA2)
- PYREX TRANSITION (PYREX.BHHIA2)
- STOGY TRANSITION (STOGY.BHHIA2)



(CONTINUED ON FOLLOWING PAGE)

NOTE: Chart not to scale.

SE-3, 16 JUN 2022 to 14 JUL 2022

SE-3, 16 JUN 2022 to 14 JUL 2022